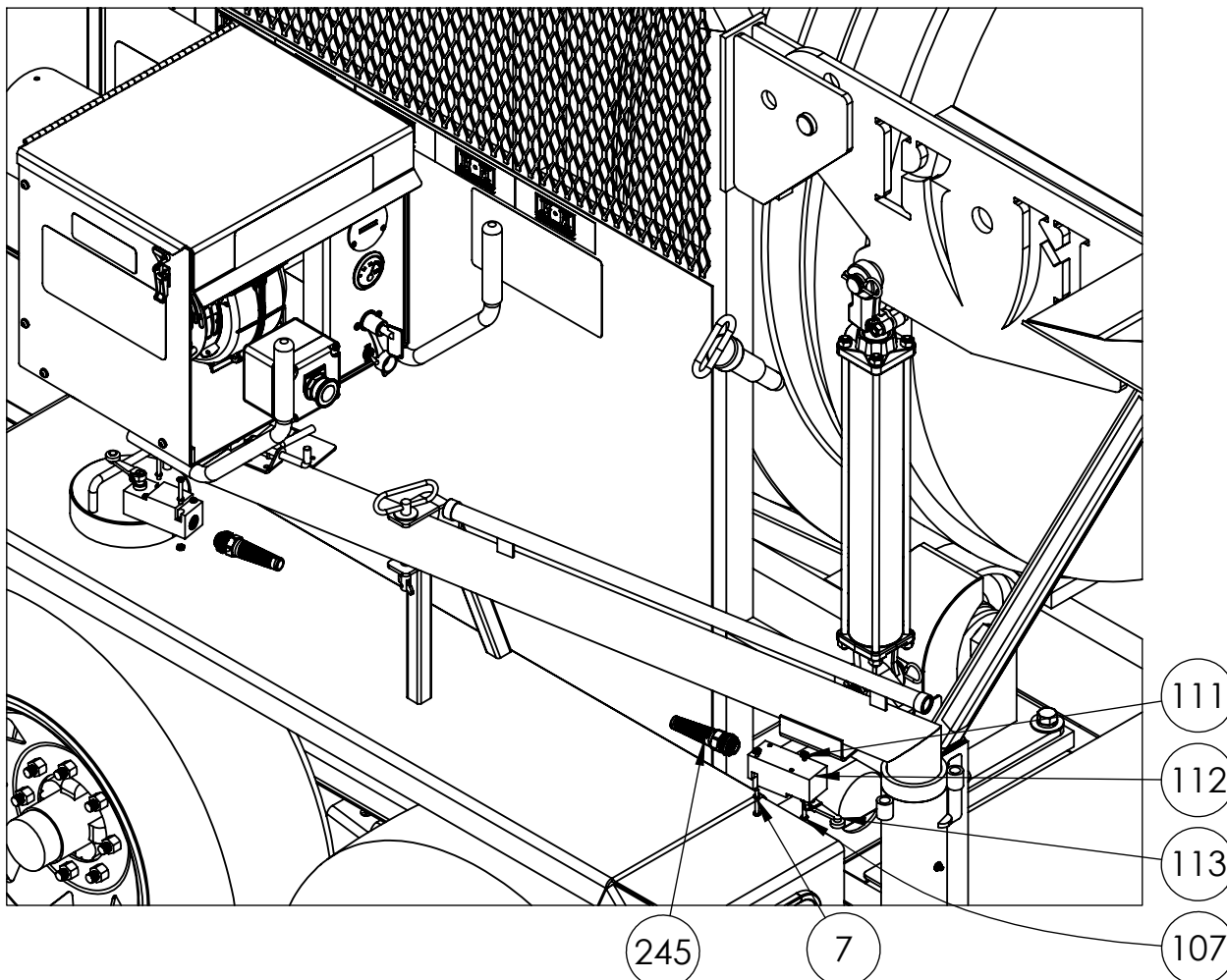



LIMIT SWITCH			
ITEM NO.	PART NUMBER	DESCRIPTION	QTY.
7	1133614	#10 SPLIT LOCK WASHER	2
107	1129083	10-32 X 1 1/2" PHIL PAN HEAD M/S	2
111	1136030	#10-32 MACHINE SCREW NUT	2
112	SQD9007C54B2	LIMIT SWITCH LEVER ARM TYPE	1
113	SQD9007CA11	LEVER ARM (FOR LIMIT SWITCH)	1
245	24618	STRAIN RELIEF W/ FLEX NUT 1/2" NPT, .20 - .35" CABLE DIA	1



<div>PROPRIETARY AND CONFIDENTIAL</div> <div>THE INFORMATION CONTAINED IN THIS DRAWING IS THE SOLE PROPERTY OF KEIZER MORRIS INTERNATIONAL. ANY REPRODUCTION IN PART OR AS A WHOLE WITHOUT THE WRITTEN PERMISSION OF KEIZER MORRIS INTERNATIONAL IS PROHIBITED.</div>	PROJECT	NAME	DATE	DESCRIPTION:
	T2-M1	Gary R.	Tuesday, October 6, 2020 2:02:49 PM	KM T-2 M1 ASSEMBLY
	MATERIAL			

**TM**

DWG. NO. KM T-2 M1 ASSEMBLY

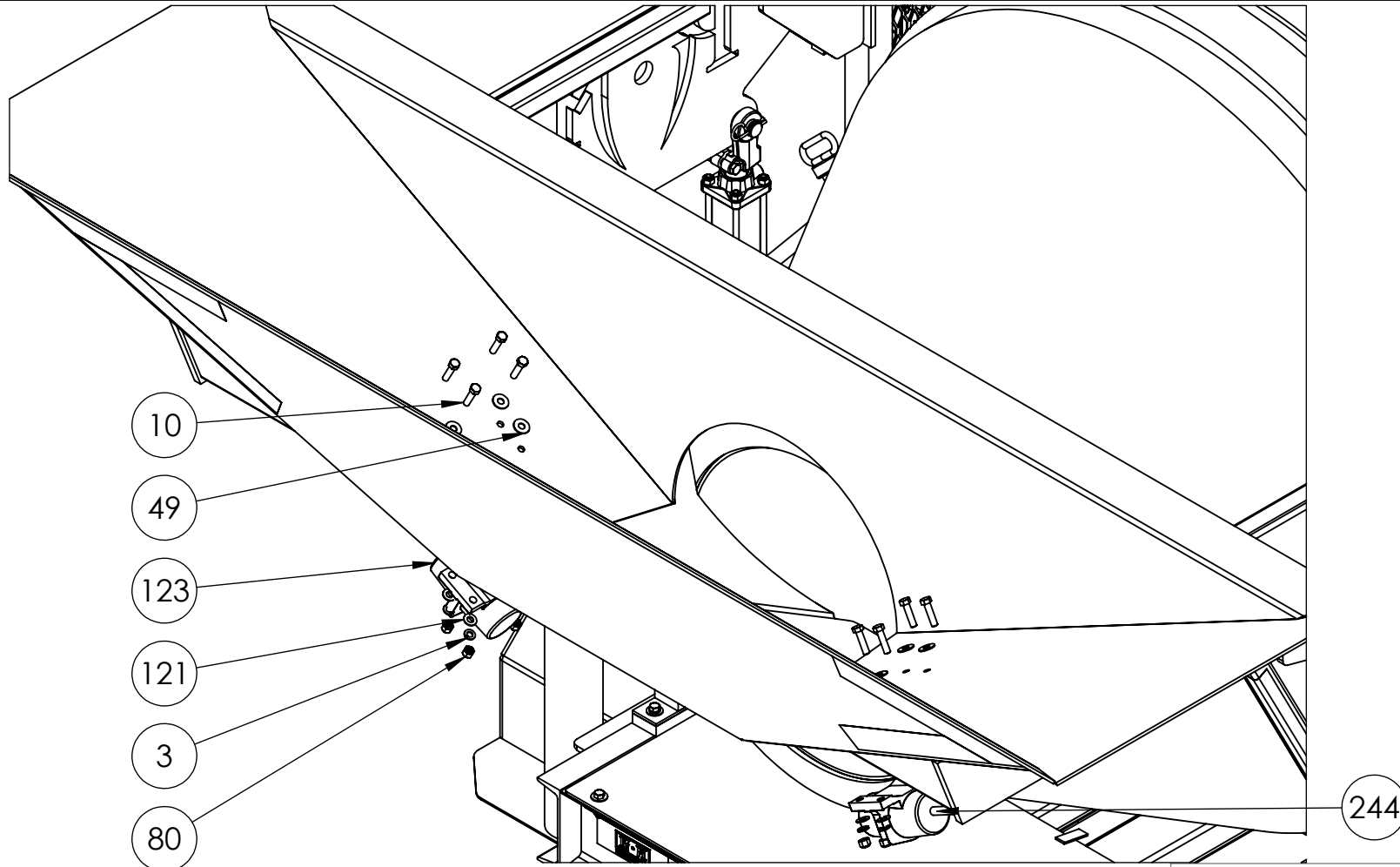
PART NO. KM T-2 M1 ASSEMBLY

NOT TO SCALE

SHEET 18 OF 23

# VIBRATORS

ITEM NO.	PART NUMBER	DESCRIPTION	QTY.
3	1133622	3/8" SPLIT LOCK WASHER	4
10	110120346	3/8-16 x 1 1/2" HEX CAP SCREW GR 5	4
49	1133008	3/8" USS FLAT WASHER	4
80	1137024	3/8-16 NYLON INSERT LOCKNUT GR 2	4
121	1133815	3/8" YELLOW SAE THRU-HARDENED FLAT WASHER	4
123	200442-KMI	DC-200 ELECTRIC VIBRATOR (INCLUDES 20' POWER CORD)	1
244	22446C	1" POLYOLEFIN BLACK 2:1 RATIO HEAT SHRINK	7"



## PROPRIETARY AND CONFIDENTIAL

THE INFORMATION CONTAINED IN THIS DRAWING IS THE SOLE PROPERTY OF KEIZER MORRIS INTERNATIONAL. ANY REPRODUCTION IN PART OR AS A WHOLE WITHOUT THE WRITTEN PERMISSION OF KEIZER MORRIS INTERNATIONAL IS PROHIBITED.

## PROJECT

T2-M1

## NAME

Gary R.

## DATE

Tuesday, October 6, 2020 2:02:49 PM

## DESCRIPTION:

KM T-2 M1 ASSEMBLY

## MATERIAL



TM

DWG. NO. KM T-2 M1 ASSEMBLY

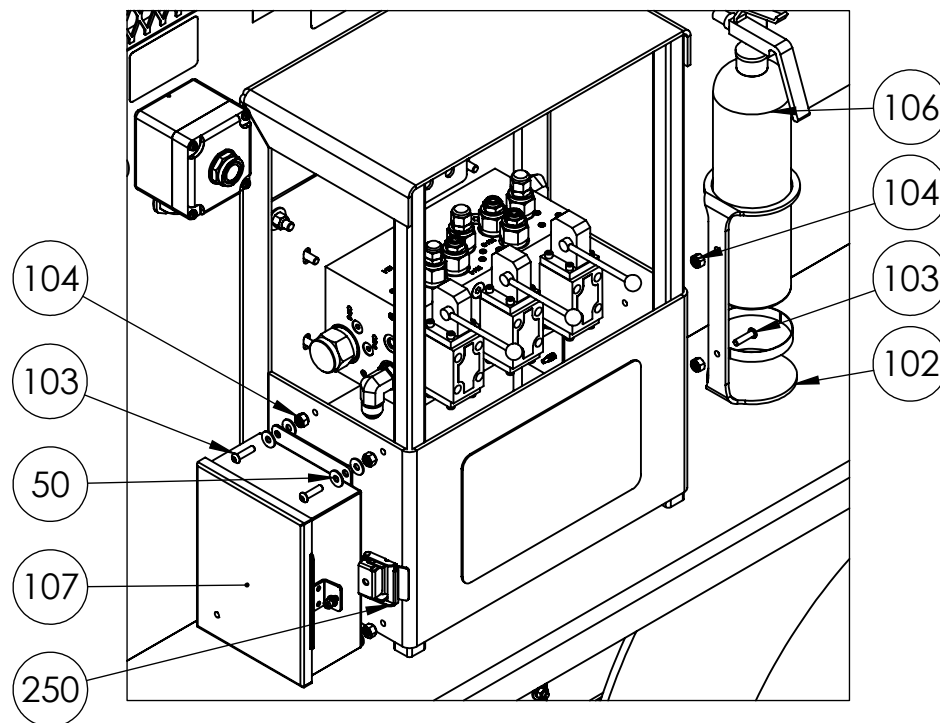
PART NO. KM T-2 M1 ASSEMBLY


NOT TO SCALE

SHEET 19 OF 23

## HYDRAULIC CONTROLS

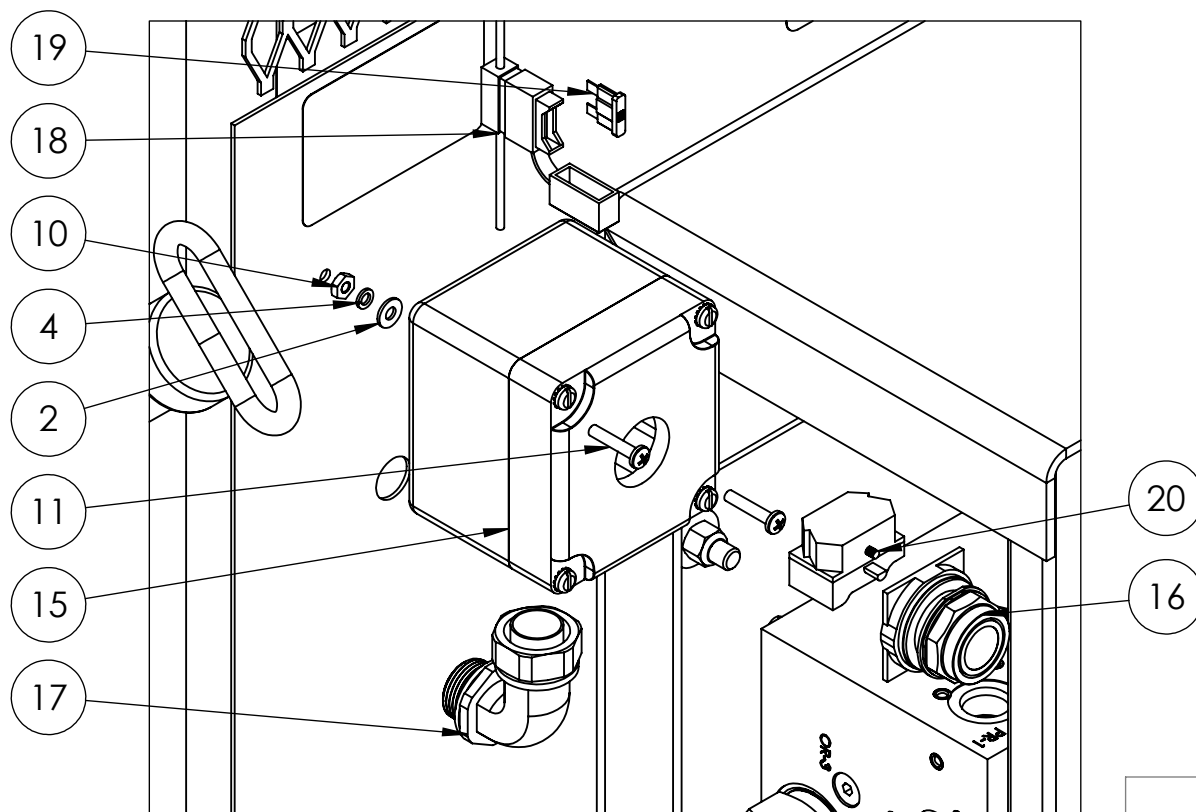
ITEM NO.	PART NUMBER	DESCRIPTION	QTY.
50	1133004	1/4" USS FLAT WASHER	10
102	KMI0937-0	FIRE EXTINGUISHER MOUNT/BRACKET	1
103	73755	1/4"-20 X 1" (ALLEN HEAD) BUTTON SOCKET CAP SCREW 18-8 SS	6
104	1137018	1/4- 20 NYLON INSERT LOCK NUT GR2	6
106	1008809	2.9 LB BC FIRE EXTINGUISHER	1
107	HAMHJ863HLP	8" X 6" X 3.5" - CONTINUOUS HINGE BOX (T-2 TOOL BOX)	1
250	HOFAL23	JIC CONTROL BOX LATCH	1



<div>PROPRIETARY AND CONFIDENTIAL</div> <div>THE INFORMATION CONTAINED IN THIS DRAWING IS THE SOLE PROPERTY OF KEIZER MORRIS INTERNATIONAL. ANY REPRODUCTION IN PART OR AS A WHOLE WITHOUT THE WRITTEN PERMISSION OF KEIZER MORRIS INTERNATIONAL IS PROHIBITED.</div>	PROJECT	NAME	DATE	DESCRIPTION:	<div><b>TM</b></div> <div>DWG. NO. KM T-2 M1 ASSEMBLY</div> <div>PART NO. KM T-2 M1 ASSEMBLY</div> <div>NOT TO SCALE</div> <div>SHEET 20 OF 23</div>
	T2-M1	Gary R.	Tuesday, October 6, 2020 2:02:49 PM	KM T-2 M1 ASSEMBLY	
	MATERIAL				

## VIBRATOR BUTTON

ITEM NO.	PART NUMBER	DESCRIPTION	QTY.
2	1133074	#10 SAE FLAT WASHER	2
4	1133614	#10 SPLIT LOCK WASHER	2
10	1136030	#10-32 MACHINE SCREW NUT	2
11	1129073	10-32 X 1" PHIL PAN HEAD M/S	2
15	SQD9001KY1	ENCLOSURE, FOR E-STOP PUSH BUTTON, 30 MM	1
16	SQD9001KR1U	PUSH BUTTON 30 MM SWITCH FOR T2 VIBRATOR	1
17	KONLTQ7590KON	3/4" 90° SEALTITE CONNECTOR	1
18	9538	INLINE FUSE HOLDER 14 GA, WEATHER RESISTANT, 4" LEADS	1
19	47030	BLADE FUSE ATO/ATC 30 AMP (GREEN)	1
20	SQD9001KA2	CONTACT BLOCK, 30 MM, 1 NO, (GRN) **FOR PUSH BUTTON E-STOP (T2) KUBOTA DIESEL**	1



### PROPRIETARY AND CONFIDENTIAL

THE INFORMATION CONTAINED IN THIS DRAWING IS THE SOLE PROPERTY OF KEIZER MORRIS INTERNATIONAL. ANY REPRODUCTION IN PART OR AS A WHOLE WITHOUT THE WRITTEN PERMISSION OF KEIZER MORRIS INTERNATIONAL IS PROHIBITED.

### PROJECT

T2-M1

### NAME

Gary R.

### DATE

Tuesday, October 6, 2020 2:02:49 PM

### DESCRIPTION:

KM T-2 M1 ASSEMBLY

### MATERIAL



TM

DWG. NO. KM T-2 M1 ASSEMBLY

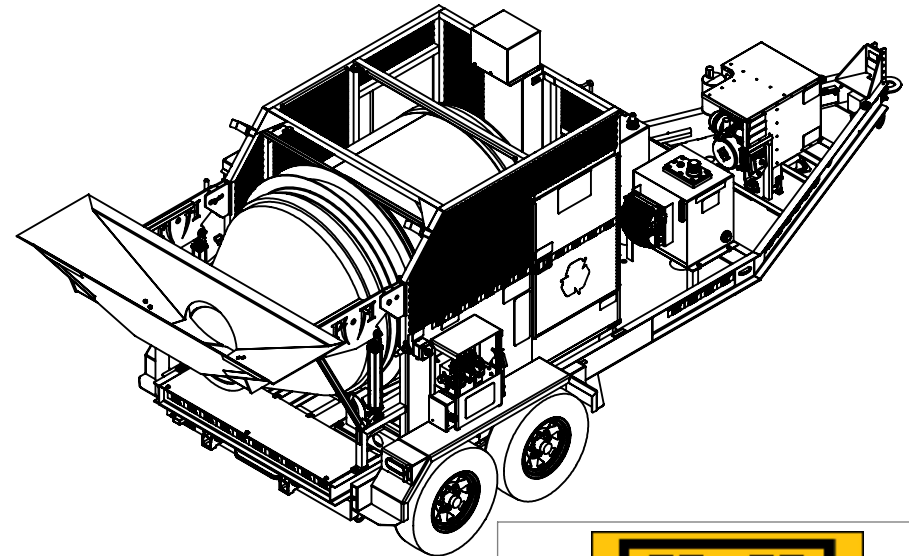
PART NO. KM T-2 M1 ASSEMBLY

NOT TO SCALE

SHEET 21 OF 23

KUBOTA ENGINE			
ITEM NO.	PART NUMBER	DESCRIPTION	QTY.
2	1133618	1/4" SPLIT LOCK WASHER	3
3	1133622	3/8" SPLIT LOCK WASHER	2
4	1133626	1/2" SPLIT LOCK WASHER	4
20	0115107	3/8-16 X 1 1/4" HEX CAP SCREW GRADE 8	2
49	1133008	3/8" USS FLAT WASHER	2
52	1133012	1/2" USS FLAT WASHER	4
103	73755	1/4"-20 X 1" (ALLEN HEAD) BUTTON SOCKET CAP SCREW 18-8 SS	3
160	ROB606CC	3/16" S.S. RIVET 1/4" TO 3/8" GRIP	10
162	190-	RUBBER HOLD DOWN LATCH	2
163	210128788	M12-1.75 x 50MM CLASS 10.9(GR 8) METRIC HEX CAP SCREW	4
164	D902-12739	KUBOTA DIESEL ENGINE 898 CC, 60 AMP, 3 CYLINDER INLINE, COMPLETE ASSEMBLYW/HVY DTY MUFFLER	1
165	KMI2005-0	ENGINE COVER ASSEMBLY 2 PIECE RIVET STYLE	1
168	52010-45	HEAVY DUTY STABLE FLEX (ENGINE ISOLATOR FOR T-2)	1
169	44251	TOGGLE SWITCH, SPST ON-OFF	1
241	SPA-15192	CUSTOM HVY DTY MUFFLER KIT (D902) - REPLACEMENT FOR KUBOTA DIESEL ENGINE 898 CC	1

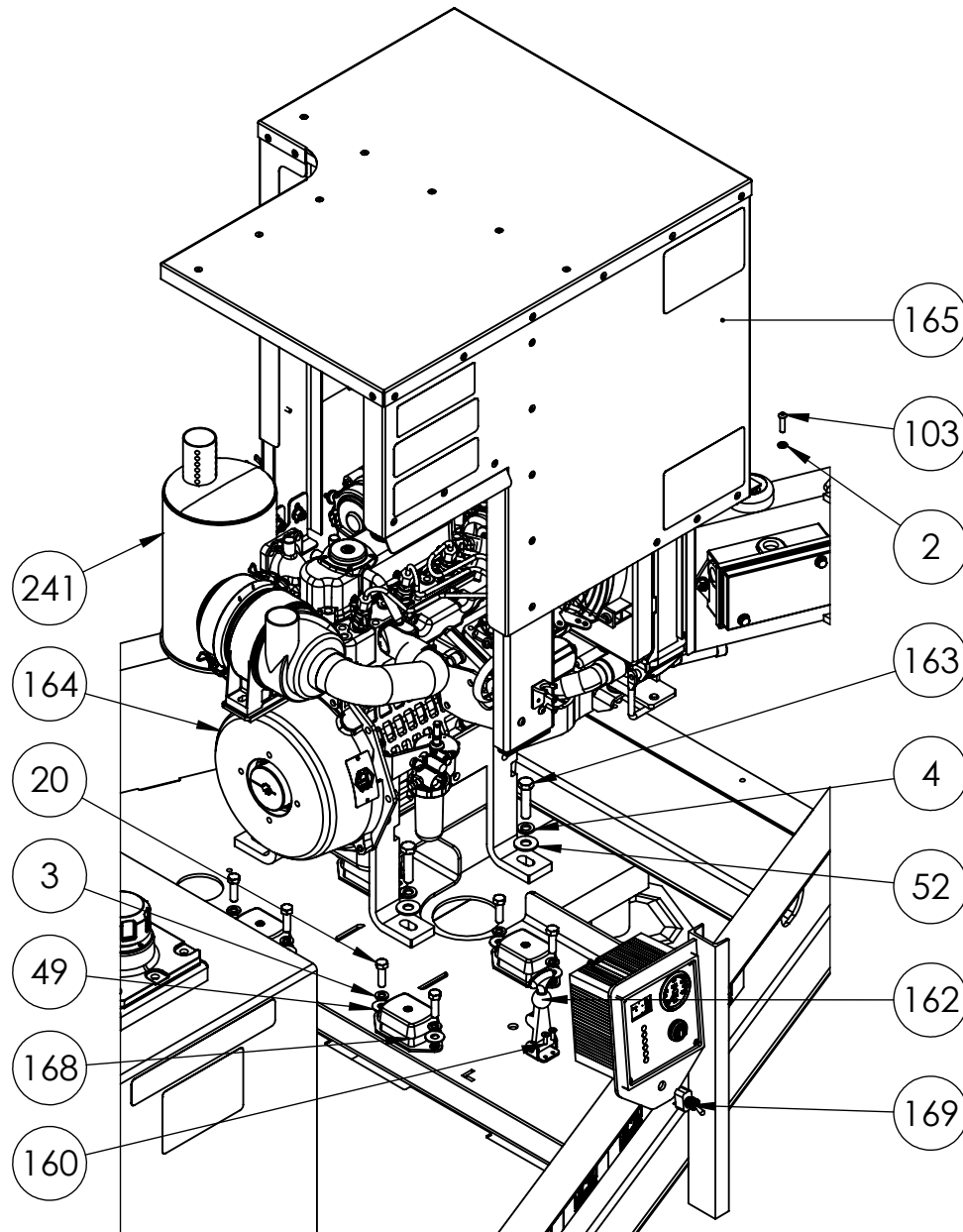
REPLACEMENT KUBOTA PARTS		
PART NUMBER	DESCRIPTION	QTY.
1G659-11222	AIR CLEANER ELEMENT - KUBOTA 898CC (D902)	1
1T021-43560	FUEL FILTER (SIGHT GLASS) - KUBOTA 898CC (D902)	1
FIL3972	FUEL FILTER (INLINE)	1
70000-15241 / HH150-32430	OIL FILTER; KUBOTA 23 HP, D902 898 CC	1
501-0001-00	SPARE KEY FOR KUBOTA DIESEL ENGINE 898 CC, 60 AMP, 3 CYLINDER INLINE, COMPLETE, 2800 RPM, 1400 RPM IDLE ASSEMBLY	1



<b>PROPRIETARY AND CONFIDENTIAL</b> THE INFORMATION CONTAINED IN THIS DRAWING IS THE SOLE PROPERTY OF KEIZER MORRIS INTERNATIONAL. ANY REPRODUCTION IN PART OR AS A WHOLE WITHOUT THE WRITTEN PERMISSION OF KEIZER MORRIS INTERNATIONAL IS PROHIBITED.	PROJECT	NAME	DATE
	T2-M1	Gary R.	Tuesday, October 6, 2020 2:02:49 PM
	MATERIAL		

DESCRIPTION:
KM T-2 M1 ASSEMBLY

	
DWG. NO.	KM T-2 M1 ASSEMBLY
PART NO.	KM T-2 M1 ASSEMBLY
NOT TO SCALE	SHEET 22 OF 23



PROPRIETARY AND CONFIDENTIAL

THE INFORMATION CONTAINED IN THIS DRAWING IS THE SOLE PROPERTY OF KEIZER MORRIS INTERNATIONAL. ANY REPRODUCTION IN PART OR AS A WHOLE WITHOUT THE WRITTEN PERMISSION OF KEIZER MORRIS INTERNATIONAL IS PROHIBITED.

PROJECT

T2-M1

NAME

Gary R.

DATE

Tuesday, October 6, 2020 2:02:49 PM

DESCRIPTION:

KM T-2 M1 ASSEMBLY

MATERIAL



TM

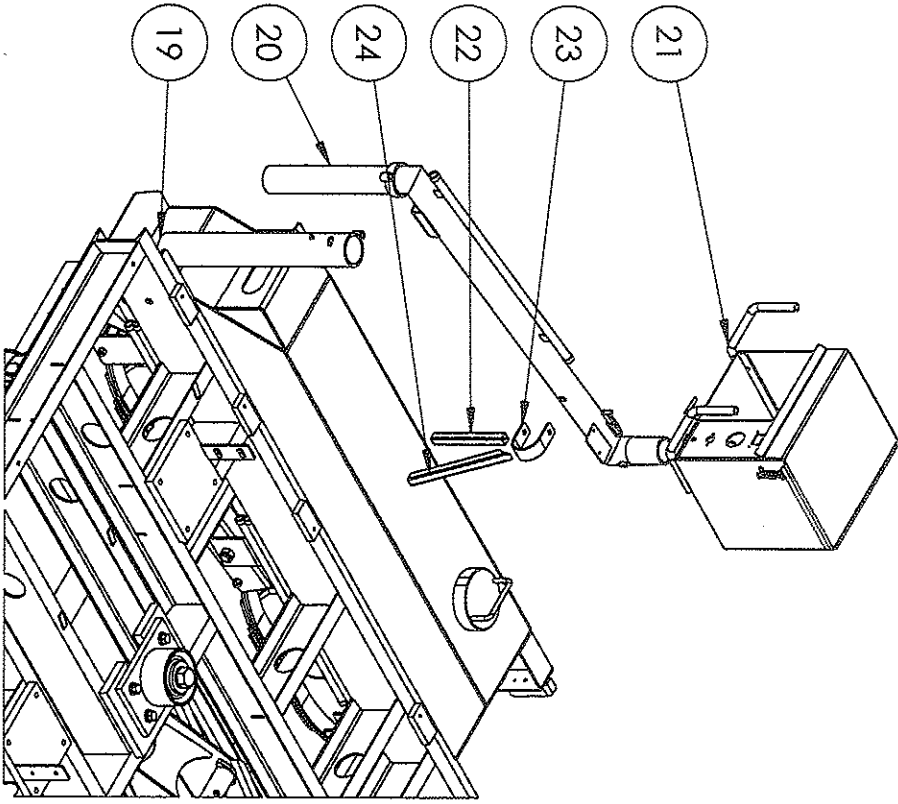
DWG. NO. KM T-2 M1 ASSEMBLY

PART NO. KM T-2 M1 ASSEMBLY


NOT TO SCALE

SHEET 23 OF 23

ITEM NO.	PART NUMBER	DESCRIPTION	DrawingNumber	QTY.
19	KMI2869-0	MAIN ARM PIVOT TUBE RECIEVER ASSEMBLY	KMI2770	1
20	KMI1043-0	BURNER SWING ARM ASSEMBLY	KMI0944	1
21	KMI0297-0	BURNER BOX ASSEMBLY T-2	KMI0198	1
22	KMI2827-0	1" X 1" SQ TUBE 9" LONG	KMI2728	1
23	KMI1967-0	RADIUS HOOP FOR BURNER ARM HOLD BACK T-2	KMI1868	1
24	KMI2828-0	1" X 1" SQ TUBE 12 LONG ANGLED	KMI2729	1



PROPRIETARY AND CONFIDENTIAL THE INFORMATION CONTAINED IN THIS DRAWING IS THE SOLE PROPERTY OF KEIZER MORRIS INTERNATIONAL. ANY REPRODUCTION IN PART OR AS A WHOLE WITHOUT THE WRITTEN PERMISSION OF KEIZER MORRIS INTERNATIONAL IS PROHIBITED.			
PROJECT	NAME	DATE	
T2-M1	Gary R.	Tuesday, December 14, 2021 5:16:08 PM	
MATERIAL		DESCRIPTION: KM T-2 M1 ASSEMBLY	



DWG. NO. KMT-2 M1 ASSEMBLY

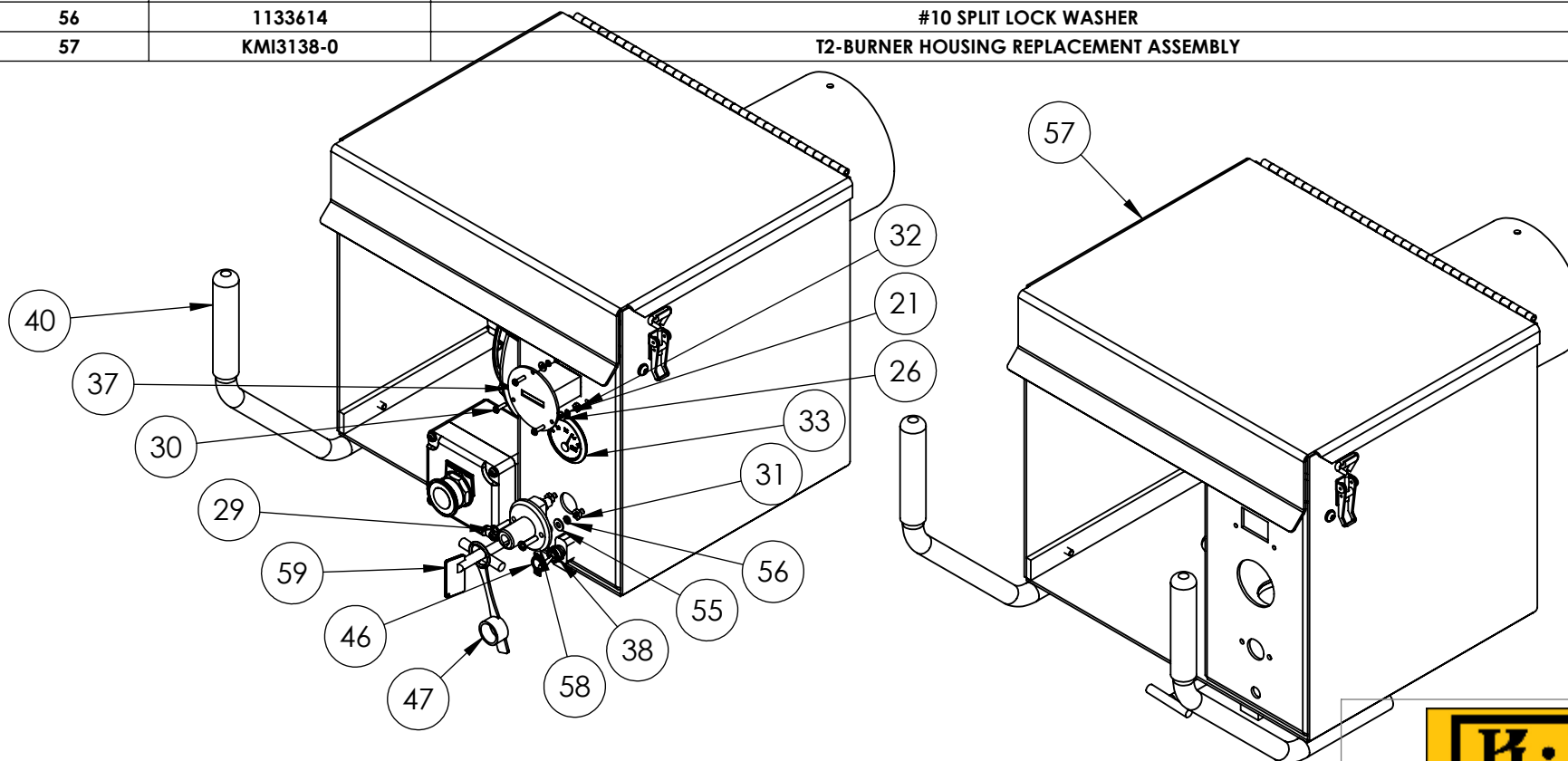
PART NO. KM T-2 M1 ASSEMBLY

NOT TO SCALE



## BURNER BOX HOUSING AND ELECTRICAL

ITEM NO.	PartNo	DESCRIPTION	QTY.
21	1133610	#6 SPLIT LOCK WASHER	3
26	1133070	#6 SAE FLAT WASHER	3
29	1129061	10-32 x 3/4" PHIL PAN HEAD M/S	2
30	1128804	6-32 X 1/2" PHIL PAN HEAD M/S	3
31	1136030	#10-32 MACHINE SCREW NUT	2
32	1136020	#6-32 MACHINE SCREW NUT	3
33	VDO 332-901	VDO 12V COCKPIT VOLTMETER, 8-16 V, 2-1/16" DIAMETER, SHORT SWEEP	1
37	T14B517BC	HOUR METER, QUARTZ, 8-32 V	1
38	44251	TOGGLE SWITCH, SPST ON-OFF	1
40	KMI1336-0	HANDLE GRIP, BLACK, FOAM CUSHIONED, 27/32" OD X 4 3/4" L	2
46	44216	TOGGLE FACE PLATE	1
47	44078	WATERPROOF COVER FOR DISCONNECTS	1
55	1133074	#10 SAE FLAT WASHER	2
56	1133614	#10 SPLIT LOCK WASHER	2
57	KMI3138-0	T2-BURNER HOUSING REPLACEMENT ASSEMBLY	1



### PROPRIETARY AND CONFIDENTIAL

THE INFORMATION CONTAINED IN THIS DRAWING IS THE SOLE PROPERTY OF KEIZER MORRIS INTERNATIONAL. ANY REPRODUCTION IN PART OR AS A WHOLE WITHOUT THE WRITTEN PERMISSION OF KEIZER MORRIS INTERNATIONAL IS PROHIBITED.

### PROJECT

T-2

### NAME

GARY R.

### DATE

Tuesday, January  
17, 2023 8:41:33  
AM

### MATERIAL

### DESCRIPTION:

BURNER BOX ASSEMBLY T-2



TM

DWG. NO. KMI0198

PART NO. KMI0297-0

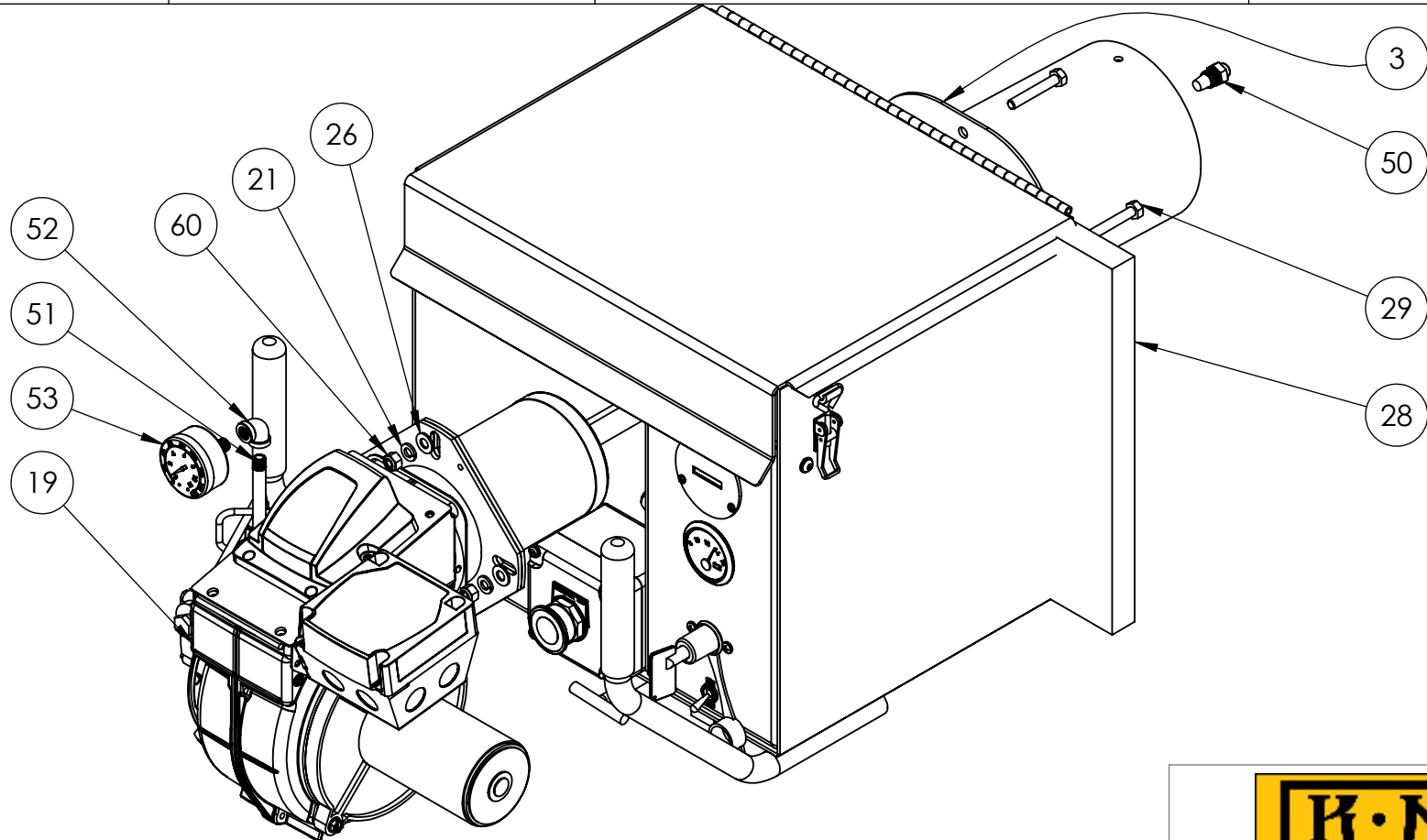
NOT TO SCALE

SHEET 4 OF 6



## BURNER HARDWARE

ITEM NO.	PartNo	DESCRIPTION	QTY.
3	KMI0299-0	BURNER NOZZLE ASSEMBLY	1
19	KEM201	BECKETT BURNER MODEL SDC 14 VOLT(DIESEL) - KM STD T2	1
21	1133620	5/16" SPLIT LOCK WASHER	4
26	1133080	5/16" SAE FLAT WASHER	3
28	KMI1983-0	KAWL M-BOARD (CERAMIC BOARD)	15 3/4" X 14"
29	110120329	5/16-18 X 2" HEX CAP SCREW GR 5	3
50	2622	BURNER NOZZLE FOR SDC BURNER 4.50 X 80B	1
51	4666405	1/8"x 3 1/2" BLACK STEEL NIPPLE	1
52	66200	1/8" 90° BLACK MALL ELBOW	1
53	102D-208F	0-160 PSI BACK MOUNT GAUGE (1/8" NPT)	1
60	1137021	5/16-18 NYLON INSERT LOCKNUT GR 2	3



**PROPRIETARY AND CONFIDENTIAL**

THE INFORMATION CONTAINED IN THIS DRAWING IS THE SOLE PROPERTY OF KEIZER MORRIS INTERNATIONAL. ANY REPRODUCTION IN PART OR AS A WHOLE WITHOUT THE WRITTEN PERMISSION OF KEIZER MORRIS INTERNATIONAL IS PROHIBITED.

PROJECT

T-2

NAME

GARY R.

DATE

Tuesday, January  
17, 2023 8:41:33  
AM

DESCRIPTION:

BURNER BOX ASSEMBLY T-2

MATERIAL



TM

DWG. NO. KMI0198

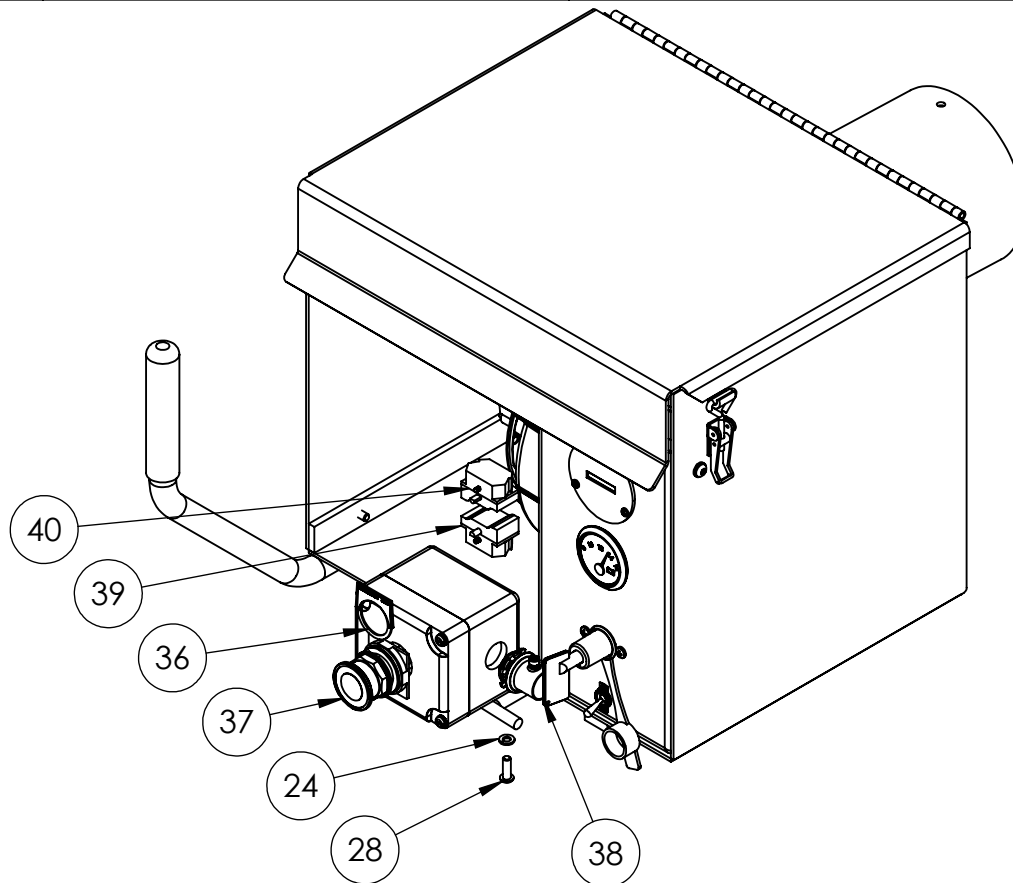
PART NO. KMI0297-0

NOT TO SCALE

SHEET 5 OF 6

## EMERGENCY STOP

ITEM NO.	PartNo	DESCRIPTION	QTY.
24	1133618	1/4" SPLIT LOCK WASHER	1
28	1173754	1/4"-20 X 3/4" (ALLEN HEAD) BUTTON SOCKET CAP SCREW 18-8 SS	1
36	SQD9001KN205	LEGEND PLATE FOR E-STOP PUSH BUTTON, 30 MM, "EMERGENCY STOP"	1
37	SQD9001KR9R	E STOP SWITCH, PUSH-PULL 2 POSITION RED BUTTON, 30 MM	1
38	EGS4075S	3/4" EMT SET SCREW CONDUIT CONNECTOR; STEEL	1
39	SQD9001KA2	CONTACT BLOCK, 30 MM, 1 NO, (GRN) **FOR PUSH BUTTON E-STOP (T2) KUBOTA DIESEL**	1
40	SQD9001KA3	CONTACT BLOCK, 30 MM, 1 NC, (RED) **FOR PUSH BUTTON E-STOP BECKETT BURNER & DIAHATSU DIESEL ON T-2**	1



### PROPRIETARY AND CONFIDENTIAL

THE INFORMATION CONTAINED IN THIS DRAWING IS THE SOLE PROPERTY OF KEIZER MORRIS INTERNATIONAL. ANY REPRODUCTION IN PART OR AS A WHOLE WITHOUT THE WRITTEN PERMISSION OF KEIZER MORRIS INTERNATIONAL IS PROHIBITED.

### PROJECT

T-2

### NAME

GARY R.

### DATE

Tuesday, January  
17, 2023 8:41:33  
AM

### DESCRIPTION:

BURNER BOX ASSEMBLY T-2

### MATERIAL



TM

DWG. NO. KMI0198

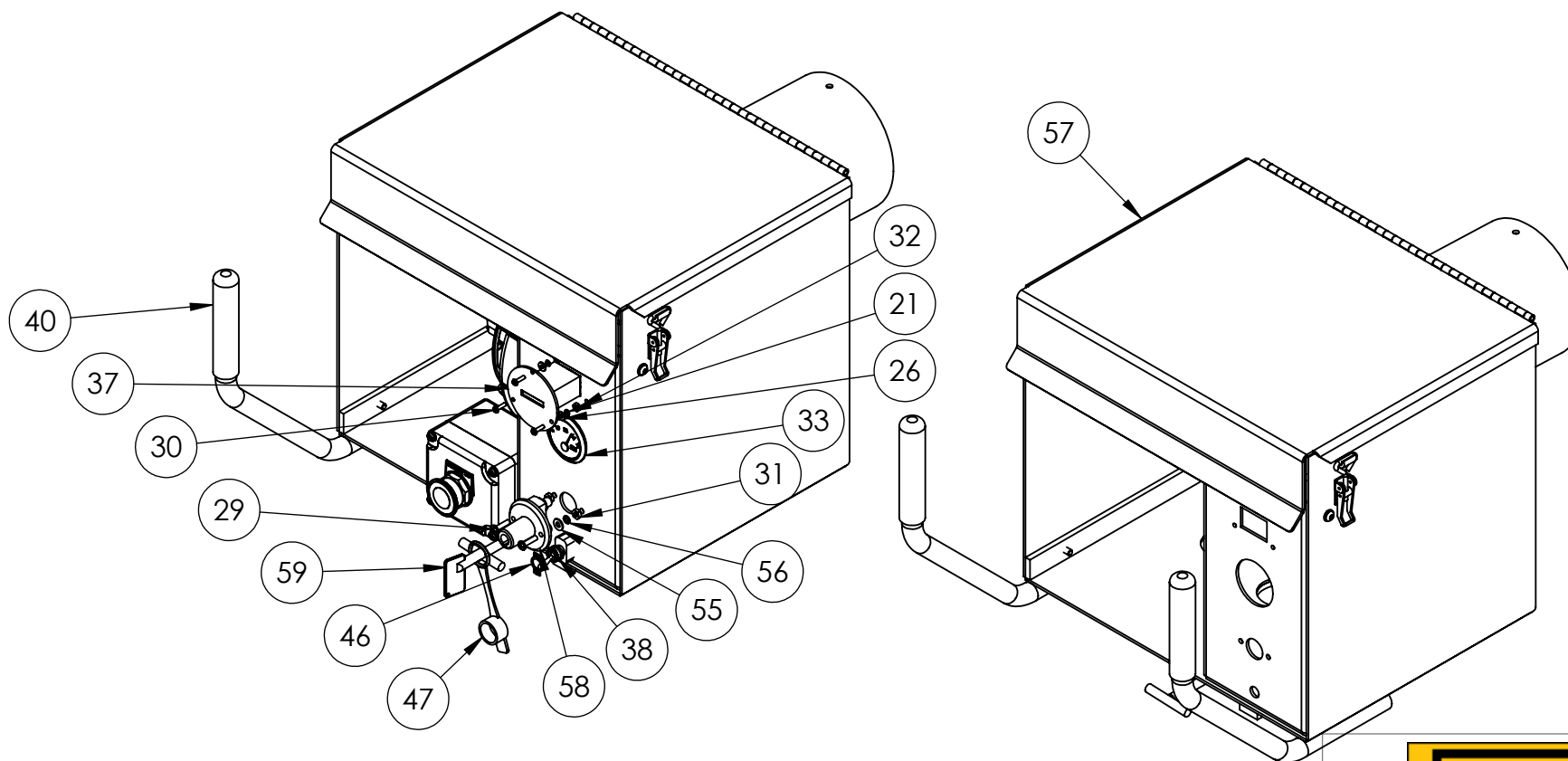
PART NO. KMI0297-0

NOT TO SCALE

SHEET 6 OF 6

# BURNER BOX HOUSING AND ELECTRICAL

ITEM NO.	PART NUMBER	DESCRIPTION	QTY.
21	1133610	#6 SPLIT LOCK WASHER	3
26	1133070	#6 SAE FLAT WASHER	3
29	1129061	10-32 x 3/4" PHIL PAN HEAD M/S	2
30	1128804	6-32 X 1/2" PHIL PAN HEAD M/S	3
31	1136030	#10-32 MACHINE SCREW NUT	2
32	1136020	#6-32 MACHINE SCREW NUT	3
33	VDO 332-901	VDO 12V COCKPIT VOLTMETER, 8-16 V, 2 1/6" DIAMETER, SHORT SWEEP	1
37	T14B517BC	HOUR METER, QUARTZ, 8-32 V	1
38	44251	TOGGLE SWITCH, SPST ON-OFF	1
40	9282K17	HANDLE GRIP, BLACK, FOAM CUSHIONED, 27/32" OD X 4 3/4" L	2
46	44216	TOGGLE FACE PLATE	1
47	44078	WATERPROOF COVER FOR DISCONNECTS	1
55	1133074	#10 SAE FLAT WASHER	2
56	1133614	#10 SPLIT LOCK WASHER	2
57	KMI3138-0	T2-BURNER HOUSING REPLACEMENT ASSEMBLY	1



## PROPRIETARY AND CONFIDENTIAL

THE INFORMATION CONTAINED IN THIS DRAWING IS THE SOLE PROPERTY OF KEIZER MORRIS INTERNATIONAL. ANY REPRODUCTION IN PART OR AS A WHOLE WITHOUT THE WRITTEN PERMISSION OF KEIZER MORRIS INTERNATIONAL IS PROHIBITED.

## PROJECT

T-2

## NAME

GARY R.

## DATE

Wednesday, April  
6, 2022 10:38:25  
AM

## DESCRIPTION:

BURNER BOX ASSEMBLY T-2

## MATERIAL



TM

DWG. NO. KMI0198

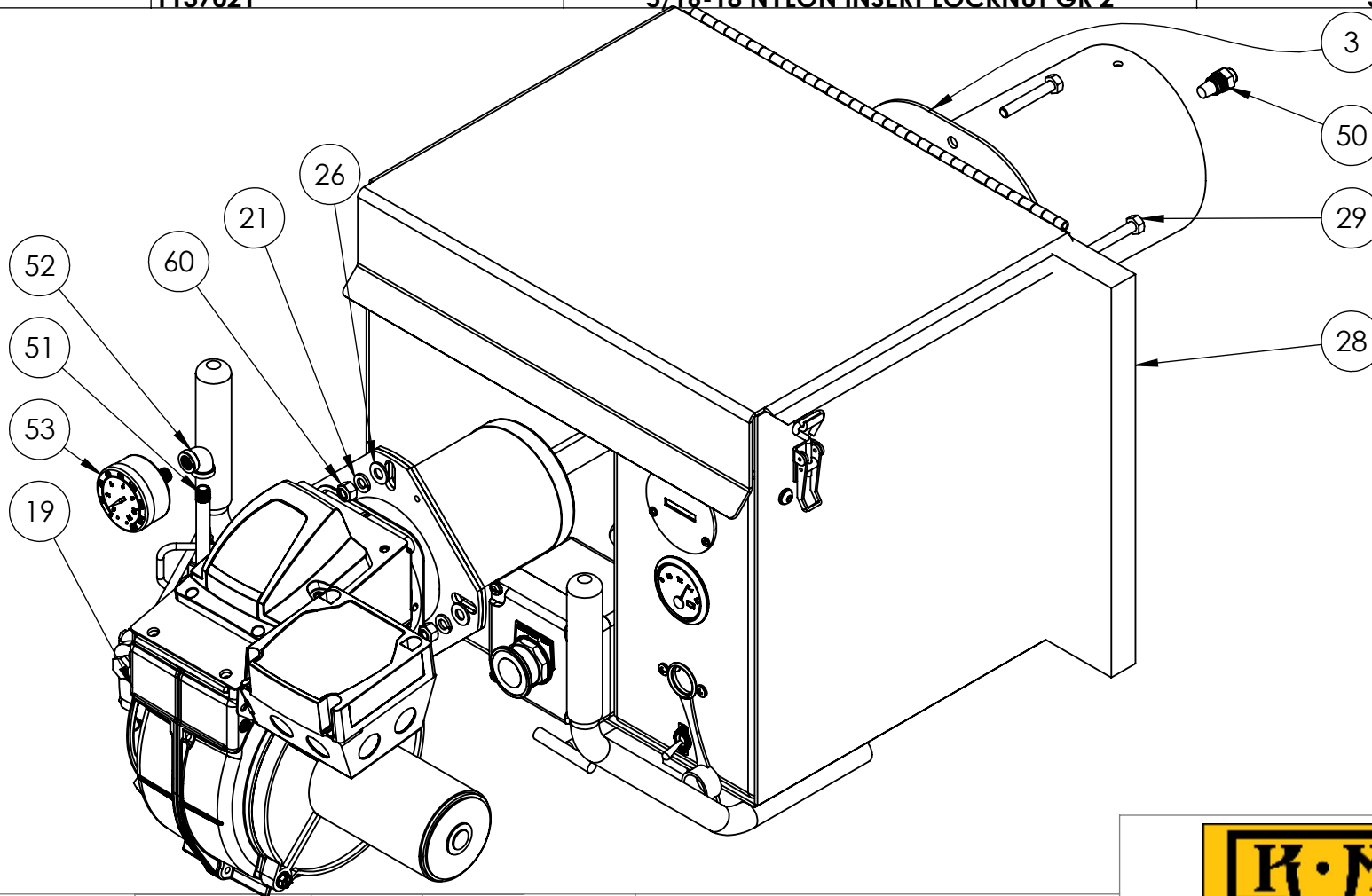
PART NO. KMI0297-0

NOT TO SCALE

SHEET 4 OF 6

# BURNER HARDWARE

ITEM NO.	PART NUMBER	DESCRIPTION	QTY.
3	KMI0299-0	BURNER NOZZLE ASSEMBLY	1
19	B7503	B7503 MODEL SDC GENERIC W/ ADJUSTABLE UNIVERSAL FLANGE - KMI T-2 BURNER	1
21	1133620	5/16" SPLIT LOCK WASHER	4
26	1133080	5/16" SAE FLAT WASHER	3
28	BD-M-362410	KAWL M-BOARD (CERAMIC BOARD)	15 3/4" X 14"
29	110120329	5/16-18 X 2" HEX CAP SCREW GR 5	3
50	2622	BURNER NOZZLE FOR SDC BURNER 4.50 X 80B	1
51	4666405	1/8" X 3 1/2" BLACK STEEL NIPPLE	1
52	66200	1/8" 90° BLACK MALL ELBOW	1
53	102D-208F	0-160 PSI BACK MOUNT GAUGE (1/8" NPT)	1
60	1137021	5/16-18 NYLON INSERT LOCKNUT GR 2	3



## PROPRIETARY AND CONFIDENTIAL

THE INFORMATION CONTAINED IN THIS DRAWING IS THE SOLE PROPERTY OF KEIZER MORRIS INTERNATIONAL. ANY REPRODUCTION IN PART OR AS A WHOLE WITHOUT THE WRITTEN PERMISSION OF KEIZER MORRIS INTERNATIONAL IS PROHIBITED.

## PROJECT

T-2

## NAME

GARY R.

## DATE

Wednesday, April  
6, 2022 10:38:25  
AM

## DESCRIPTION:

BURNER BOX ASSEMBLY T-2

## MATERIAL



TM

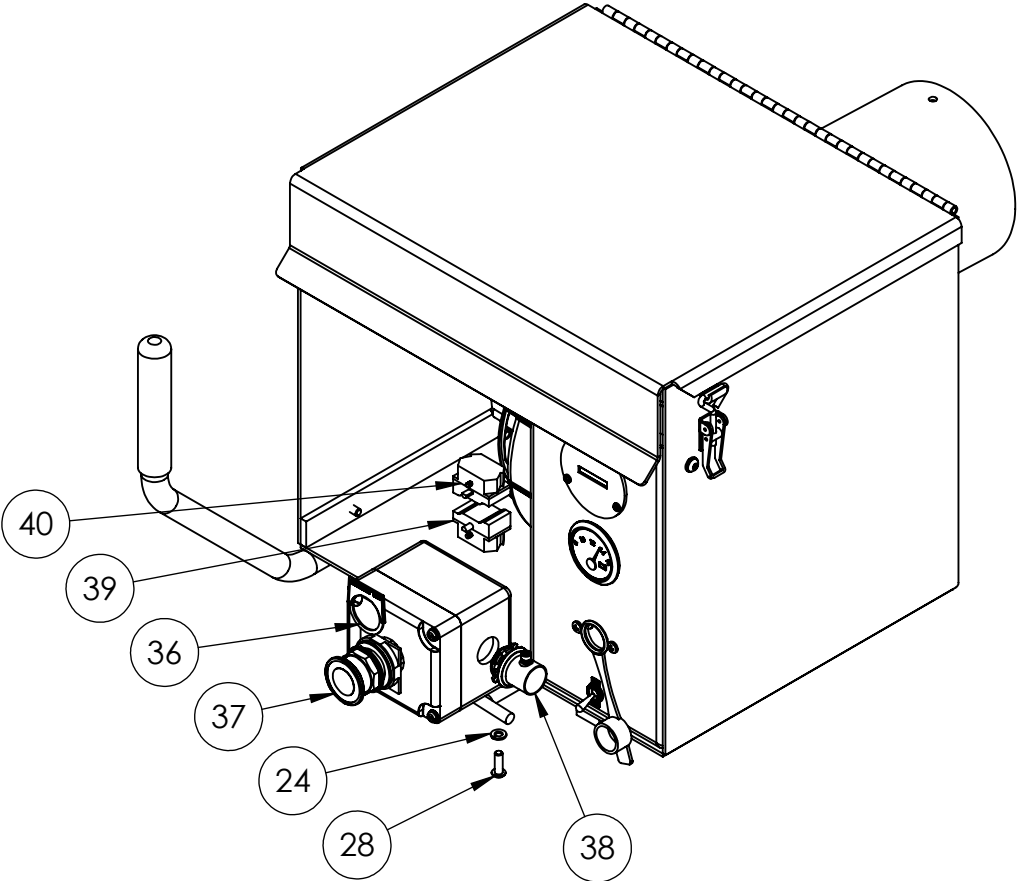
DWG. NO. KMI0198

PART NO. KMI0297-0

NOT TO SCALE

SHEET 5 OF 6

EMERGENCY STOP			
ITEM NO.	PART NUMBER	DESCRIPTION	QTY.
24	1133618	1/4" SPLIT LOCK WASHER	1
28	1173754	1/4"-20 X 3/4" (ALLEN HEAD) BUTTON SOCKET CAP SCREW 18-8 SS	1
36	SQD9001KN205	LEGEND PLATE FOR E-STOP PUSH BUTTON, 30 MM, "EMERGENCY STOP"	1
37	SQD9001KR9R	E STOP SWITCH, PUSH-PULL 2 POSITION RED BUTTON, 30 MM	1
38	EGS4075S	3/4" EMT SET SCREW CONDUIT CONNECTOR; STEEL	1
39	SQD9001KA2	CONTACT BLOCK, 30 MM, 1 NO, (GRN) **FOR PUSH BUTTON E-STOP (T2) KUBOTA DIESEL**	1
40	SQD9001KA3	CONTACT BLOCK, 30 MM, 1 NC, (RED) **FOR PUSH BUTTON E-STOP BECKETT BURNER & DIAHATSU DIESEL ON T-2**	1



PROPRIETARY AND CONFIDENTIAL THE INFORMATION CONTAINED IN THIS DRAWING IS THE SOLE PROPERTY OF KEIZER MORRIS INTERNATIONAL. ANY REPRODUCTION IN PART OR AS A WHOLE WITHOUT THE WRITTEN PERMISSION OF KEIZER MORRIS INTERNATIONAL IS PROHIBITED.	PROJECT	NAME	DATE	DESCRIPTION: BURNER BOX ASSEMBLY T-2
	T-2	GARY R.	Wednesday, April 6, 2022 10:38:25 AM	
	MATERIAL			

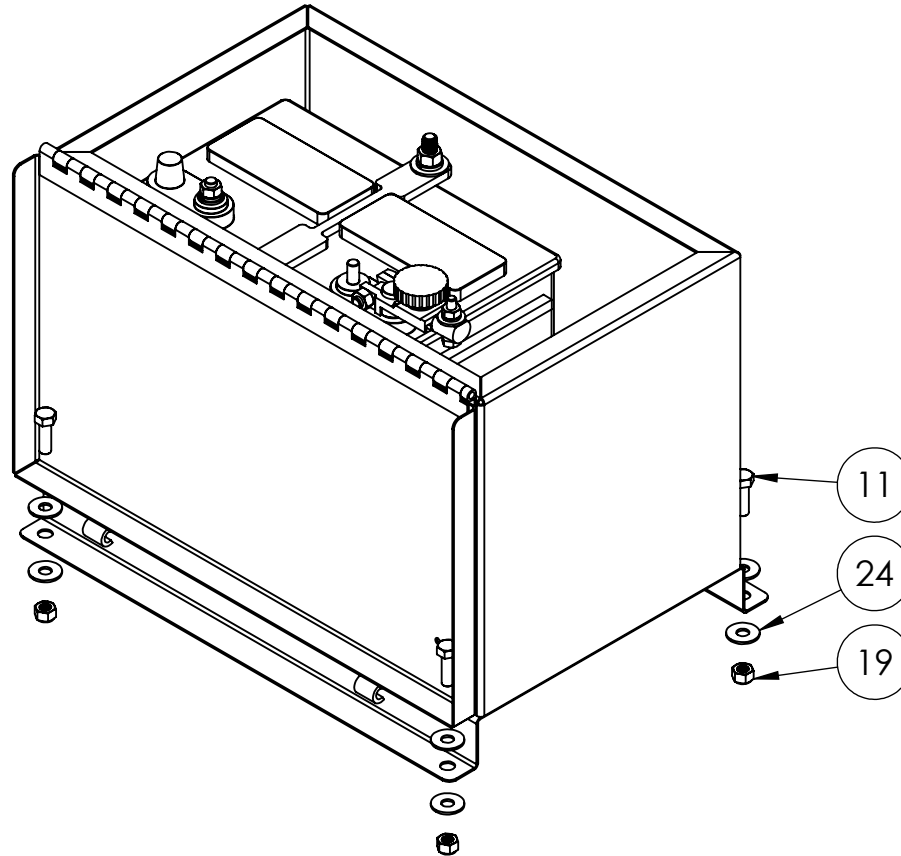

TM

DWG. NO. KMI0198  
 PART NO. KMI0297-0  
 NOT TO SCALE

SHEET 6 OF 6

## BATTERY BOX MOUNTING HARDWARE

ITEM NO.	PART NUMBER	DESCRIPTION	QTY.
11	110120325	5/16-18 X 1" HEX CAP SCREW GR5	4
19	1137021	5/16-18 NYLON INSERT LOCKNUT GR 2	4
24	1133006	5/16" USS FLAT WASHER	8



**PROPRIETARY AND CONFIDENTIAL**

THE INFORMATION CONTAINED IN THIS DRAWING IS THE SOLE PROPERTY OF KEIZER MORRIS INTERNATIONAL. ANY REPRODUCTION IN PART OR AS A WHOLE WITHOUT THE WRITTEN PERMISSION OF KEIZER MORRIS INTERNATIONAL IS PROHIBITED.

PROJECT

**T2-M1**

NAME

Gary R.

DATE

Wednesday,  
November 4, 2020  
3:34:26 PM

DESCRIPTION:

T2 SINGLE BATTERY BOX ASSEMBLY

MATERIAL



**TM**

DWG. NO. KMI1178

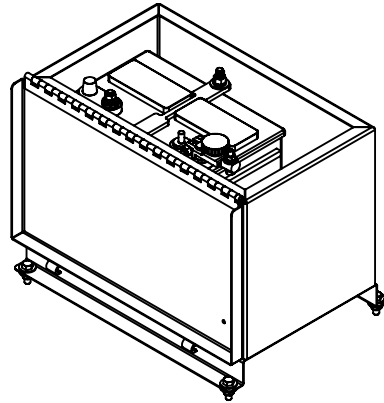
PART NO. KMI1277-1

NOT TO SCALE

SHEET 10 OF 13

## T-2 BATTERY PARTS BREAKDOWN

ITEM NO.	PART NUMBER	DESCRIPTION	QTY.
9	1133008	3/8" USS FLAT WASHER	2
10	1133004	1/4" USS FLAT WASHER	1
12	110120305	1/4- 20 X 1 1/4" HEX CAP SCREW GR 5	1
13	20308-7	BATTERY DISCONNECT SWITCH, KNOB ACTUATOR FOR TOP POST MOUNTING	1
14	1133618	1/4" SPLIT LOCK WASHER	1
15	1133622	3/8" SPLIT LOCK WASHER	2
16	36302	1/4-20 HEX FINISH NUT GR 5	1
17	1136306	3/8-16 HEX FINISH NUT GR 5	2
18	1133080	5/16" SAE FLAT WASHER	1
19	1137021	5/16-18 NYLON INSERT LOCKNUT GR 2	1
20	10326528	HOOK; J TYPE ANCHOR 3/8"-16 X 9.5" THREADED, ROUND J-ZINC	2
21	0709131	RUBBER GROMMET 1" ID X 1 3/4" OD	2
22	KMI1561-0	BATTERY HOLD DOWN, FOR T-2 KM BATTERY BOX	1
23	BAT 8302	12V STD. BATTERY	1
30	1133620	5/16" SPLIT LOCK WASHER	1
31	1136304	5/16-18 HEX FINISH NUT GR 5	1



**PROPRIETARY AND CONFIDENTIAL**

THE INFORMATION CONTAINED IN THIS DRAWING IS THE SOLE PROPERTY OF KEIZER MORRIS INTERNATIONAL. ANY REPRODUCTION IN PART OR AS A WHOLE WITHOUT THE WRITTEN PERMISSION OF KEIZER MORRIS INTERNATIONAL IS PROHIBITED.

PROJECT

**T2-M1**

NAME

Gary R.

DATE

Wednesday,  
November 4, 2020  
3:34:26 PM

MATERIAL

DESCRIPTION:

T2 SINGLE BATTERY BOX ASSEMBLY



**TM**

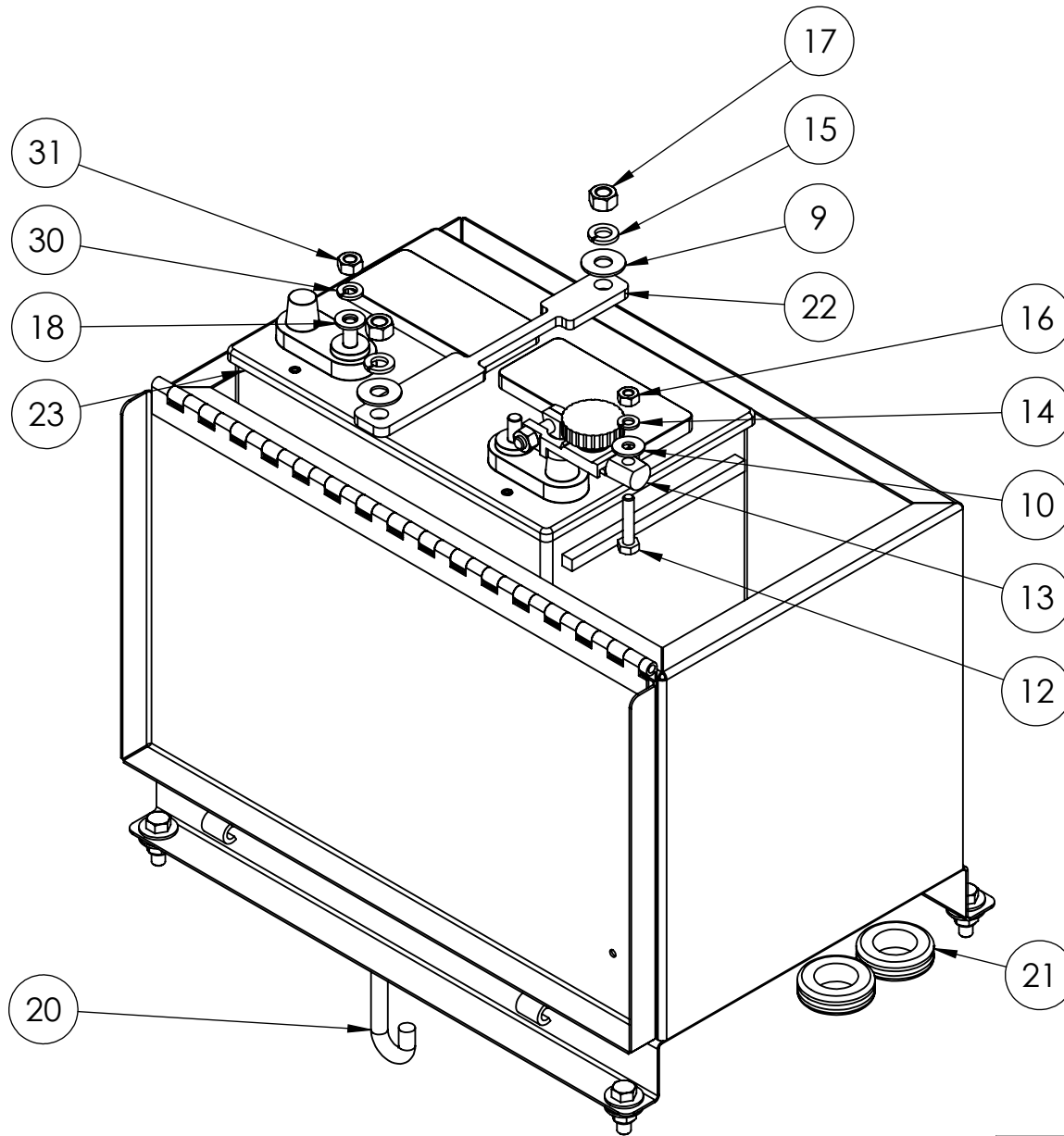
DWG. NO. KMI1178

PART NO. KMI277-1

NOT TO SCALE

SHEET 11 OF 13





TM

DWG. NO. KMI1178

PART NO. KMI1277-1

NOT TO SCALE

SHEET 12 OF 13

PROPRIETARY AND CONFIDENTIAL

THE INFORMATION CONTAINED IN THIS DRAWING IS THE SOLE PROPERTY OF KEIZER MORRIS INTERNATIONAL. ANY REPRODUCTION IN PART OR AS A WHOLE WITHOUT THE WRITTEN PERMISSION OF KEIZER MORRIS INTERNATIONAL IS PROHIBITED.

PROJECT

T2-M1

NAME

Gary R.

DATE

Wednesday,  
November 4, 2020  
3:34:26 PM

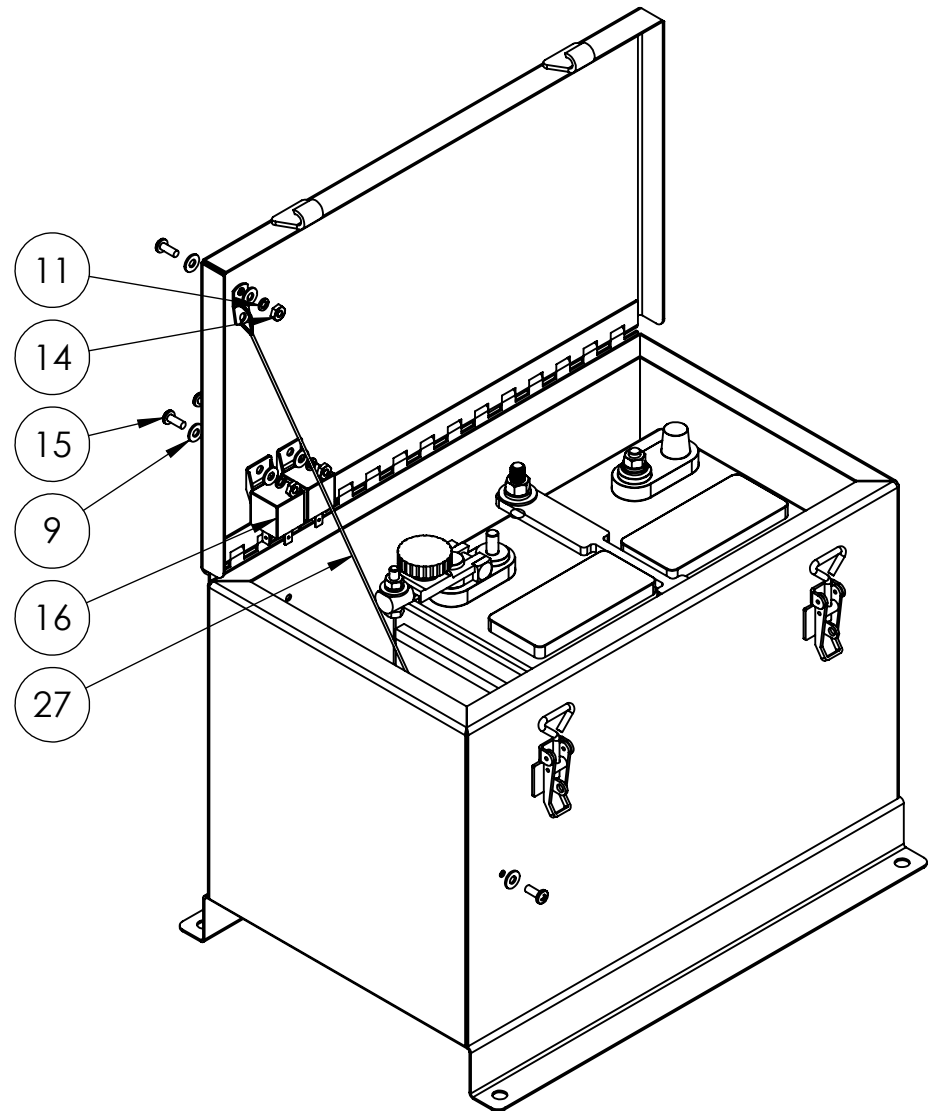
DESCRIPTION:

T2 SINGLE BATTERY BOX ASSEMBLY

MATERIAL

## LANYARD AND RELAYS

ITEM NO.	PART NUMBER	DESCRIPTION	QTY.
9	1133074	#10 SAE FLAT WASHER	8
11	1133614	#10 SPLIT LOCK WASHER	4
14	1136030	#10-32 MACHINE SCREW NUT	4
15	1129049	10- 32 x 1/2" PHIL PAN HEAD M/S	4
16	75411	MINI RELAY, 12V SPDT 40/20 AMP	2
27	90312A999	LANYARD, GALVANIZED STEEL WIRE ROPE LANYARD, STRAIGHT, COATED, LOOP W/TAB X LOOP W/TAB, 3/64" ROPE DIAMETER X 18" LONG	1



### PROPRIETARY AND CONFIDENTIAL

THE INFORMATION CONTAINED IN THIS DRAWING IS THE SOLE PROPERTY OF KEIZER MORRIS INTERNATIONAL. ANY REPRODUCTION IN PART OR AS A WHOLE WITHOUT THE WRITTEN PERMISSION OF KEIZER MORRIS INTERNATIONAL IS PROHIBITED.

### PROJECT

T2-M1

### NAME

Gary R.

### DATE

Wednesday,  
November 4, 2020  
3:34:26 PM

### MATERIAL

### DESCRIPTION:

T2 SINGLE BATTERY BOX ASSEMBLY



TM

DWG. NO. KMI1178

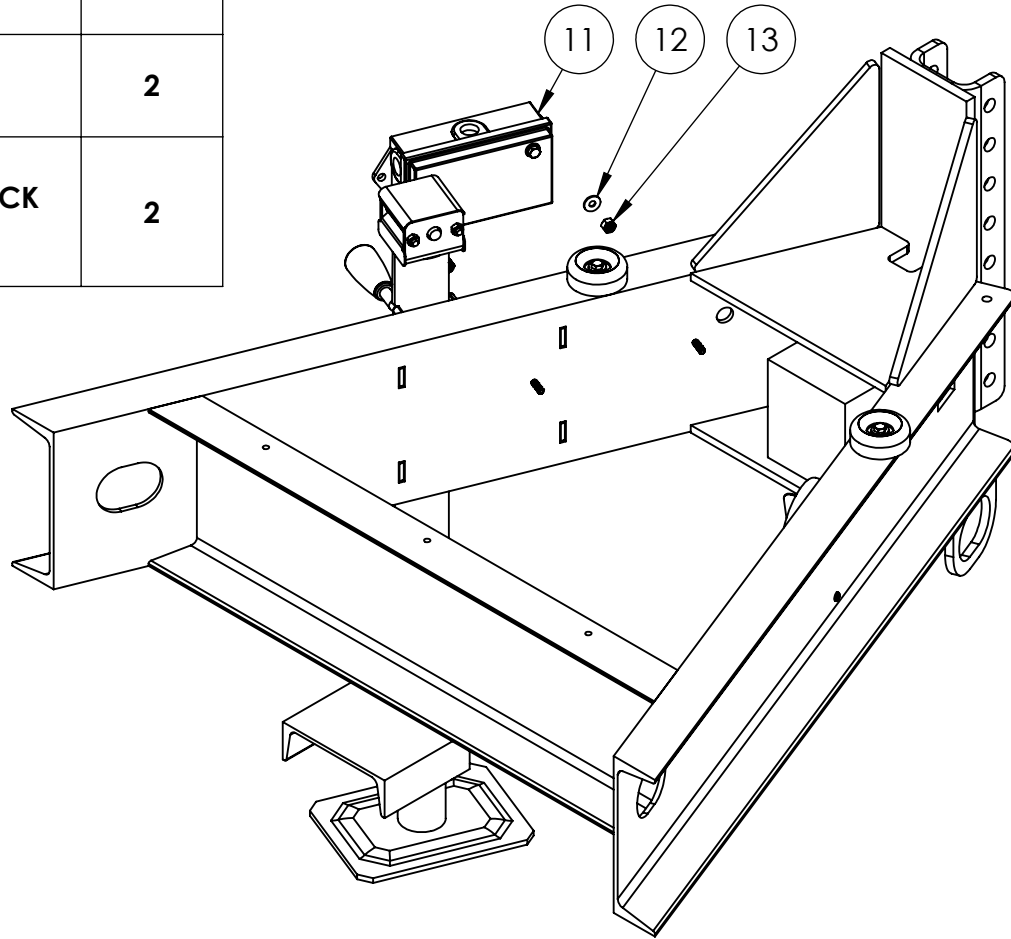
PART NO. KMI1277-1

NOT TO SCALE

SHEET 13 OF 13

## FRONT JUNCTION BOX

ITEM NO.	PART NUMBER	DESCRIPTION	QTY.
11	11898-02110	7 TERMINAL JUNCTION BOX	1
12	1133004	1/4" USS FLAT WASHER	2
13	1137018	1/4- 20 NYLON INSERT LOCK NUT GR2	2



## FRONT JUNCTION BOX



**TM**

DWG. NO. KMI3030

PART NO. KMI3129-0

NOT TO SCALE

SHEET 2 OF 5

### PROPRIETARY AND CONFIDENTIAL

THE INFORMATION CONTAINED IN THIS DRAWING IS THE SOLE PROPERTY OF KEIZER MORRIS INTERNATIONAL. ANY REPRODUCTION IN PART OR AS A WHOLE WITHOUT THE WRITTEN PERMISSION OF KEIZER MORRIS INTERNATIONAL IS PROHIBITED.

### PROJECT

### PARTS BREAKDOWN

### MATERIAL

### NAME

DANIEL F.

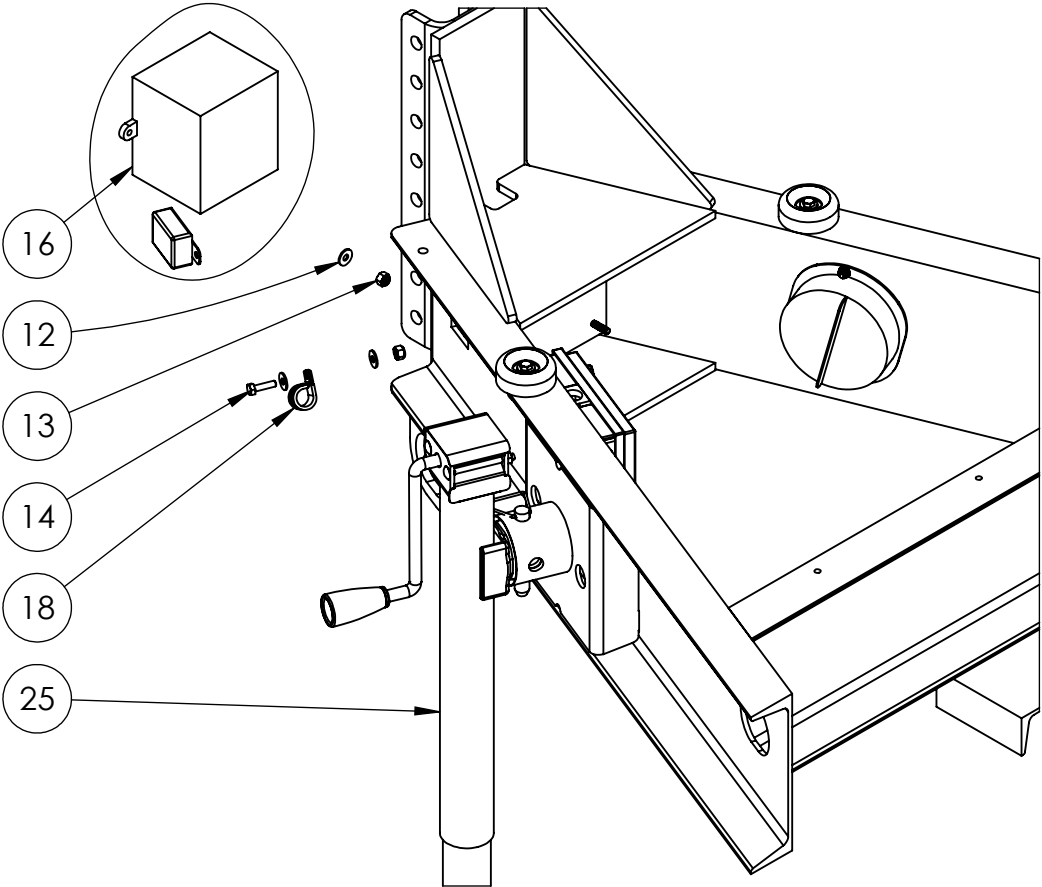
### DATE

Thursday,  
October 1, 2020  
2:21:38 PM

### DESCRIPTION:


T-2 FRONT COMPARTMENT PARTS  
BREAKDOWN

BREAKAWAY KIT			
ITEM NO.	PART NUMBER	DESCRIPTION	QTY.
12	1133004	1/4" USS FLAT WASHER	5
13	1137018	1/4- 20 NYLON INSERT LOCK NUT GR2	3
14	110120304	1/4- 20 x 1" HEX CAP SCREW GR 5	1
16	31-20119	BREAKAWAY KIT W/ 44" LEADS	1
18	0127294	METAL CABLE CLAMP (#12)	1
25	31-198250	7K BULLDOG PIPE JACK, SIDE WIND, PIPE MOUNT, 15" LIFT	1



PROPRIETARY AND CONFIDENTIAL THE INFORMATION CONTAINED IN THIS DRAWING IS THE SOLE PROPERTY OF KEIZER MORRIS INTERNATIONAL. ANY REPRODUCTION IN PART OR AS A WHOLE WITHOUT THE WRITTEN PERMISSION OF KEIZER MORRIS INTERNATIONAL IS PROHIBITED.	PROJECT	NAME	DATE	DESCRIPTION: T-2 FRONT COMPARTMENT PARTS BREAKDOWN
	PARTS BREAKDOWN	DANIEL F.	Thursday, October 1, 2020 2:21:38 PM	
	MATERIAL			

BREAKAWAY KIT



TM

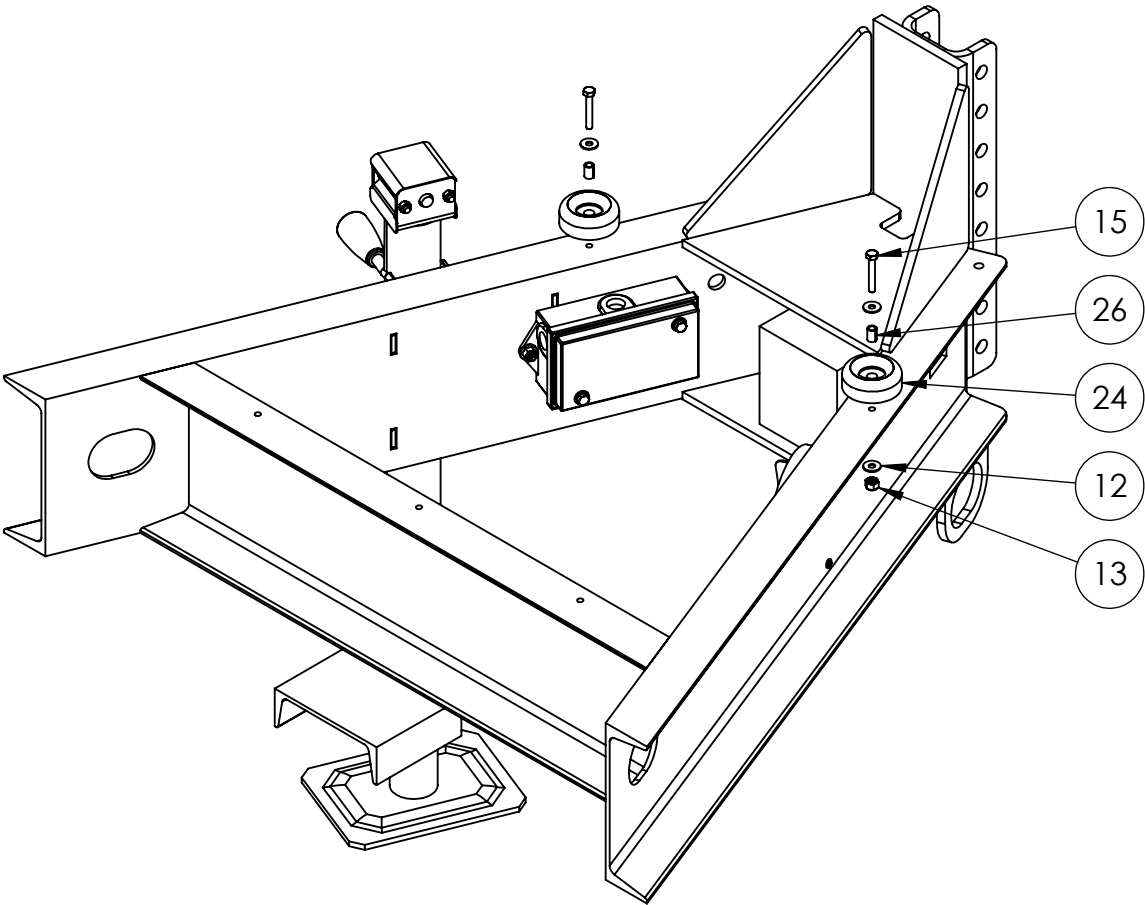
DWG. NO. KMI3030

PART NO. KMI3129-0

NOT TO SCALE

SHEET 3 OF 5

RUBBER BUMPER			
ITEM NO.	PART NUMBER	DESCRIPTION	QTY.
12	1133004	1/4" USS FLAT WASHER	2
13	1137018	1/4- 20 NYLON INSERT LOCK NUT GR2	1
15	13010	1/4-20 X 1 3/4" HEX CAP SCREW GR 5	1
24	613-B	MOLDED RUBBER BUMPER 2 1/2" OD X 1 1/4" ID	1
26	563398278	1/4"- 20 BUSHING FOR PERIMETERS (PLAIN, COLD ROLLED STEEL BUSHING)	1



<b>PROPRIETARY AND CONFIDENTIAL</b> THE INFORMATION CONTAINED IN THIS DRAWING IS THE SOLE PROPERTY OF KEIZER MORRIS INTERNATIONAL. ANY REPRODUCTION IN PART OR AS A WHOLE WITHOUT THE WRITTEN PERMISSION OF KEIZER MORRIS INTERNATIONAL IS PROHIBITED.	PROJECT	NAME	DATE	DESCRIPTION: T-2 FRONT COMPARTMENT PARTS BREAKDOWN
	<b>PARTS BREAKDOWN</b>	DANIEL F.	Thursday, October 1, 2020 2:21:38 PM	
	MATERIAL			


TM

DWG. NO. KMI3030

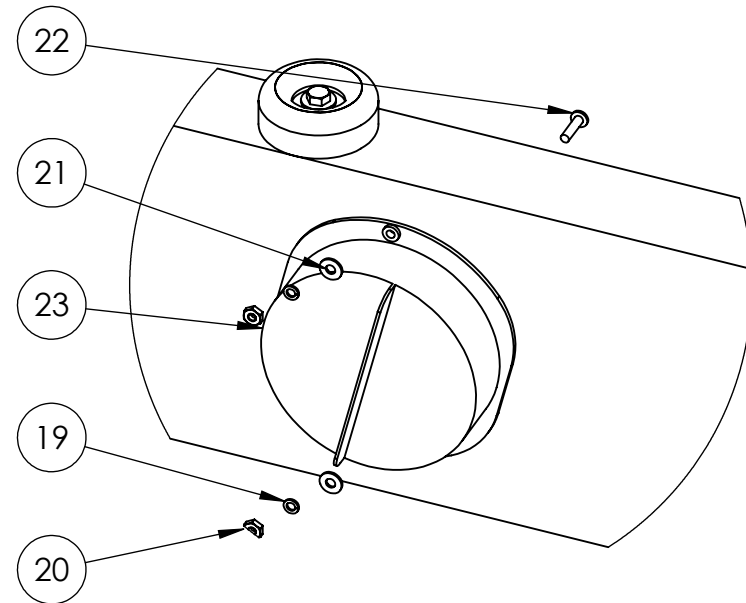
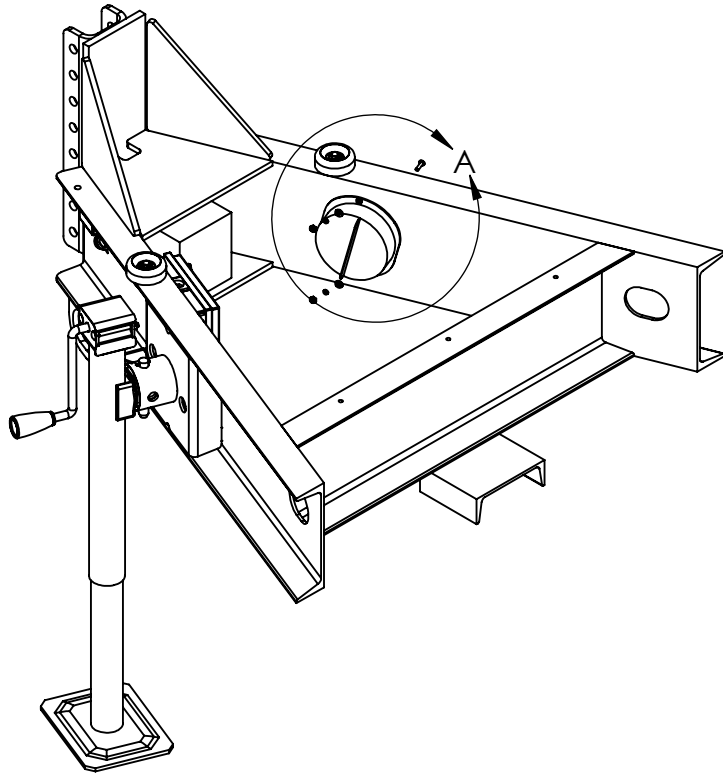
PART NO. KMI3129-0

NOT TO SCALE

SHEET 4 OF 5

## DOCUMENT HOLDER

ITEM NO.	PART NUMBER	DESCRIPTION	QTY.
19	1133614	#10 SPLIT LOCK WASHER	2
20	1136030	#10-32 MACHINE SCREW NUT	2
21	1133074	#10 SAE FLAT WASHER	2
22	1129061	10-32 x 3/4" PHIL PAN HEAD M/S	2
23	97960-3	DOCUMENT HOLDER KIT - COVER W/ADHERED GASKET	1



DETAIL A  
SCALE 1 : 4

**PROPRIETARY AND CONFIDENTIAL**

THE INFORMATION CONTAINED IN THIS DRAWING IS THE SOLE PROPERTY OF KEIZER MORRIS INTERNATIONAL. ANY REPRODUCTION IN PART OR AS A WHOLE WITHOUT THE WRITTEN PERMISSION OF KEIZER MORRIS INTERNATIONAL IS PROHIBITED.

**PROJECT**

**PARTS  
BREAKDOWN**

**NAME**

DANIEL F.

**DATE**

Thursday,  
October 1, 2020  
2:21:38 PM

**MATERIAL**

**DESCRIPTION:**

T-2 FRONT COMPARTMENT PARTS  
BREAKDOWN



**TM**

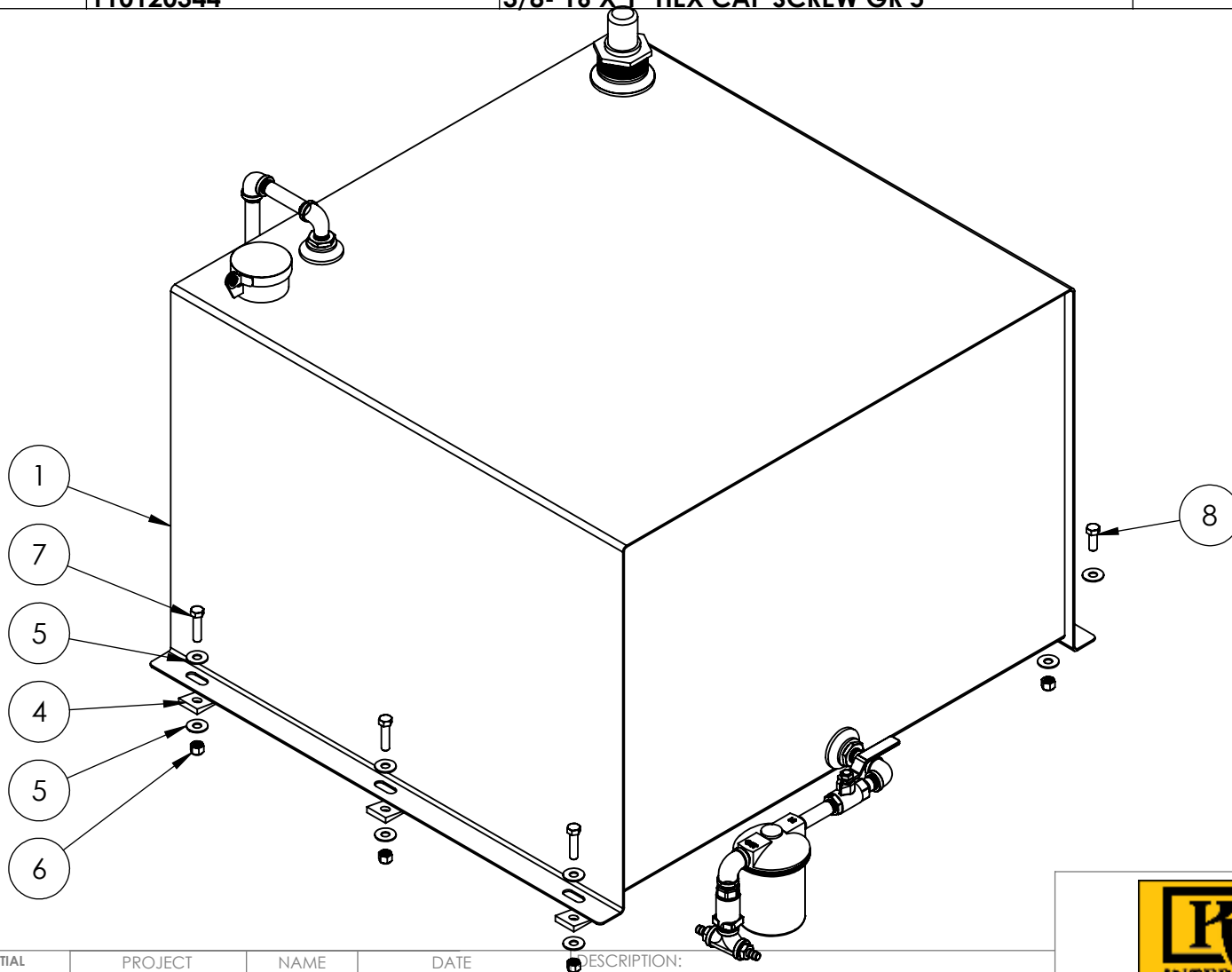
DWG. NO. KMI3030

PART NO. KMI3129-0

NOT TO SCALE

SHEET 5 OF 5

FUEL TANK MOUNTING HARDWARE			
ITEM NO.	PART NUMBER	DESCRIPTION	QTY.
1	100001326 Rev D	FUEL TANK, 80 GAL, 30" X 30" X 20" H, 12 GAUGE ALUMINIZED STEEL, 2" FILL & CAP, 3/4" DRAIN, 3/4" OUTLET 3/4" RETURN AT TOP, POWDER, SEMI-GLOSS BLACK	1
4	1133332	3/8" MALLEABLE BEVEL WASHER	3
5	1133008	3/8" USS FLAT WASHER	12
6	1137024	3/8-16 NYLON INSERT LOCKNUT GR 2	6
7	110120346	3/8-16 x 1 1/2" HEX CAP SCREW GR 5	3
8	110120344	3/8- 16 X 1" HEX CAP SCREW GR 5	3



THE INFORMATION CONTAINED IN THIS  
DRAWING IS THE SOLE PROPERTY OF  
KEIZER MORRIS INTERNATIONAL. ANY  
REPRODUCTION IN PART OR AS A WHOLE  
WITHOUT THE WRITTEN PERMISSION OF  
KEIZER MORRIS INTERNATIONAL IS  
PROHIBITED.

## PARTS BREAKDOWN

DANIEL F.

Thursday,  
September 24,  
2020 10:16:33 AM

## DIESEL FUEL TANK 80 GAL PARTS BREAKDOWN



TM

DWG. NO. KMI3031

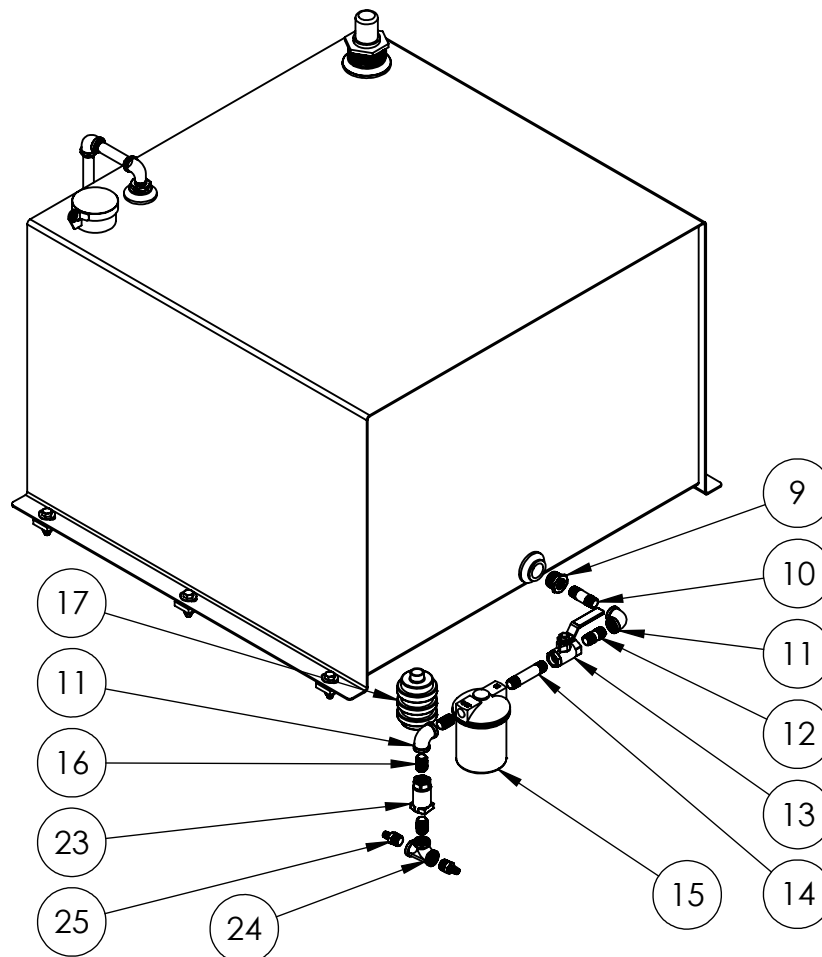
PART NO.	KMI3130-0
----------	-----------


NOT TO SCALE

SHEET 2 OF 4



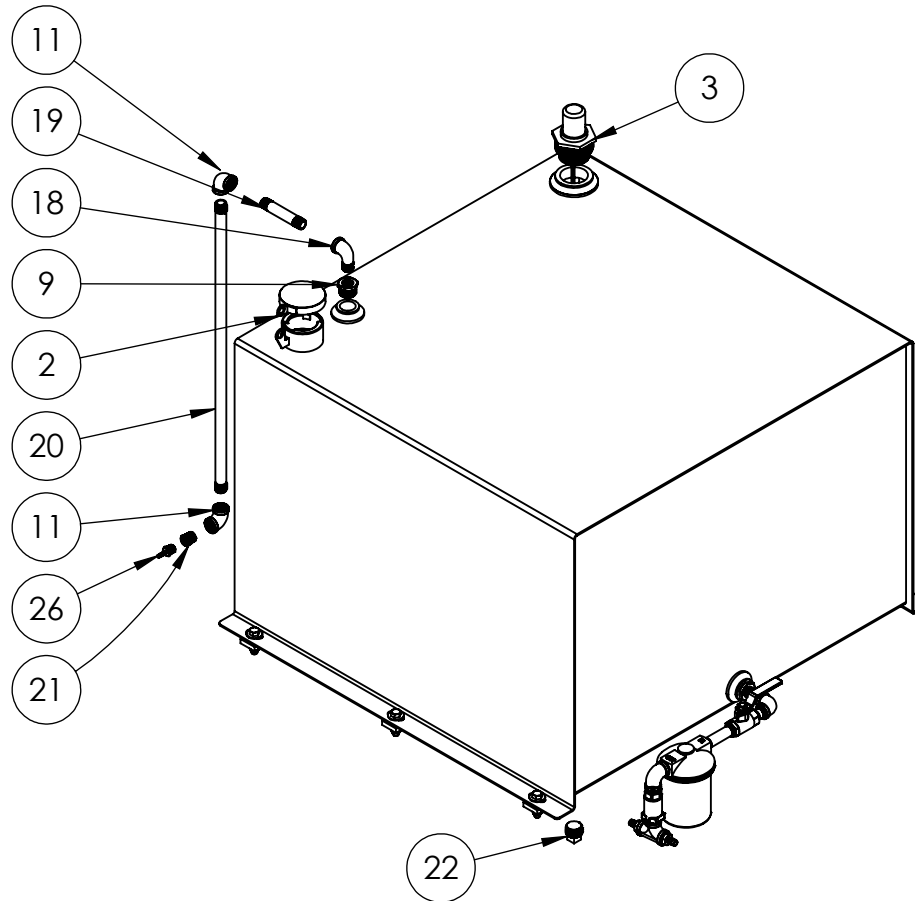
FUEL FILTER				
ITEM NO.	PART NUMBER	DESCRIPTION	QTY.	
9	66290	3/4" x 3/8" BLACK HEX BUSHING	2	
10	4666422	3/8" x 2" BLACK STEEL NIPPLE	1	
11	66202	3/8" 90° BLACK MALL ELBOW	2	
12	4666421	3/8" x 1 1/2" BLACK STEEL NIPPLE	1	
13	BV2103-C	3/8" FULL PORT BALL VALVE	1	
14	4666424	3/8" x 3" BLACK STEEL NIPPLE	1	
15	1A-25B	FUEL OIL FILTER, 10 GPH, 12 PSI, 3/8" NPT	1	
16	4666420	3/8" x CLOSE BLACK STEEL NIPPLE	3	
17	1A-30	FUEL OIL FILTER REPLACEMENT ELEMENT	1	
23	11898-01650	3/8" APOLLO ONE-WAY CHECK VALVE (T2 FUEL SYSTEM)	1	
24	66312	3/8" BLACK MALL TEE	1	
25	125-6C	3/8" HOSE BARB x 3/8" MNPT	2	



<div>PROPRIETARY AND CONFIDENTIAL</div> <div>THE INFORMATION CONTAINED IN THIS DRAWING IS THE SOLE PROPERTY OF KEIZER MORRIS INTERNATIONAL. ANY REPRODUCTION IN PART OR AS A WHOLE WITHOUT THE WRITTEN PERMISSION OF KEIZER MORRIS INTERNATIONAL IS PROHIBITED.</div>	PROJECT	NAME	DATE	DESCRIPTION:  DIESEL FUEL TANK 80 GAL PARTS BREAKDOWN	<div><b>TM</b></div>
	PARTS BREAKDOWN	DANIEL F.	Thursday, September 24, 2020 10:16:33 AM		
	MATERIAL				
<div>DWG. NO. KMI3031</div> <div>PART NO. KMI3130-0</div> <div>NOT TO SCALE</div> <div>SHEET 3 OF 4</div>					

## FUEL TANK FITTINGS

ITEM NO.	PART NUMBER	DESCRIPTION	QTY.
2	211008	FILL CAP 2.593 VENTED W/LUG	1
3	14490A18 REV. 6	GAUGE KING 1-1/2" TO 2" OPENING - DEPTH 18"	1
9	66290	3/4" x 3/8" BLACK HEX BUSHING	2
11	66202	3/8" 90° BLACK MALL ELBOW	2
18	66230	3/8" 90° BLACK MALL STREET ELBOW	1
19	4666425	3/8" x 3 1/2" BLACK STEEL NIPPLE	1
20	3/8" SCH 40 PIPE	3/8" SCH 40 PIPE	22"
21	66287	3/8" x 1/4" BLACK HEX BUSHING	1
22	66359	3/4" BLACK MALL SQ. HEAD PLUG	1
26	69919	3/16" HOSE BARB x 1/4" MNPT	1



### PROPRIETARY AND CONFIDENTIAL

THE INFORMATION CONTAINED IN THIS DRAWING IS THE SOLE PROPERTY OF KEIZER MORRIS INTERNATIONAL. ANY REPRODUCTION IN PART OR AS A WHOLE WITHOUT THE WRITTEN PERMISSION OF KEIZER MORRIS INTERNATIONAL IS PROHIBITED.

### PROJECT

### PARTS BREAKDOWN

### NAME

DANIEL F.

### DATE

Thursday,  
September 24,  
2020 10:16:33 AM

### DESCRIPTION:

DIESEL FUEL TANK 80 GAL PARTS  
BREAKDOWN

### MATERIAL



TM

DWG. NO. KMI3031

PART NO. KMI3130-0

NOT TO SCALE

SHEET 4 OF 4