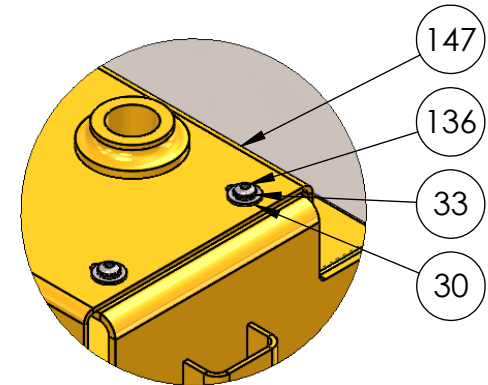
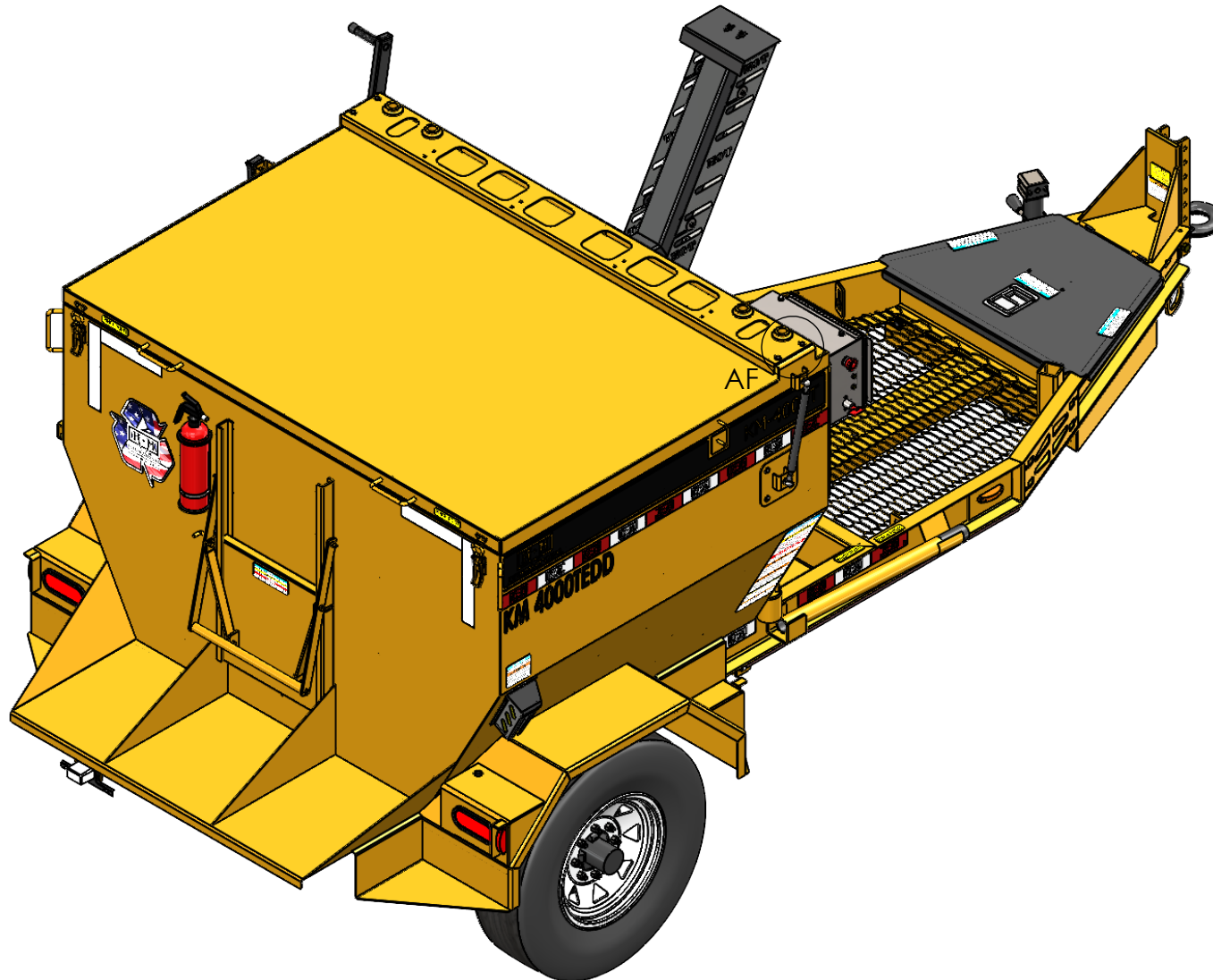



ITEM NO.	PART NUMBER	DESCRIPTION	QTY.
30	1133004	1/4" USS FLAT WASHER	4
33	1133618	1/4" SPLIT LOCK WASHER	4
136	1173754	1/4"-20 X 3/4" (ALLEN HEAD) BUTTON SOCKET CAP SCREW 18-8 SS	4
147	KMI3019-0	LIGHT MOUNT TRUSS ASSEMBLY	1



DETAIL AF
SCALE 1 : 4

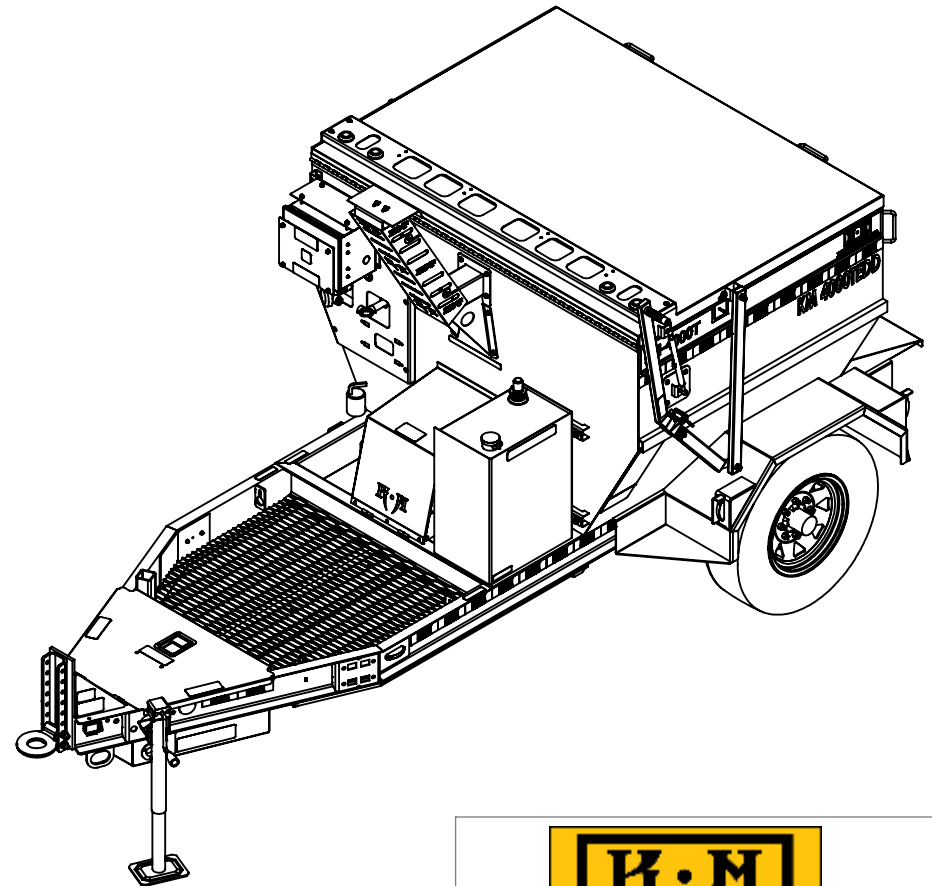
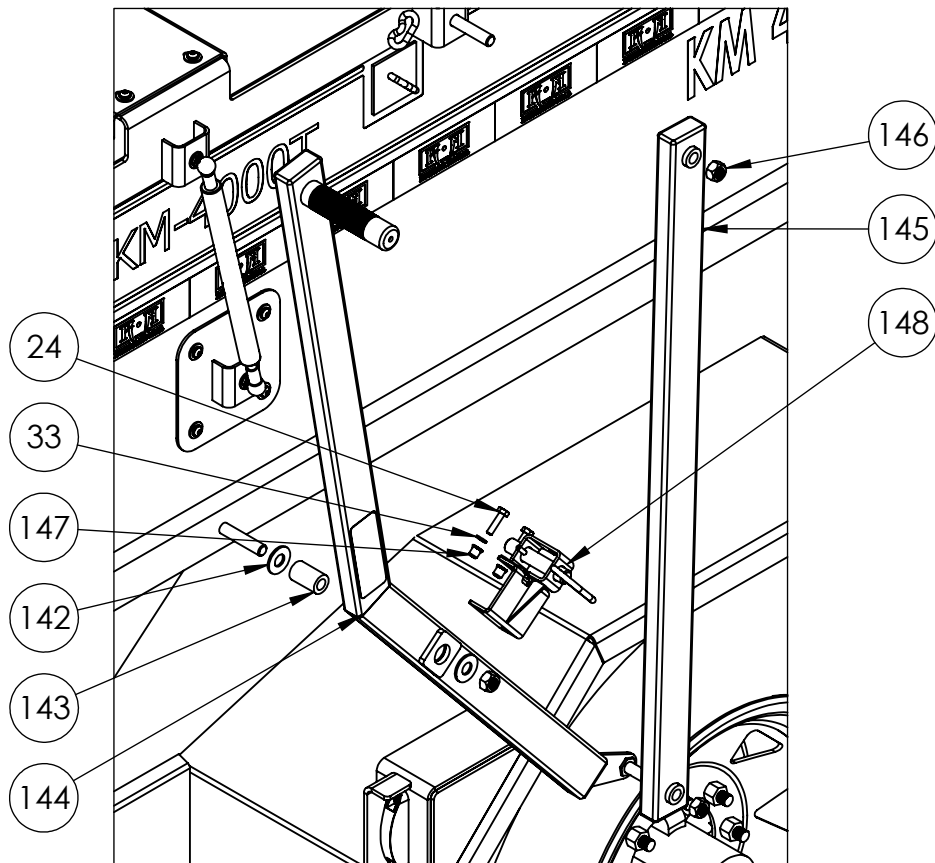
PROPRIETARY AND CONFIDENTIAL THE INFORMATION CONTAINED IN THIS DRAWING IS THE SOLE PROPERTY OF KEIZER MORRIS INTERNATIONAL. ANY REPRODUCTION IN PART OR AS A WHOLE WITHOUT THE WRITTEN PERMISSION OF KEIZER MORRIS INTERNATIONAL IS PROHIBITED.	PROJECT	NAME	DATE	DESCRIPTION: KM 4000 TRAILER
	PARTS BREAKDOWN	DANIEL F.	Monday, July 27, 2020 9:17:47 AM	
	MATERIAL			


TM

DWG. NO.
 PART NO.
 NOT TO SCALE

SHEET 37 OF 41

ITEM NO.	PART NUMBER	DESCRIPTION	QTY.
24	110120304	1/4- 20 x 1" HEX CAP SCREW GR 5	2
33	1133618	1/4" SPLIT LOCK WASHER	2
142	74972	SILICON BRONZE SMALL OD FLAT WASHER	2
143	KMI2836-0	PIVOT TUBE, MACHINED PART 1.4375 LONG	1
144	KMI2879-0	CANTILEVER HANDLE ASSEMBLY LH	1
145	KMI1068-0	LINK ARM, WELDED ASSEMBLY, 4000, 8000	1
146	1137268	1/2-13 TOP LOCK NUT GR C	3
147	RRN25020165D	1/4"-20 .027-.165 LARGE FLANGE RIBBED NUTSERT STEEL	2
148	KMI27590-0	HANDLE SPRING LATCH ASSEMBLY	1



PROPRIETARY AND CONFIDENTIAL

THE INFORMATION CONTAINED IN THIS DRAWING IS THE SOLE PROPERTY OF KEIZER MORRIS INTERNATIONAL. ANY REPRODUCTION IN PART OR AS A WHOLE WITHOUT THE WRITTEN PERMISSION OF KEIZER MORRIS INTERNATIONAL IS PROHIBITED.

PROJECT

**PARTS
BREAKDOWN**

NAME

DANIEL F.

DATE

Monday, July 27,
2020 9:17:47 AM

MATERIAL

DESCRIPTION:

KM 4000 TRAILER
CANTILEVER ARM



TM

DWG. NO.

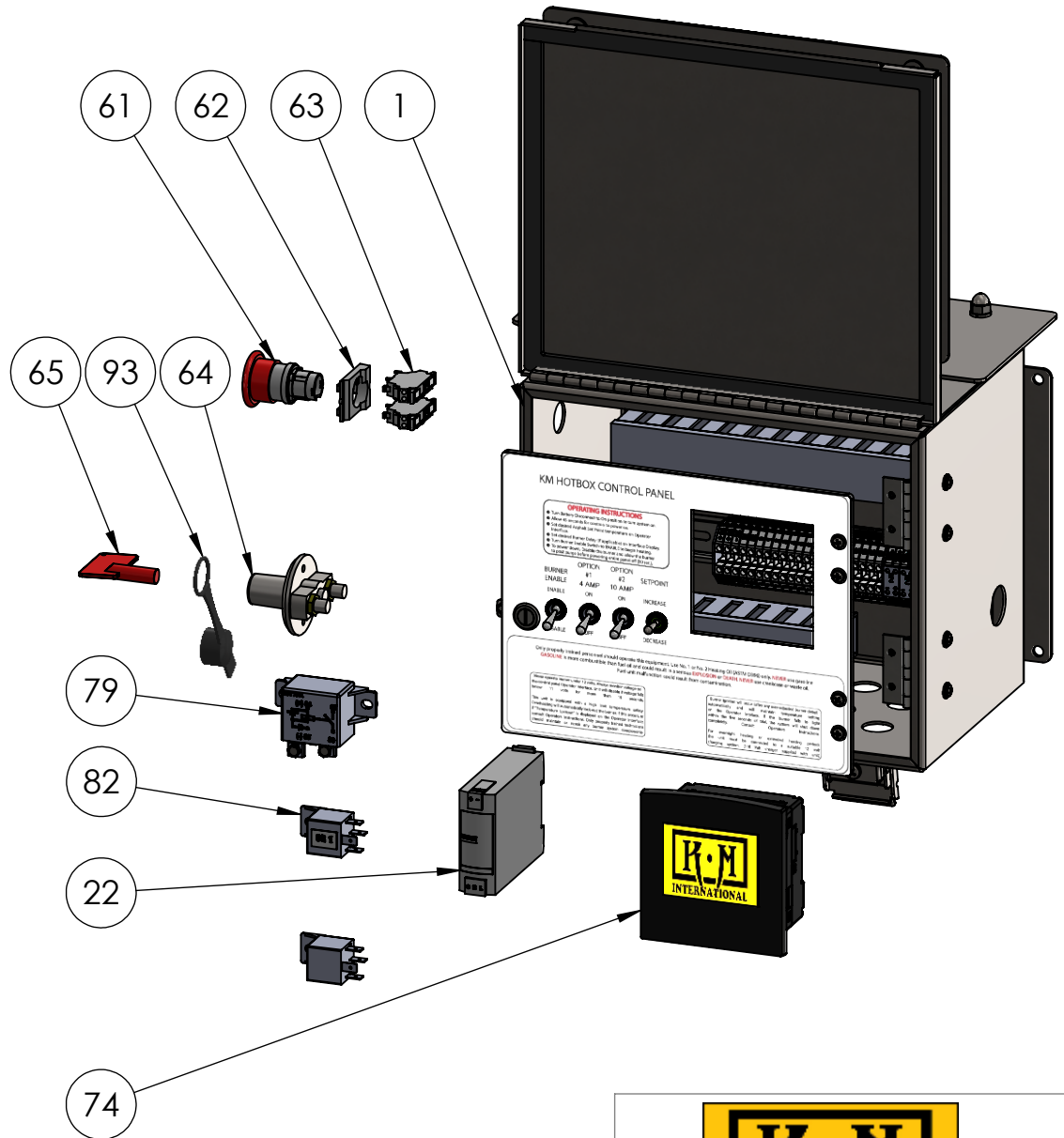
PART NO.

NOT TO SCALE

SHEET 38 OF 41

KM-HB-CP C-2

ITEM NO.	PART NUMBER	DESCRIPTION	QTY.
1	KM-HB-CP (C2)	CONTROL PANEL (C2) - HB DIESEL 12VDC - ASPHALT HEATER PANEL COMPLETE ASSEMBLY	1
22	PSP24-DC12-1	DC CONVERTER 9.5-18VDC IN 24VDC OUT 1A DIN-RAIL PLAS CASE	1
61	ZB5AS844	RED 40MM E-STOP PUSHBUTTON HEAD 22MM TRIGGER AND LATCHING TURN RELEASE	1
62	ZB5AZ009	BODY FIXING COLLAR FOR ELECTRICAL BLOCK, PLASTIC	1
63	ZBE-1025	NC CONTACT BLOCK FOR 22M HEAD, SPRING CLAMP TERMS-SCHNEIDER	2
64	44075	ON/OFF MASTER SWITCH DISCONNECT W/ RED KEY	1
65	44077	SPARE KEY FOR DISCONNECT	1
74	202182P	PLC + HMI 3.5" (PRE-PROGRAMMED)	1
79	75552	AUTOMOTIVE RELAY, 75 AMP	1
82	502068	RELAY FOR BOTH C1 AND C2 LOCATIONS	2
93	44078	WATERPROOF COVER FOR DISCONNECTS	1



PROPRIETARY AND CONFIDENTIAL
THE INFORMATION CONTAINED IN THIS DRAWING IS THE SOLE PROPERTY OF KEIZER MORRIS INTERNATIONAL. ANY REPRODUCTION IN PART OR AS A WHOLE WITHOUT THE WRITTEN PERMISSION OF KEIZER MORRIS INTERNATIONAL IS PROHIBITED.

PROJECT	NAME	DATE
KM 4000/KM 8000 DIESEL	GARY R.	Wednesday, September 9, 2020 3:10:59 PM
MATERIAL		

DESCRIPTION:
KM-HB-CP C-2



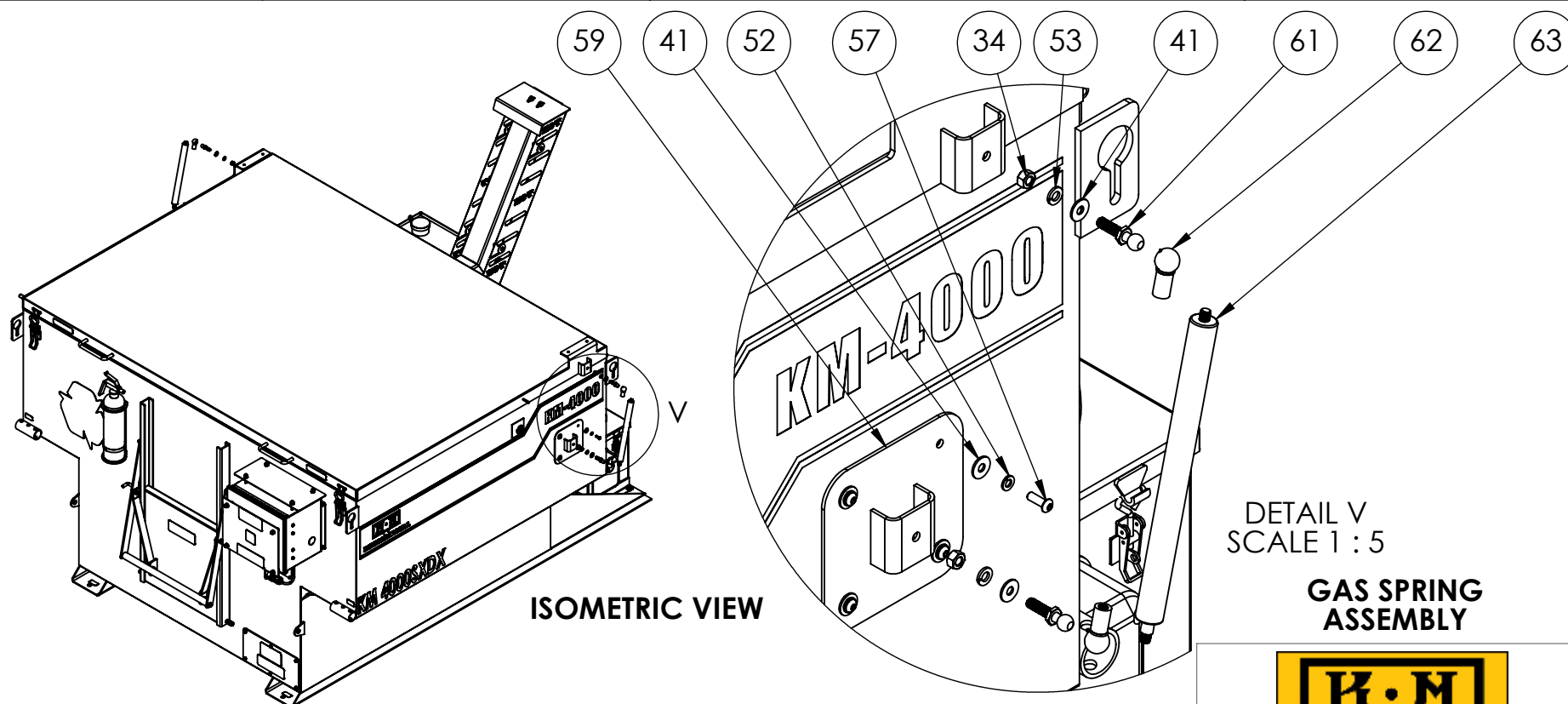
DWG. NO. KM-HB-CP C-2

PART NO. KM-HB-CP C-2

NOT TO SCALE

SHEET 8 OF 8

ITEM NO.	PART NUMBER	DESCRIPTION	QTY.
34	1136304	5/16-18 HEX FINISH NUT GR 5	2
41	1133004	1/4" USS FLAT WASHER	6
52	1133618	1/4" SPLIT LOCK WASHER	4
53	1133620	5/16" SPLIT LOCK WASHER	2
57	1173754	1/4-20 X 3/4 ALLEN HEAD BUTTON SOCKET CAP SCREW S.S.	4
59	KMI2724-0	SHOCK MOUNT PLATE ASSEMBLY	1
61	9512K19	BALL MOUNTING HARDWARE, 13MM ZINC STEEL BALL STUD	2
62	9416K75	13MM STEEL BALL SOCKET W/ M8 THREADED ENDS	2
63	9416K147	GAS SPRING FOR KM 4000/8000 W/OUT MOUNTING SOCKETS	1



ISOMETRIC VIEW

DETAIL V
SCALE 1 : 5

**GAS SPRING
ASSEMBLY**



TM

PROPRIETARY AND CONFIDENTIAL

THE INFORMATION CONTAINED IN THIS DRAWING IS THE SOLE PROPERTY OF KEIZER MORRIS INTERNATIONAL. ANY REPRODUCTION IN PART OR AS A WHOLE WITHOUT THE WRITTEN PERMISSION OF KEIZER MORRIS INTERNATIONAL IS PROHIBITED.

PROJECT

KM 4000 SDX

NAME

Gary R.

DATE

Tuesday, July 14,
2020 9:55:48 AM

MATERIAL

DESCRIPTION:

KM 4000 SDX TRUCK MOUNT ASSEMBLY

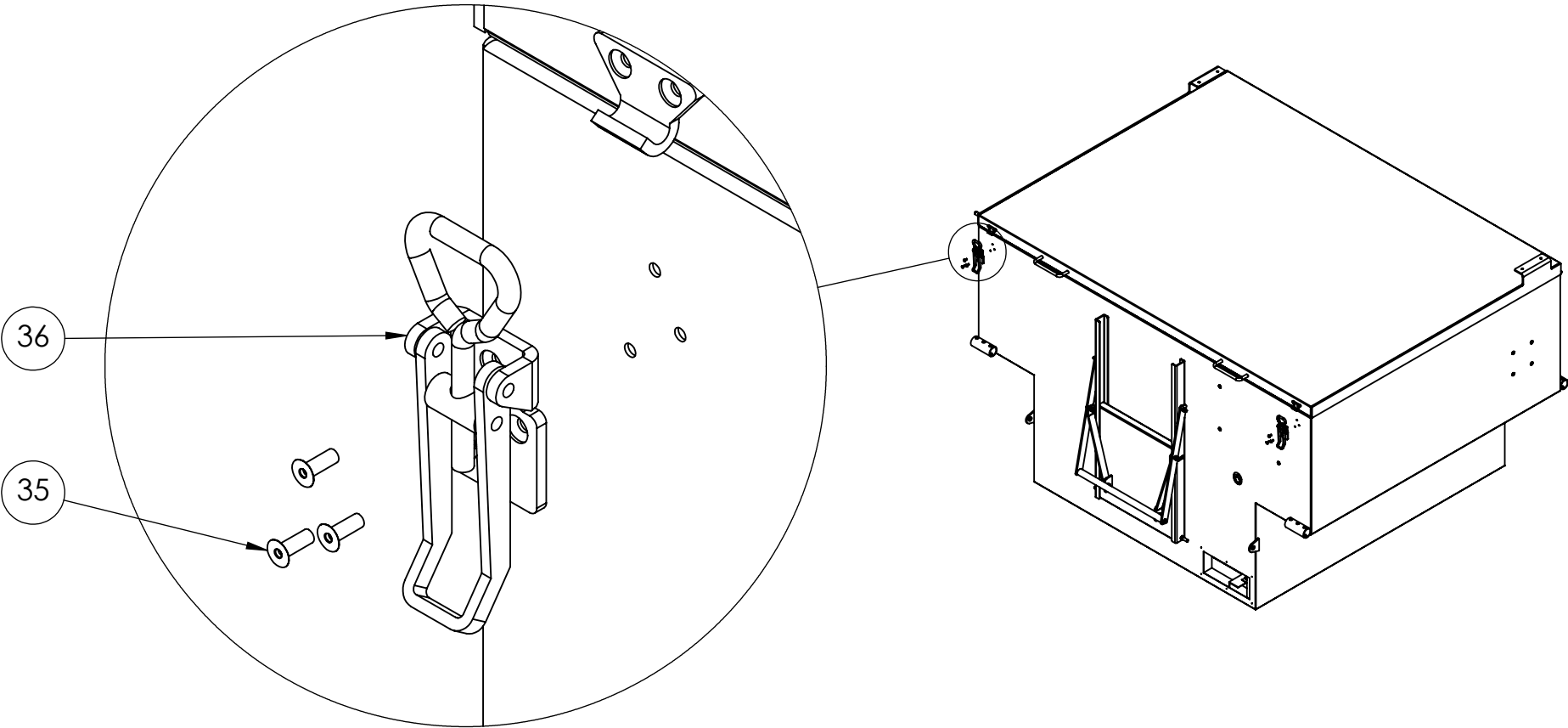
DWG. NO. KMI1074

PART NO. KMI1173-1

NOT TO SCALE


SHEET 64 OF 65

ITEM NO.	PART NUMBER	DESCRIPTION	QTY.
35	0126305	3/16" S.S. COUNTERSUNK RIVET	6
36	703-R-C-GL	ADJUSTABLE HASP (LARGE)	2



DETAIL Y
SCALE 1 : 2

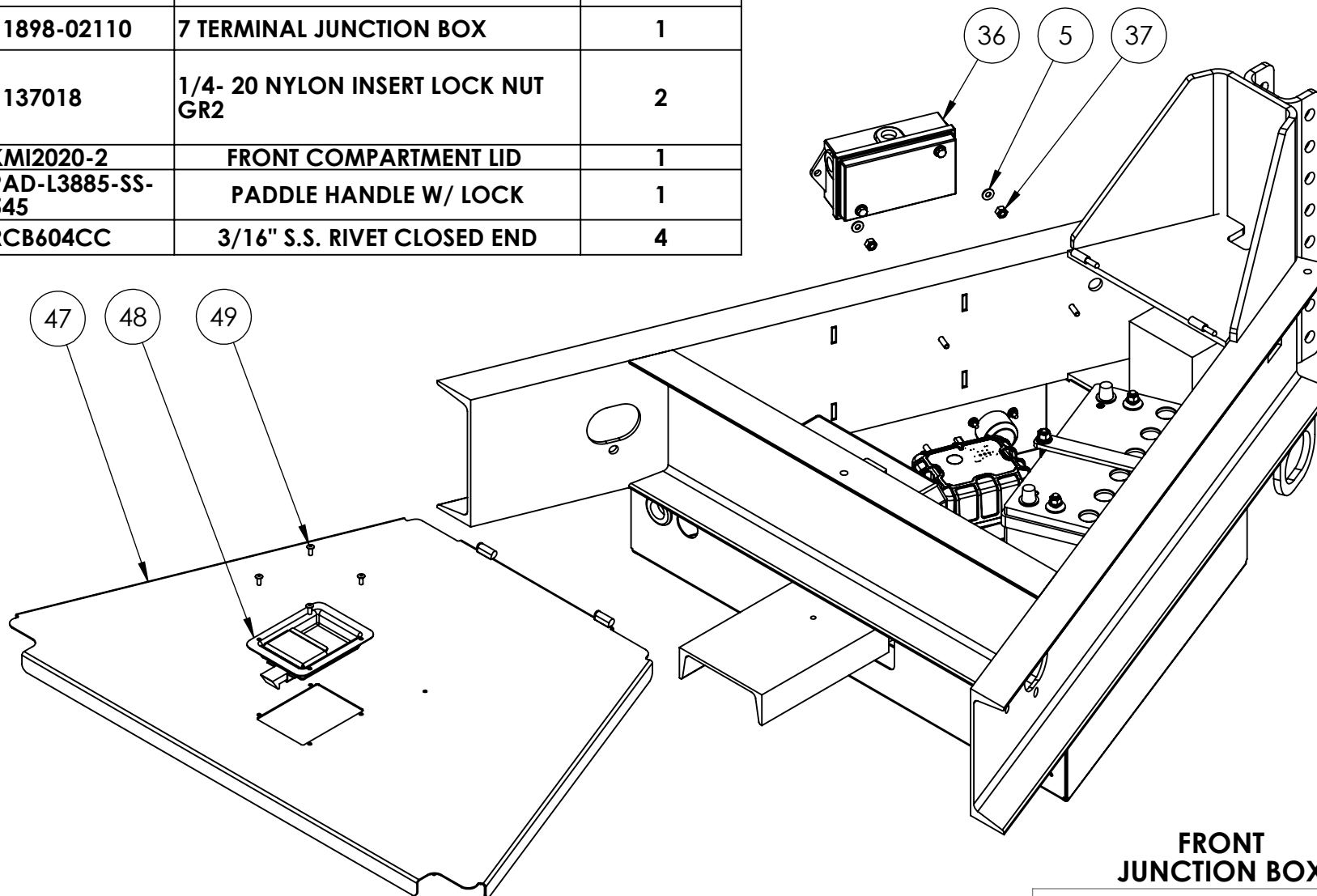
PROPRIETARY AND CONFIDENTIAL THE INFORMATION CONTAINED IN THIS DRAWING IS THE SOLE PROPERTY OF KEIZER MORRIS INTERNATIONAL. ANY REPRODUCTION IN PART OR AS A WHOLE WITHOUT THE WRITTEN PERMISSION OF KEIZER MORRIS INTERNATIONAL IS PROHIBITED.	PROJECT	NAME	DATE	DESCRIPTION: KM 4000 SKID
	KM 4000 SKID	Gary R.	Tuesday, July 14, 2020 9:55:48 AM	
	MATERIAL			


TM

DWG. NO.	
PART NO.	
NOT TO SCALE	SHEET 65 OF 65

FRONT JUNCTION BOX

ITEM NO.	PART NUMBER	DESCRIPTION	QTY.
5	1133078	1/4" SAE FLAT WASHER	2
36	11898-02110	7 TERMINAL JUNCTION BOX	1
37	1137018	1/4- 20 NYLON INSERT LOCK NUT GR2	2
47	KMI2020-2	FRONT COMPARTMENT LID	1
48	PAD-L3885-SS-545	PADDLE HANDLE W/ LOCK	1
49	RCB604CC	3/16" S.S. RIVET CLOSED END	4



FRONT JUNCTION BOX



TM

PROPRIETARY AND CONFIDENTIAL

THE INFORMATION CONTAINED IN THIS DRAWING IS THE SOLE PROPERTY OF KEIZER MORRIS INTERNATIONAL. ANY REPRODUCTION IN PART OR AS A WHOLE WITHOUT THE WRITTEN PERMISSION OF KEIZER MORRIS INTERNATIONAL IS PROHIBITED.

PROJECT	NAME	DATE
PARTS BREAKDOWN	DANIEL F.	Friday, October 29, 2021 1:41:01 PM
MATERIAL		

DESCRIPTION:
KM 4000, 8000 FRONT COMPARTMENT PARTS BREAKDOWN

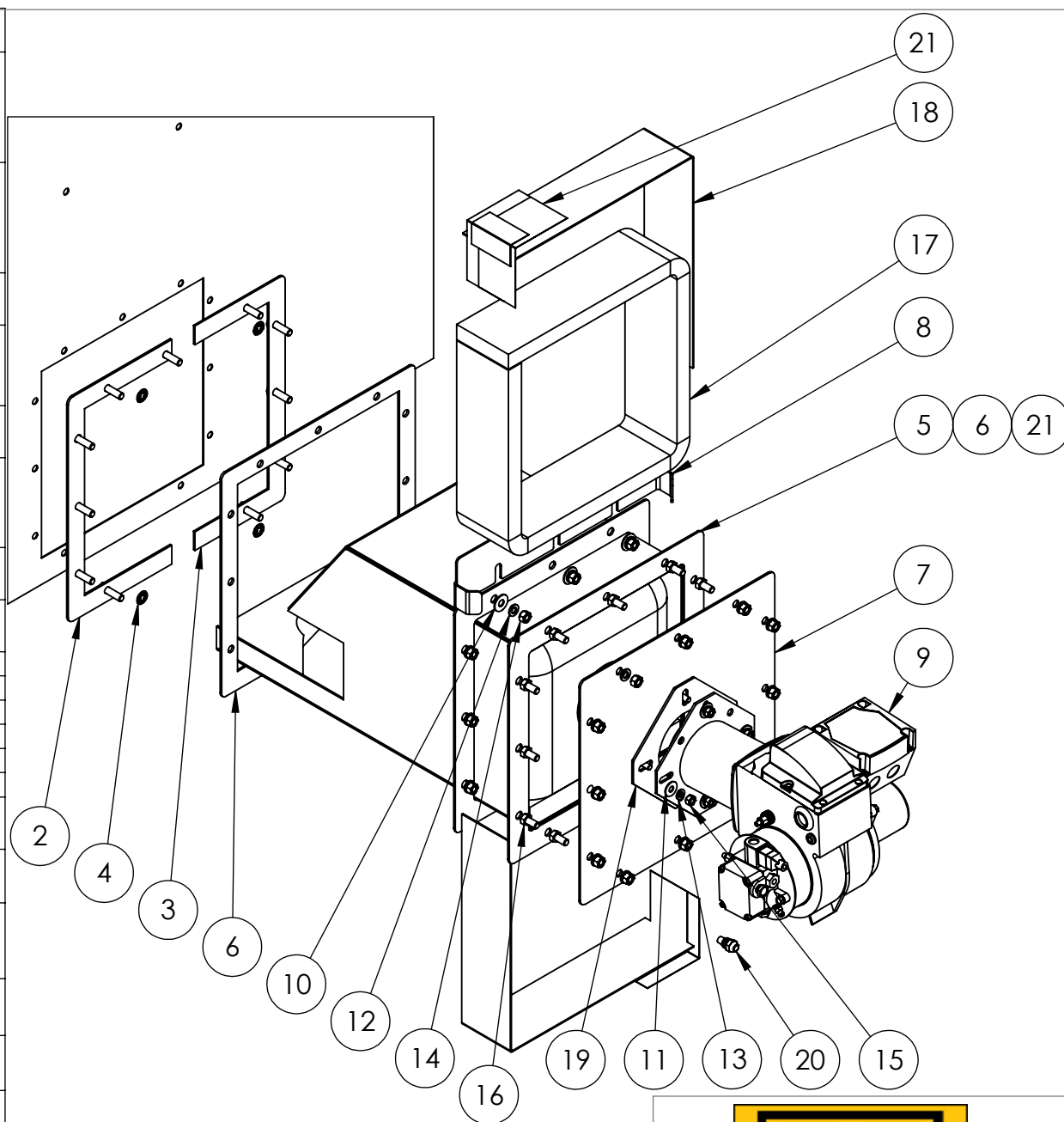
DWG. NO. KMI2965

PART NO. KMI3064-0

NOT TO SCALE

SHEET 2 OF 7

ITEM NO.	PART NUMBER	DESCRIPTION	QTY.
2	KMI2497-0	COMBUSTION BOX INSIDE MOUNTING FLANGE HALF A ASSEMBLY, 4000/8000 DIESEL, WITH BOLTS WELDED IN	1
3	KMI2498-0	COMBUSTION BOX INSIDE MOUNTING FLANGE HALF B ASSEMBLY, 4000/8000 DIESEL, WITH BOLTS WELDED IN	1
4	0162848	3/8"ID X .781"OD, ZINC PUSHNUT BOLT RETAINER	4
5	KMI3073-0	COMBUSTION BOX WITH GASKET AND TAPE KM4000 DIESEL	1
6	KP-503	COMBUSTION BOX MOUNT GASKET	1
7	KMI1034-0	DIESEL BURNER MOUNTING PLATE ASSEMBLY, BURNER TO COMBUSTION BOX, PAINTED	1
8	KMI2180-2	BURNER COVER WEAR PLATE, 4000/8000	1
9	KEM101	BECKETT BURNER 14 VOLT (DIESEL) ADC	1
10	1133008	3/8" USS FLAT WASHER	3
11	1133006	5/16" USS FLAT WASHER	4
12	1133622	3/8" SPLIT LOCK WASHER	23
13	1133620	5/16" SPLIT LOCK WASHER	4
14	1136306	3/8-16 HEX FINISH NUT GR 5	23
15	1136304	5/16-18 HEX FINISH NUT GR 5	4
16	110120342	3/8-16 X 3/4" HEX CAP SCREW GR 5	12
17	764827061	4"W X 1"TH X 25 LF "CUT" UNIFRAX STRIP BLANKET X 8 LB	52"
18	KMI1884-2	COMBUSTION CHAMBER GUARD 4000XXDX, 2PCS.= 1 GUARD	2
19	31653	FLANGE MOUNTING GASKET (BURNER TO HOTBOX)	1
20	21288	BURNER NOZZLE FOR ADC BURNER .60X80B DLVN SLD	1
21	915245	3M 433 SILVER HIGH TEMPERATURE STAINLESS STEEL/ ACRYLIC ADHESIVE FOIL TAPE	40"



PROPRIETARY AND CONFIDENTIAL THE INFORMATION CONTAINED IN THIS DRAWING IS THE SOLE PROPERTY OF KEIZER MORRIS INTERNATIONAL. ANY REPRODUCTION IN PART OR AS A WHOLE WITHOUT THE WRITTEN PERMISSION OF KEIZER MORRIS INTERNATIONAL IS PROHIBITED.	PROJECT	NAME	DATE	DESCRIPTION: KM 4000 COMBUSTION BOX PARTS BREAKDOWN
	PARTS BREAKDOWN	DANIEL F.	Friday, October 9, 2020 8:18:04 AM	
	MATERIAL			



TM

DWG. NO. KMI2973

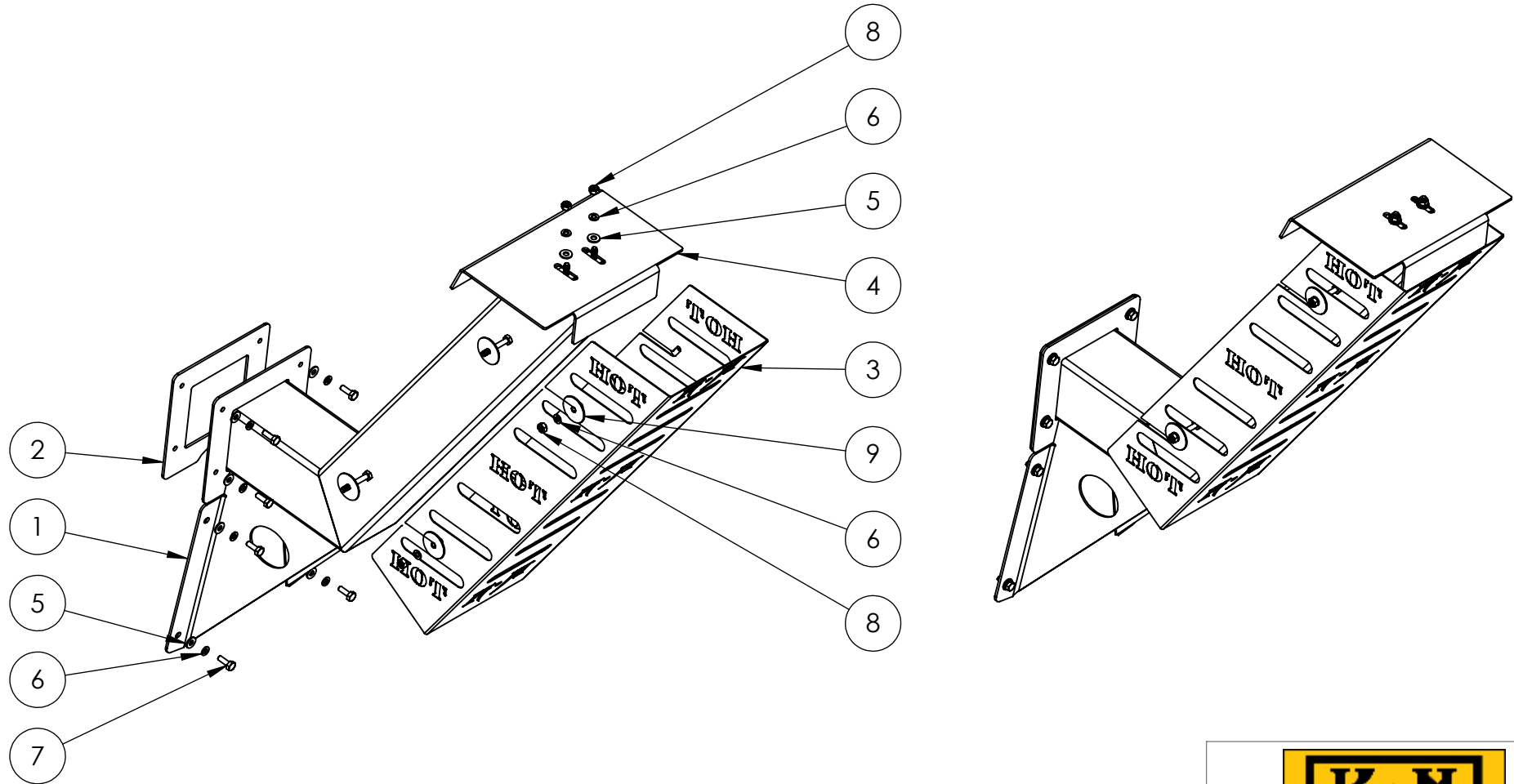
PART NO. KMI3072-0

NOT TO SCALE

SHEET 2 OF 2

DIESEL CHIMNEY PARTS BREAKDOWN

ITEM NO.	PART NUMBER	DESCRIPTION	QTY.
1	KMI2517-0	DIESEL CHIMNEY BOLT ON	1
2	KP-584	DIESEL CHIMNEY GASKET	1
3	KMI3090-0	CHIMNEY HEAT SHIELD PAINTED	1
4	KMI0529-0	CHIMNEY CAP DIESEL	1
5	1133078	1/4" SAE FLAT WASHER	10
6	1133618	1/4" SPLIT LOCK WASHER	14
7	110120302	1/4- 20 x 3/4" HEX CAP SCREW GR 5	8
8	70710	1/4-20 HEX FINISH NUT 18-8 SS	6
9	0172787	1/4" x 1 1/2" FENDER WASHER 18-8 SS	4



PROPRIETARY AND CONFIDENTIAL

THE INFORMATION CONTAINED IN THIS DRAWING IS THE SOLE PROPERTY OF KEIZER MORRIS INTERNATIONAL. ANY REPRODUCTION IN PART OR AS A WHOLE WITHOUT THE WRITTEN PERMISSION OF KEIZER MORRIS INTERNATIONAL IS PROHIBITED.

PROJECT

**PARTS
BREAKDOWN**

NAME

DANIEL F.

DATE

Friday, May 28,
2021 12:45:09 PM

DESCRIPTION:

DIESEL CHIMNEY PARTS BREAKDOWN

MATERIAL



TM

DWG. NO. KMI2982

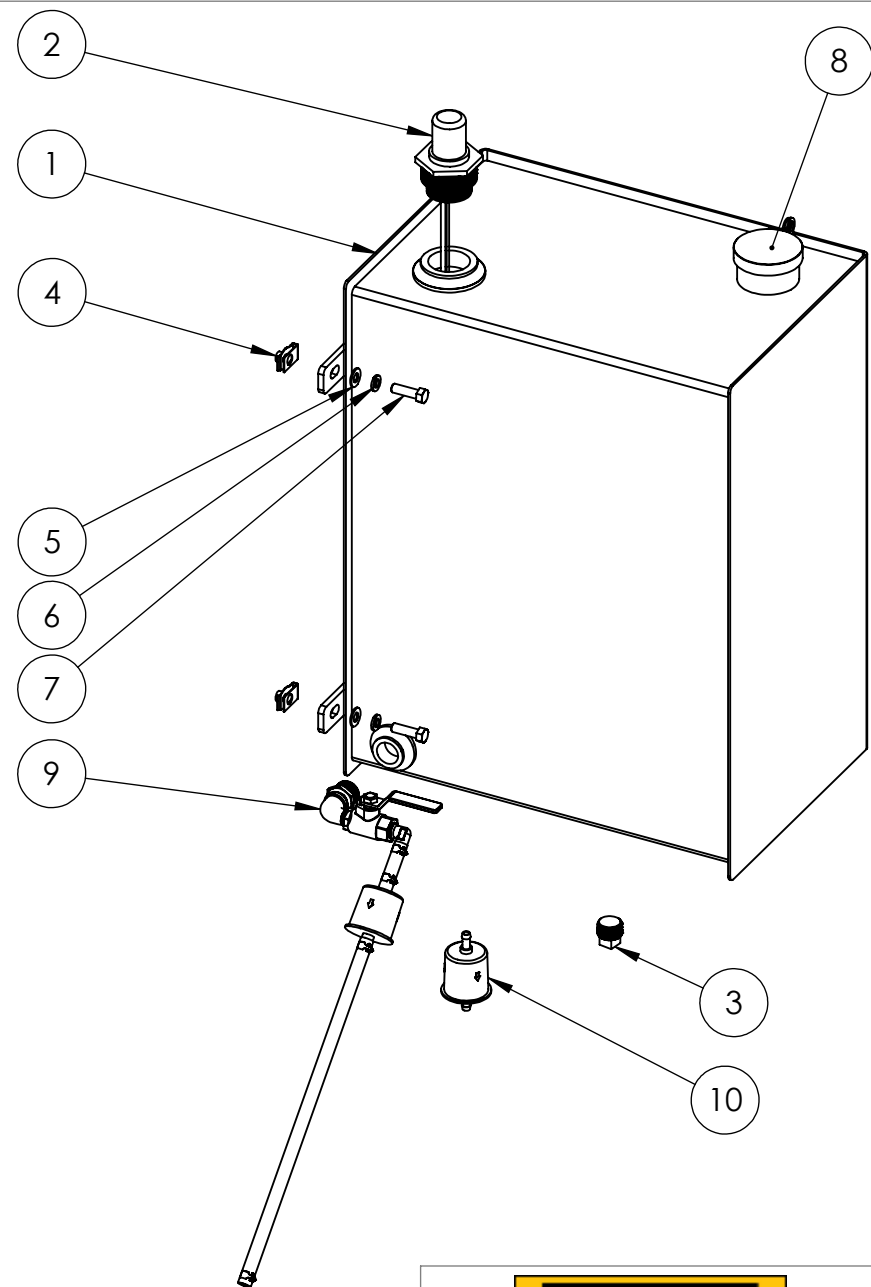
PART NO. KMI3081-0

NOT TO SCALE

SHEET 2 OF 2

KM 4000T DIESEL FUEL TANK CHANGE 7-28-2022

ITEM NO.	PartNo	DESCRIPTION	DrawingNumber	QTY.
1	KMI1867-0	FUEL TANK, 22 GAL	KMI1768	1
2	14490A18 REV. 6	GAUGE KING 1-1/2" TO 2" OPENING - DEPTH 18"		1
3	66359	3/4" BLACK MALL SQ. HEAD PLUG		1
4	1137939	3/8"-16 EXTRUDED CLIP U NUT	.375_16 EXTRUDED CLIP U NUT	4
5	1133082	3/8" SAE FLAT WASHER		4
6	1133622	3/8" SPLIT LOCK WASHER		4
7	110120345	3/8-16 x 1 1/4" HEX CAP SCREW GR 5		4
8	211008	FILL CAP 2.593 VENTED W/LUG		1
9	KMI3494-0	FUEL SUPPLY PLUMBING ASSEMBLY DIESEL KM4000/KM8000	KMI3395	1
10	3972	INLINE FUEL FILTER	INLINE FUEL FILTER 3972 NAPA	1



PROPRIETARY AND CONFIDENTIAL

THE INFORMATION CONTAINED IN THIS DRAWING IS THE SOLE PROPERTY OF KEIZER MORRIS INTERNATIONAL. ANY REPRODUCTION IN PART OR AS A WHOLE WITHOUT THE WRITTEN PERMISSION OF KEIZER MORRIS INTERNATIONAL IS PROHIBITED.

PROJECT

**PARTS
BREAKDOWN**

NAME

DANIEL F.

DATE

Monday,
December 12,
2022 11:27:00 AM

DESCRIPTION:

KM 4000T DIESEL FUEL TANK PARTS
BREAKDOWN CHANGE 7-28-2022

MATERIAL



TM

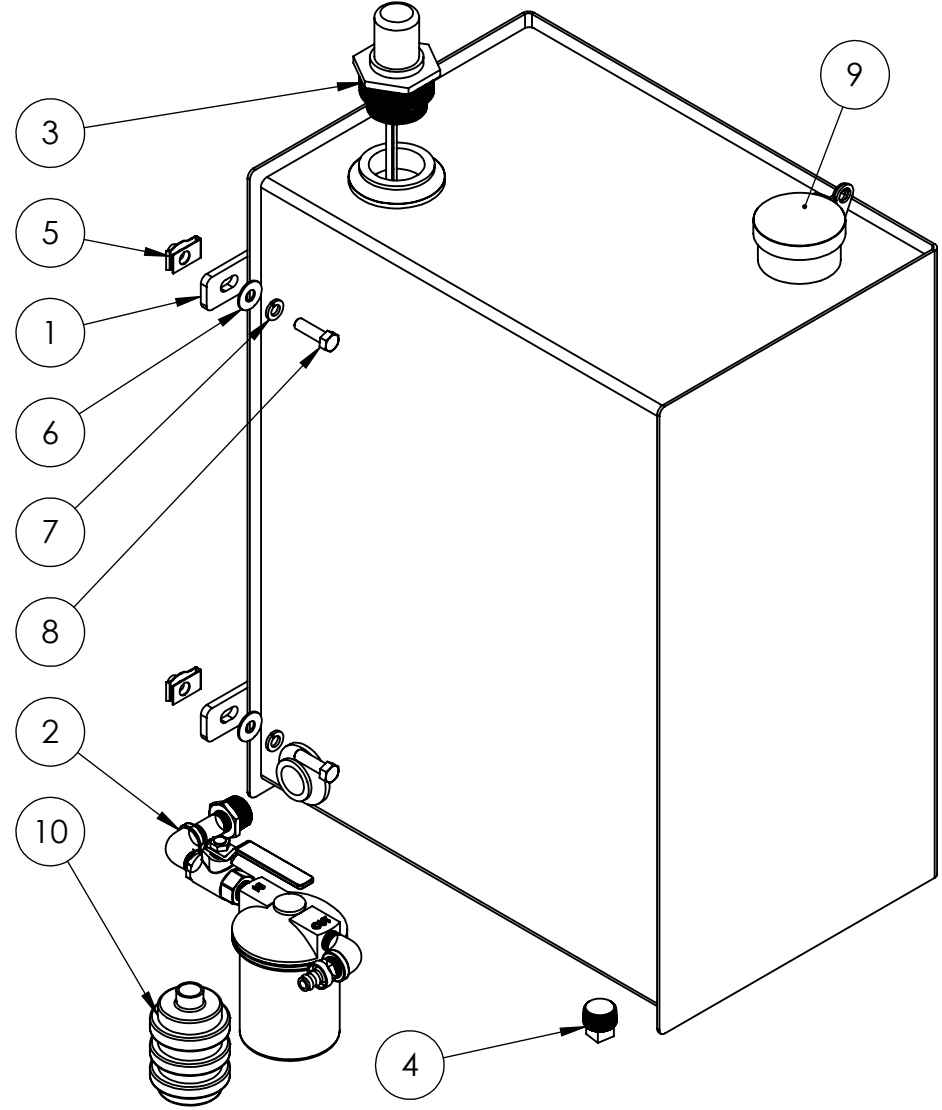
DWG. NO. KMI2993

PART NO. KMI3092-0

NOT TO SCALE

SHEET 3 OF 3

KM 4000T DIESEL FUEL TANK			
ITEM NO.	PART NUMBER	DESCRIPTION	QTY.
1	KMI0508-1/100002040 REV B	FUEL TANK, 22 GAL	1
2	KMI3085-0	FUEL SUPPLY PLUMBING ASSEMBLY KM4000 DIESEL TRAILER / SKID	1
3	14490A18 REV. 6	GAUGE KING 1-1/2" TO 2" OPENING - DEPTH 18"	1
4	66359	3/4" BLACK MALL SQ. HEAD PLUG	1
5	1137939	3/8"-16 EXTRUDED CLIP U NUT	4
6	1133008	3/8" USS FLAT WASHER	4
7	1133622	3/8" SPLIT LOCK WASHER	4
8	110120345	3/8-16 x 1 1/4" HEX CAP SCREW GR 5	4
9	211008	FILL CAP 2.593 VENTED W/LUG	1
10	1A-30	FUEL OIL FILTER REPLACEMENT ELEMENT	1



PROPRIETARY AND CONFIDENTIAL
 THE INFORMATION CONTAINED IN THIS
 DRAWING IS THE SOLE PROPERTY OF
 KEIZER MORRIS INTERNATIONAL. ANY
 REPRODUCTION IN PART OR AS A WHOLE
 WITHOUT THE WRITTEN PERMISSION OF
 KEIZER MORRIS INTERNATIONAL IS
 PROHIBITED.

PROJECT	NAME	DATE
PARTS BREAKDOWN	DANIEL F.	Friday, September 11, 2020 8:49:39 AM
MATERIAL		

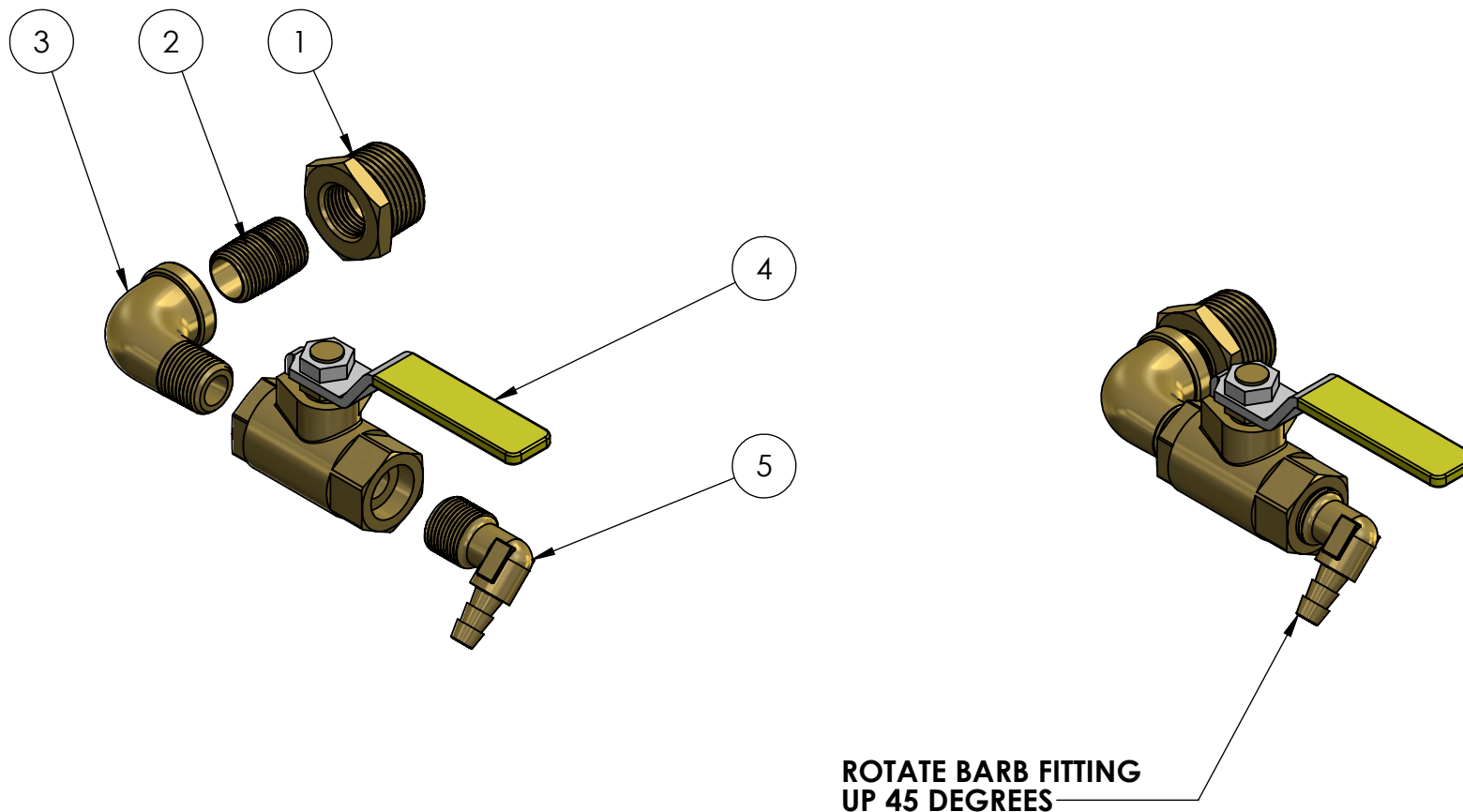
DESCRIPTION:
 KM 4000T DIESEL FUEL TANK PARTS
 BREAKDOWN


TM

DWG. NO. KM12993
 PART NO. KMI3092-0
 NOT TO SCALE


SHEET 2 OF 2

ITEM NO.	PartNo	DESCRIPTION	QTY.
1	110-EC	3/4" x 3/8" BRASS HEX BUSHING	1
2	112-C	3/8" BRASS CLOSE NIPPLE	1
3	116-C	3/8" 90° BRASS STREET ELBOW	1
4	BV2103-C	3/8" FULL PORT BALL VALVE	1
5	139-5C	5/16" HOSE BARB X 3/8" MNPT 90 DEG ELBOW BRASS	1



CHANGE REQUEST 7-28-2022

<div>PROPRIETARY AND CONFIDENTIAL</div> <div>THE INFORMATION CONTAINED IN THIS DRAWING IS THE SOLE PROPERTY OF KEIZER MORRIS INTERNATIONAL. ANY REPRODUCTION IN PART OR AS A WHOLE WITHOUT THE WRITTEN PERMISSION OF KEIZER MORRIS INTERNATIONAL IS PROHIBITED.</div>	PROJECT	NAME	DATE	DESCRIPTION: FUEL SUPPLY PLUMBING ASSEMBLY DIESEL KM4000/KM8000
	CP/FUEL PLUMBING	GARY R.	Monday, December 12, 2022 8:24:01 AM	
	MATERIAL	BRASS		



TM

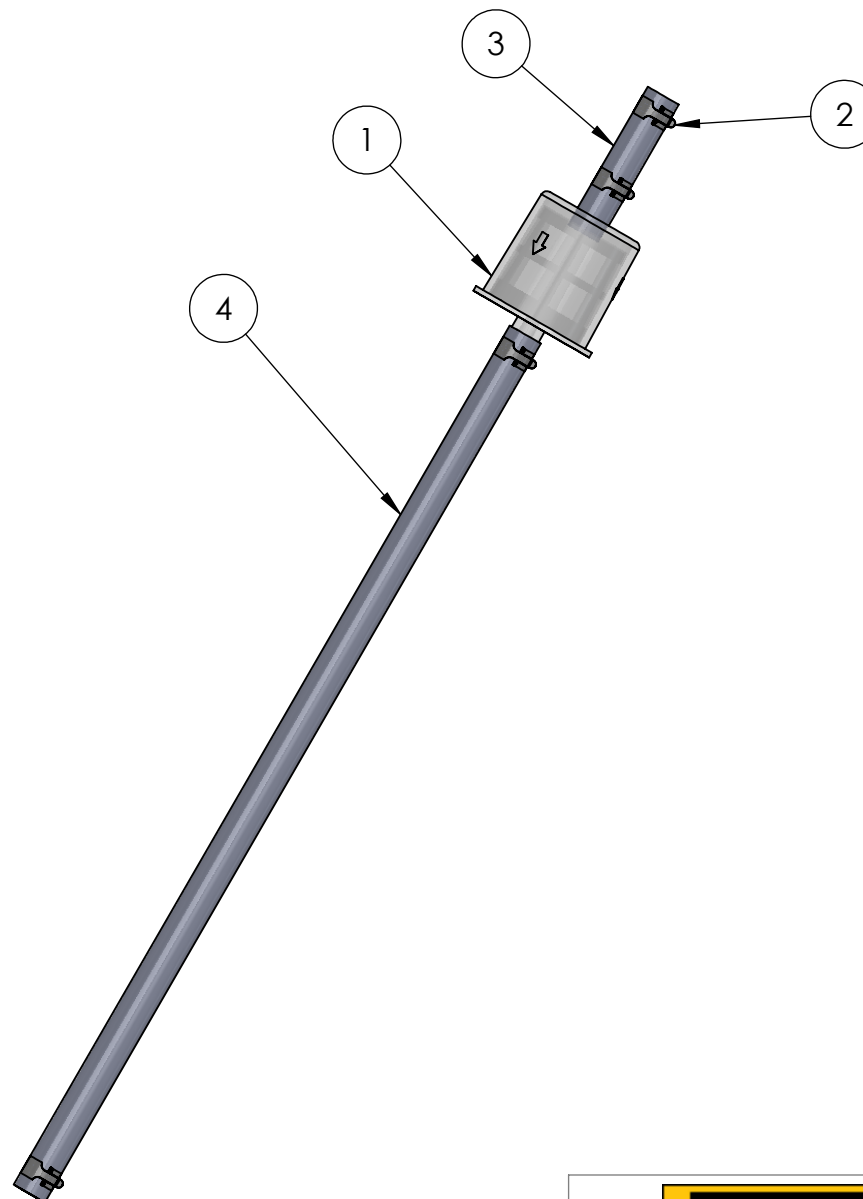
DWG. NO. KMI3395

PART NO. KMI3494-0

NOT TO SCALE


SHEET 2 OF 3

ITEM NO.	PART NUMBER	DESCRIPTION	QTY.
1	INLINE FUEL FILTER 3972 NAPA	INLINE FUEL FILTER	1
2	7329K39_C onstant-Tension Spring-Band Clamps (1)	9/16" BLACK PHOSPHATE PLATED HEAT TREATED HOSE CLAMP	4
3	FUEL HOSE .3125 ID X 2.5 L	FUEL HOSE 5/16" ID X 2 1/2" LONG	1
4	FUEL HOSE .3125 ID X 15.5 L	FUEL HOSE 5/16" ID X 15 1/2"	1



FUEL FILTER AND HOSE

CHANGE REQUEST 7-28-2022

<div>PROPRIETARY AND CONFIDENTIAL</div> <div>THE INFORMATION CONTAINED IN THIS DRAWING IS THE SOLE PROPERTY OF KEIZER MORRIS INTERNATIONAL. ANY REPRODUCTION IN PART OR AS A WHOLE WITHOUT THE WRITTEN PERMISSION OF KEIZER MORRIS INTERNATIONAL IS PROHIBITED.</div>	PROJECT	NAME	DATE	DESCRIPTION: FUEL SUPPLY PLUMBING ASSEMBLY DIESEL KM4000/KM8000 (FUEL FILTER AND HOSE)	<div>TM</div>
	CP/FUEL PLUMBING	GARY R.	Monday, December 12, 2022 8:24:01 AM		
	MATERIAL BRASS				
					DWG. NO. KMI3395
					PART NO. KMI3494-0
					NOT TO SCALE
					SHEET 3 OF 3