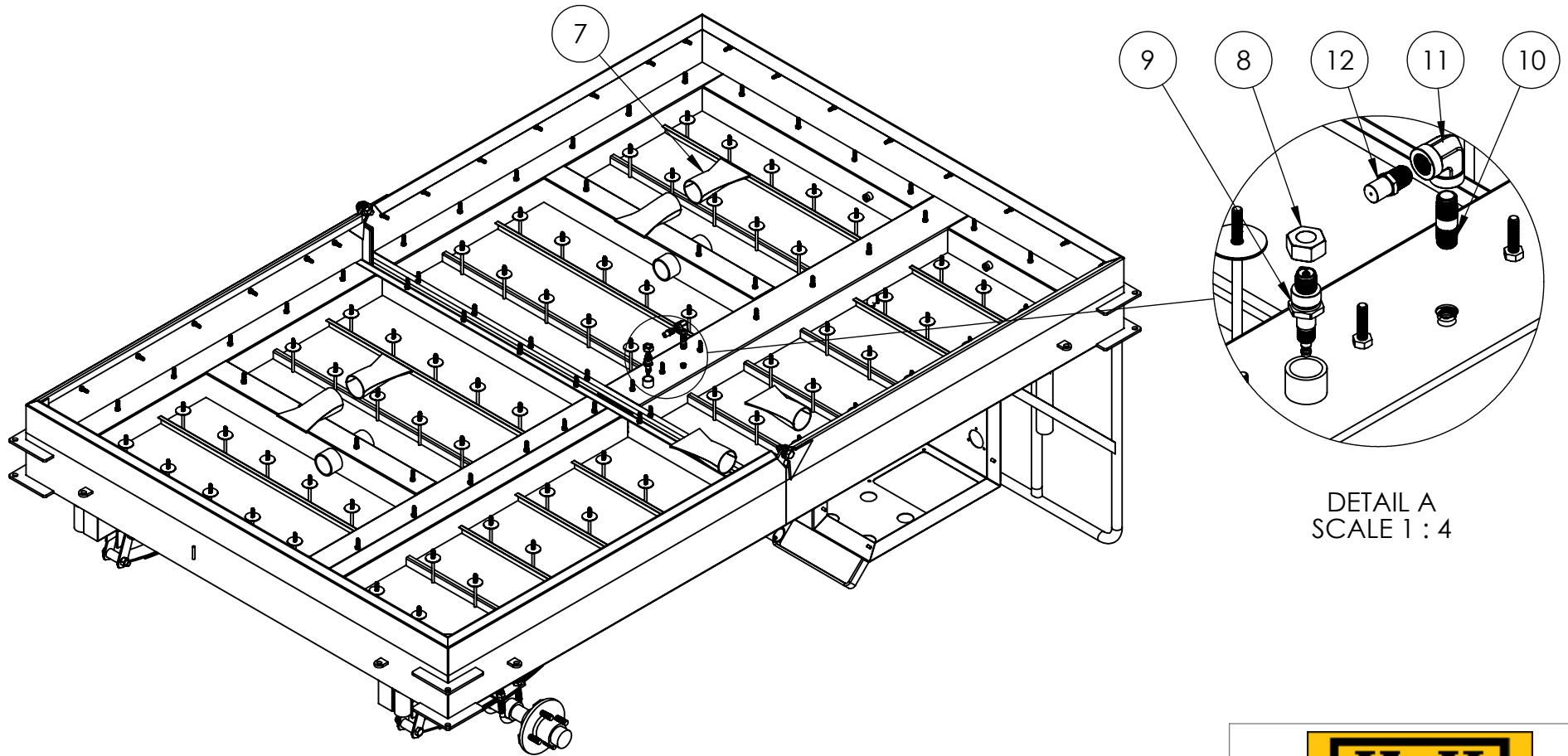


# FLAME ARRESTER, SPARK PLUG, ORFICE

ITEM NO.	PART NUMBER	DESCRIPTION	QTY.
7	KMI0377-0	4-40/48 FLAME ARRESTER	6
8	KMI1169-0	BRASS SPARK PLUG NUT WITH OUTSOURCED MACHINING	1
9	RN12YC	SPARK PLUG 404_CHAMPION (RN12YC)	1
10	69870	1/4" X 1 1/2" BRASS NIPPLE	1
11	100-B	1/4" BRASS 90° ELBOW	1
12	24-078S-51	LB 2-16/2-18 PILOT ORFICE	1



## PROPRIETARY AND CONFIDENTIAL

THE INFORMATION CONTAINED IN THIS DRAWING IS THE SOLE PROPERTY OF KEIZER MORRIS INTERNATIONAL. ANY REPRODUCTION IN PART OR AS A WHOLE WITHOUT THE WRITTEN PERMISSION OF KEIZER MORRIS INTERNATIONAL IS PROHIBITED.

## PROJECT

KM 4-40/48

## NAME

DANIEL F.

## DATE

Wednesday,  
September 23,  
2020 11:50:53 AM

## DESCRIPTION:

KM 4-40/48 ASSEMBLY

## MATERIAL



TM

DWG. NO.

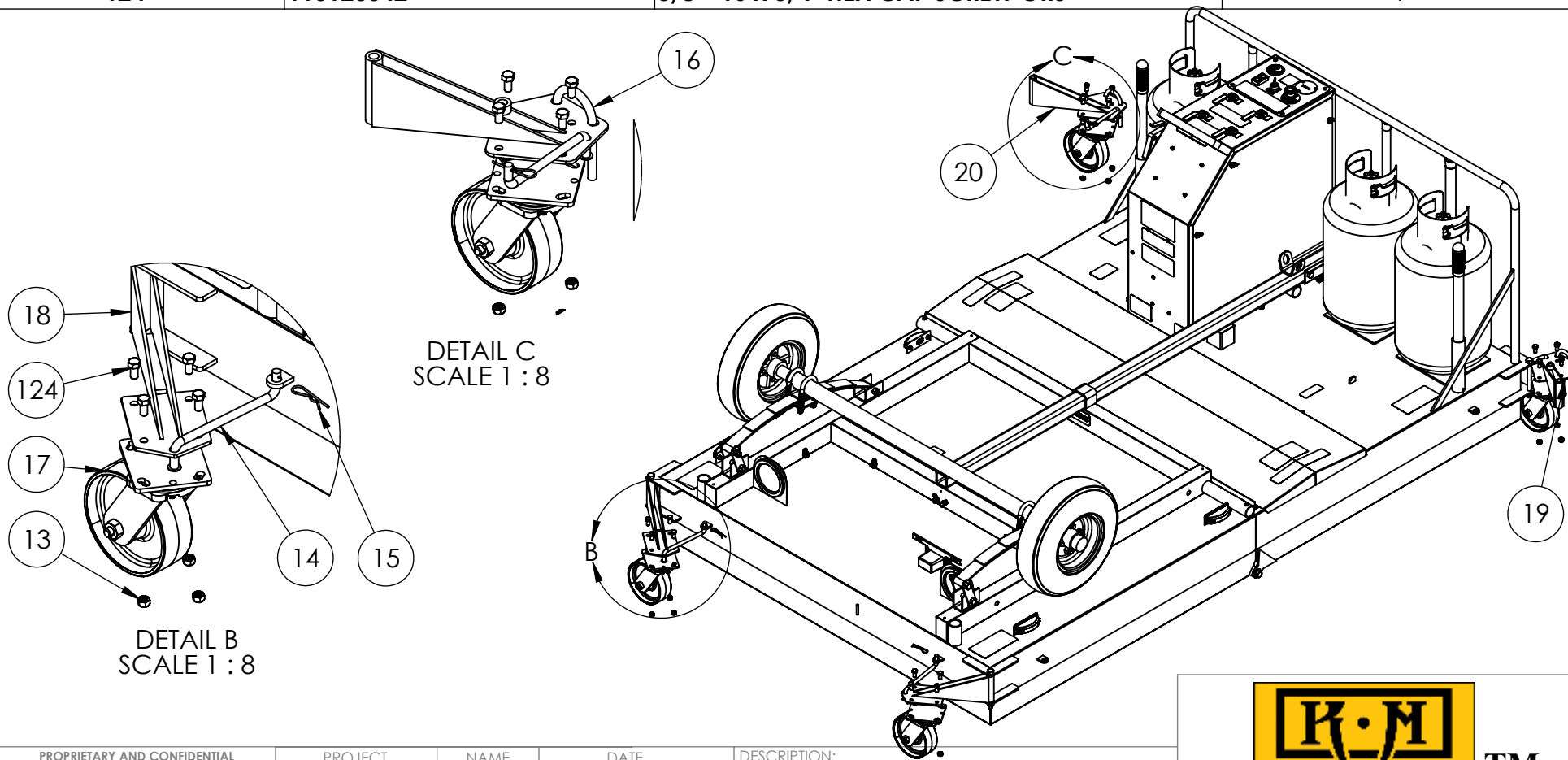
PART NO.

NOT TO SCALE

SHEET 3 OF 5

## CASTERS

ITEM NO.	PART NUMBER	DESCRIPTION	QTY.
13	1137264	3/8-16 TOP LOCK NUT	4
14	KMI0165-0	CASTER PIN S TYPE	1
15	45287	.093" WIRE X 2 1/2" L HAIR COTTER PIN (3/8" - 3/4" SHAFT SIZE)	1
16	KMI0166-0	7/16" U-PIN FOR LOCKING CASTER	1
17	CW62SS-SLB-S	6" STEEL SWIVEL CASTERS W/BRAKE (4-40/48)	1
18	KMI1547-0	CASTER BRACKET NON-LOCKING (ZONE 3 & 4)	2
19	KMI1017-1-L	CASTER BRACKET ZONE 1	1
20	KMI1018-1-R	CASTER BRACKET ZONE 2	1
124	110120342	3/8"- 16 x 3/4" HEX CAP SCREW GR5	4



### PROPRIETARY AND CONFIDENTIAL

THE INFORMATION CONTAINED IN THIS DRAWING IS THE SOLE PROPERTY OF KEIZER MORRIS INTERNATIONAL. ANY REPRODUCTION IN PART OR AS A WHOLE WITHOUT THE WRITTEN PERMISSION OF KEIZER MORRIS INTERNATIONAL IS PROHIBITED.

### PROJECT

**KM 4-40/48**

### NAME

DANIEL F.

### DATE

Wednesday,  
September 23,  
2020 11:50:53 AM

### DESCRIPTION:

KM 4-40/48 ASSEMBLY

MATERIAL



**TM**

DWG. NO.

PART NO.

NOT TO SCALE

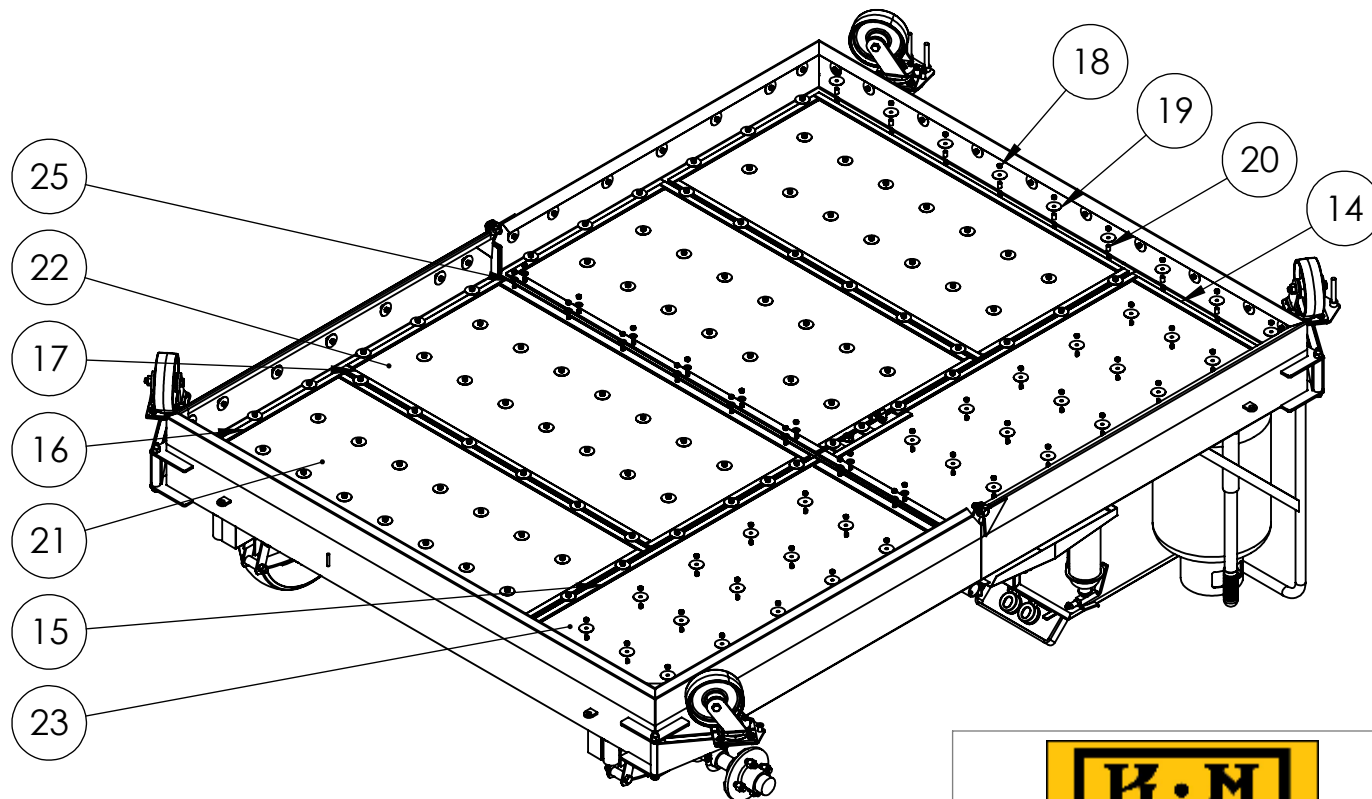
SHEET 4 OF 5

## BLANKET AND BLANKET FRAMES

ITEM NO.	PART NUMBER	DESCRIPTION	QTY.
14	KMI2565-0	BLANKET FRAME ZONE 2, FOR 4-40 / 4-48 IR, HEAT BLACK	1
15	KMI2576-0	BLANKET FRAME ZONE 4, FOR 4-40 / 4-48 IR, HEAT BLACK	1
16	KMI3107-0	BLANKET FRAME ZONE 1 CORNER, ZONE 3 CORNER, FOR 4-48 IR, HEAT BLACK	2
17	KMI3108-0	BLANKET FRAME ZONE 1 MIDDLE, ZONE 3 MIDDLE, FOR 4-48 IR, HEAT BLACK	2
18	70710	1/4-20 HEX FINISH NUT 18-8 SS	220
19	0172787	1/4" x 1 1/2" FENDER WASHER 18-8 SS	202
20	563398278	1/4"- 20 BUSHING FOR PERIMETERS (PLAIN, COLD ROLLED STEEL BUSHING)	42
21	KMI3117-0	CERAMIC BLANKET FOR ZONE 1 OR 3 CORNER PIECE - 46.75" X 23.25" (UNIT A)	2
22	KMI3118-0	CERAMIC BLANKET FOR ZONE 1 OR 3 MIDDLE - 46.75" X 24" (UNIT B)	2
23	KMI3116-0	CERAMIC BLANKET FOR ZONE 2 OR 4 - 47.25" X 23.75" (UNIT C)	2
25	1133004	1/4" USS FLAT WASHER	18
26	KMI3123-0	COMPLETE SET OF BLANKETS FOR ALL ZONES OF KM 4-48, CUT TO FIT ** NOTE: PERIMETERS NOT INCLUDED	1

26

THE COMPLETE SET  
OF BLANKET  
INCLUDES ITEM  
NUMBERS 21, 22, 23



**PROPRIETARY AND CONFIDENTIAL**

THE INFORMATION CONTAINED IN THIS DRAWING IS THE SOLE PROPERTY OF KEIZER MORRIS INTERNATIONAL. ANY REPRODUCTION IN PART OR AS A WHOLE WITHOUT THE WRITTEN PERMISSION OF KEIZER MORRIS INTERNATIONAL IS PROHIBITED.

**PROJECT**

4-48

**NAME**

GARY R.

**DATE**

Thursday,  
September 24,  
2020 9:10:03 AM

**DESCRIPTION:**

4-48 ASSEMBLY

**MATERIAL**



TM

DWG. NO.

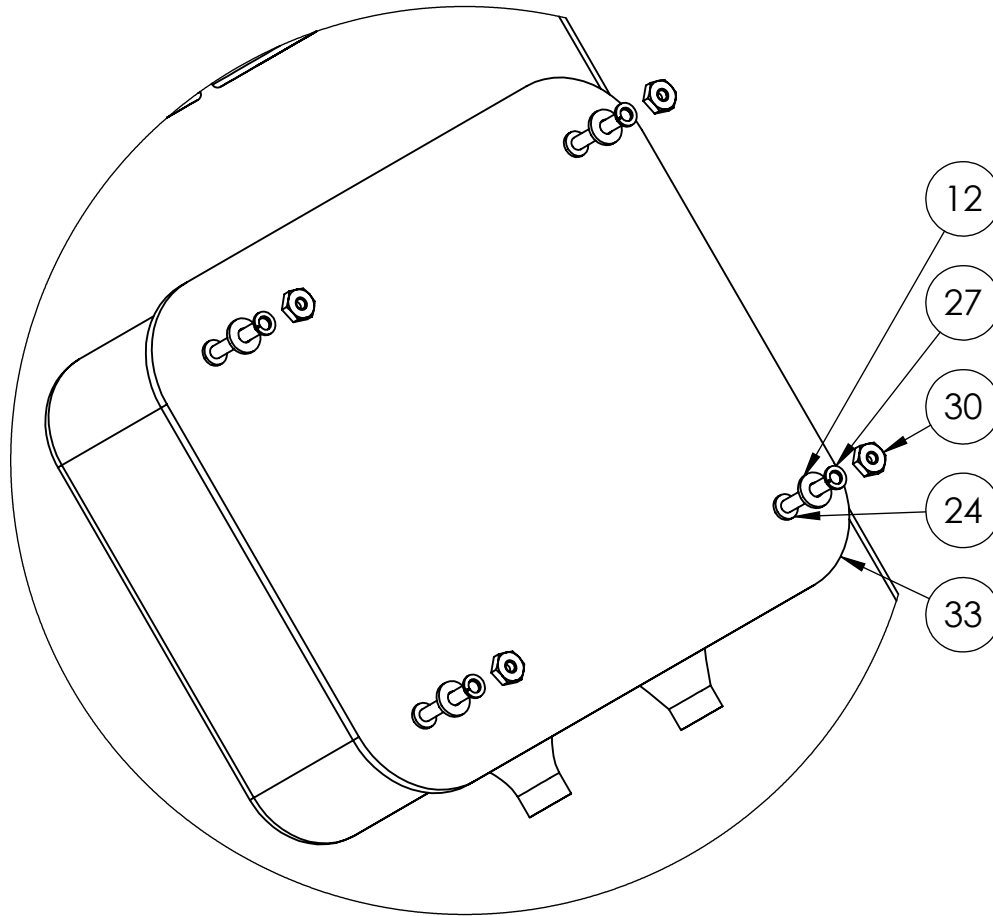
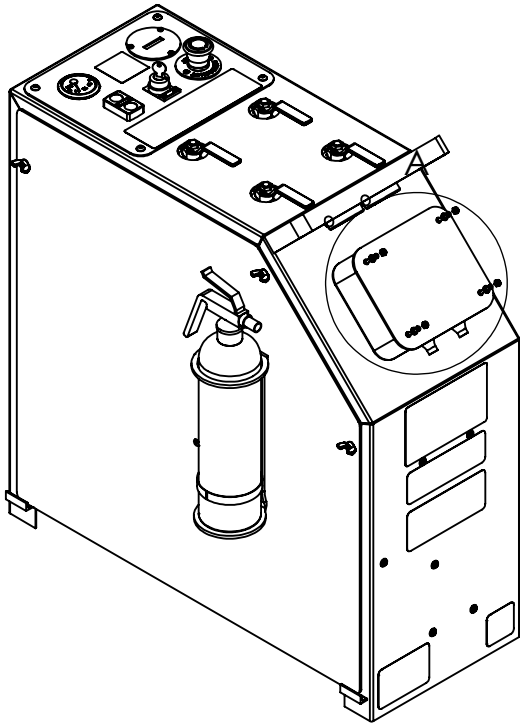
PART NO.

NOT TO SCALE


SHEET 3 OF 3

## BATTERY CHARGER

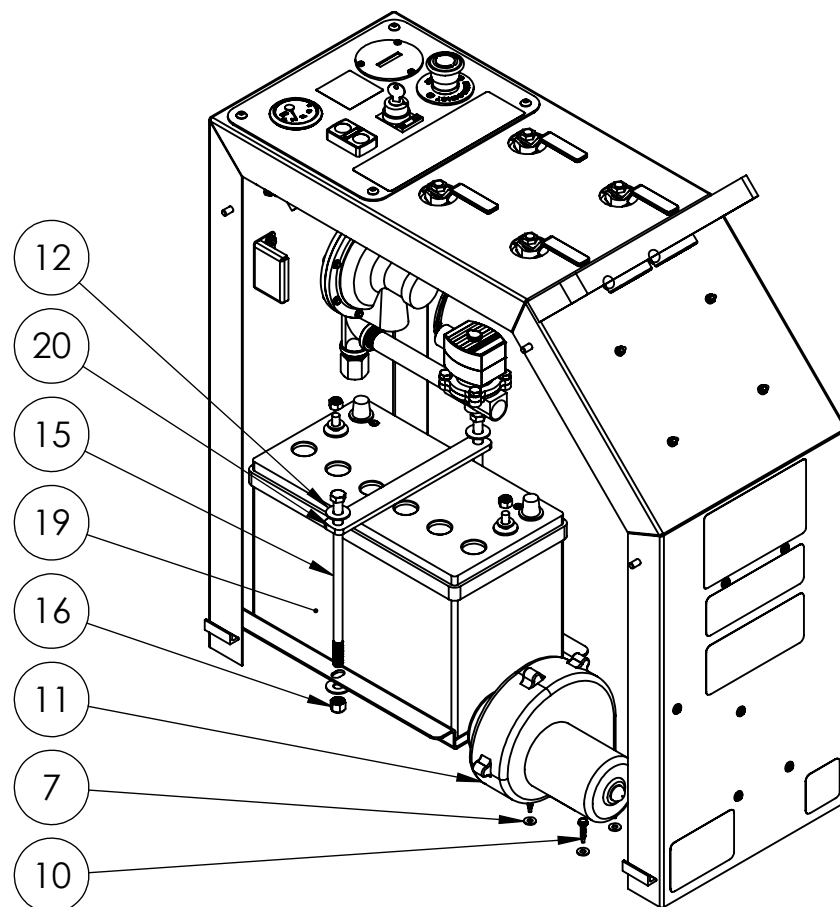
ITEM NO.	PART NUMBER	DESCRIPTION	QTY.
12	1133070	#6 SAE FLAT WASHER	4
24	1128828	6-32 x 1" PHIL PAN HEAD M/S	4
27	1133610	#6 SPLIT LOCK WASHER	4
30	1136020	#6-32 MACHINE SCREW NUT	4
33	GEN 1	ON BOARD BATTERY CHARGER 10A, GEN 1 GENIUS SEALED MARINE TYPE	1



DETAIL A  
SCALE 1 : 2

<div>PROPRIETARY AND CONFIDENTIAL</div> <div>THE INFORMATION CONTAINED IN THIS DRAWING IS THE SOLE PROPERTY OF KEIZER MORRIS INTERNATIONAL. ANY REPRODUCTION IN PART OR AS A WHOLE WITHOUT THE WRITTEN PERMISSION OF KEIZER MORRIS INTERNATIONAL IS PROHIBITED.</div>	PROJECT	NAME	DATE	DESCRIPTION:  CONTROL PANEL ASSEMBLY C1M1
	KM 4-40/48		Wednesday, September 23, 2020 3:09:21 PM	
	MATERIAL			
<div><div>TM</div><div>DWG. NO. KMI1173</div><div>PART NO. KMI1272-1</div><div>NOT TO SCALE</div><div>SHEET 6 OF 14</div></div>				

BATTERY AND BLOWER			
ITEM NO.	PART NUMBER	DESCRIPTION	QTY.
7	1133074	#10 SAE FLAT WASHER	4
10	1131813	10-16 X 1" HEX WASHER HEAD TEK SELF DRILLING SCREW	4
11	5PHC7	12 VDC BLOWER, JABSCO 250 CFM	1
12	1133008	3/8" USS FLAT WASHER	4
15	13130	3/8-16 X 8 1/2" HEX CAP SCREW GR 5	2
16	1137024	3/8-16 NYLON INSERT LOCKNUT GR 2	2
19	EV 27A-A-AM-PP	12V AGM DRY CELL #27 BATTERY	1
20	KMI0651-0	BATTERY HOLD DOWN STRAP, IR, LB2-16, KM 4-40, KM 4-48	1



<b>PROPRIETARY AND CONFIDENTIAL</b> THE INFORMATION CONTAINED IN THIS DRAWING IS THE SOLE PROPERTY OF KEIZER MORRIS INTERNATIONAL. ANY REPRODUCTION IN PART OR AS A WHOLE WITHOUT THE WRITTEN PERMISSION OF KEIZER MORRIS INTERNATIONAL IS PROHIBITED.	PROJECT	NAME	DATE	DESCRIPTION: CONTROL PANEL ASSEMBLY C1M1
	KM 4-40/48		Wednesday, September 23, 2020 3:09:21 PM	
	MATERIAL			



TM

DWG. NO. KMI1173

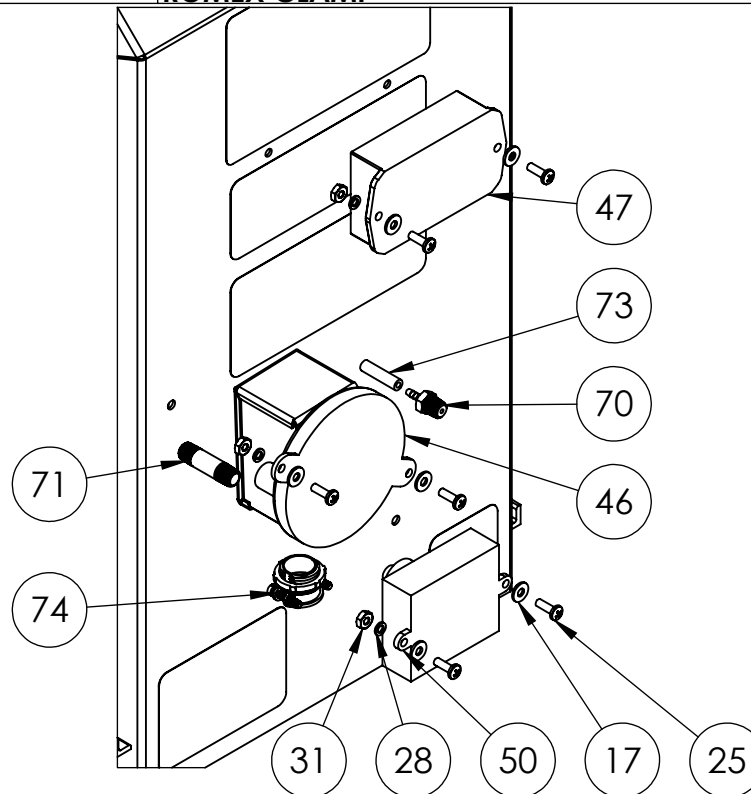
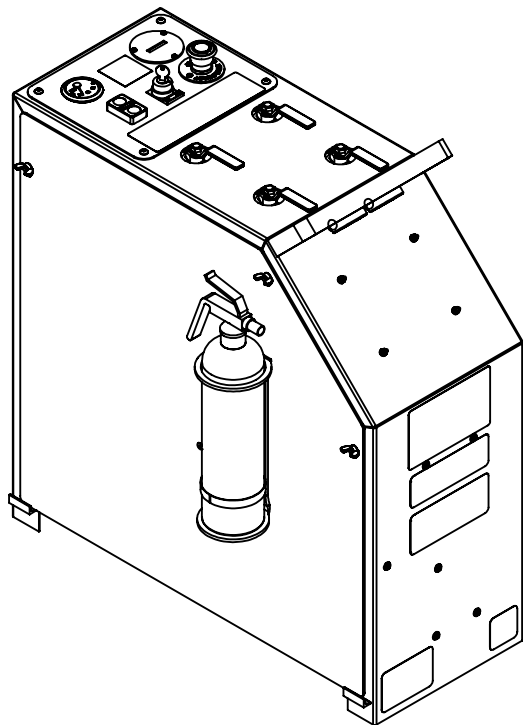
PART NO. KMI1272-1

NOT TO SCALE

SHEET 7 OF 14

# **PRESSURE SWITCH, BLOWER DELAY/CYCLE MODULE, 12V SPARKER**

ITEM NO.	PART NUMBER	DESCRIPTION	QTY.
17	1133072	#8 SAE FLAT WASHER	6
25	1128879	8-32 X1/2" PHIL PAN HEAD M/S	6
28	1133612	#8 SPLIT LOCK WASHER	6
31	1136024	#8-32 MACHINE SCREW NUT	6
46	114029-10	SPDT AIR PRESSURE SWITCH (KM IR STD)	1
47	BD/CM	BLOWER DELAY/CYCLE MODULE	1
50	2010-12	12 V AUTOMATIC SPARKER (POTTED) FOR INFRAREDS	1
70	69917	1/8" HOSE BARB X 1/8" MNPT	1
71	69866	1/8" X 1 1/2" BRASS NIPPLE	1
73	5187K61	1/8" I.D. GENERAL PURPOSE HOSE; TYGON	1
74	NEEC500	3/8" x 1/2" KO BOX CONNECTOR, 2 SCREW ROMEX CLAMP	1



## **PROPRIETARY AND CONFIDENTIAL**

THE INFORMATION CONTAINED IN THIS DRAWING IS THE SOLE PROPERTY OF KEIZER MORRIS INTERNATIONAL. ANY REPRODUCTION IN PART OR AS A WHOLE WITHOUT THE WRITTEN PERMISSION OF KEIZER MORRIS INTERNATIONAL IS PROHIBITED.

## **PROJECT**

**KM 4-40/48**

## **NAME**

## **DATE**

Wednesday,  
September 23,  
2020 3:09:21 PM

## **DESCRIPTION:**

CONTROL PANEL ASSEMBLY C1M1

## **MATERIAL**



**TM**

DWG. NO. KM1173

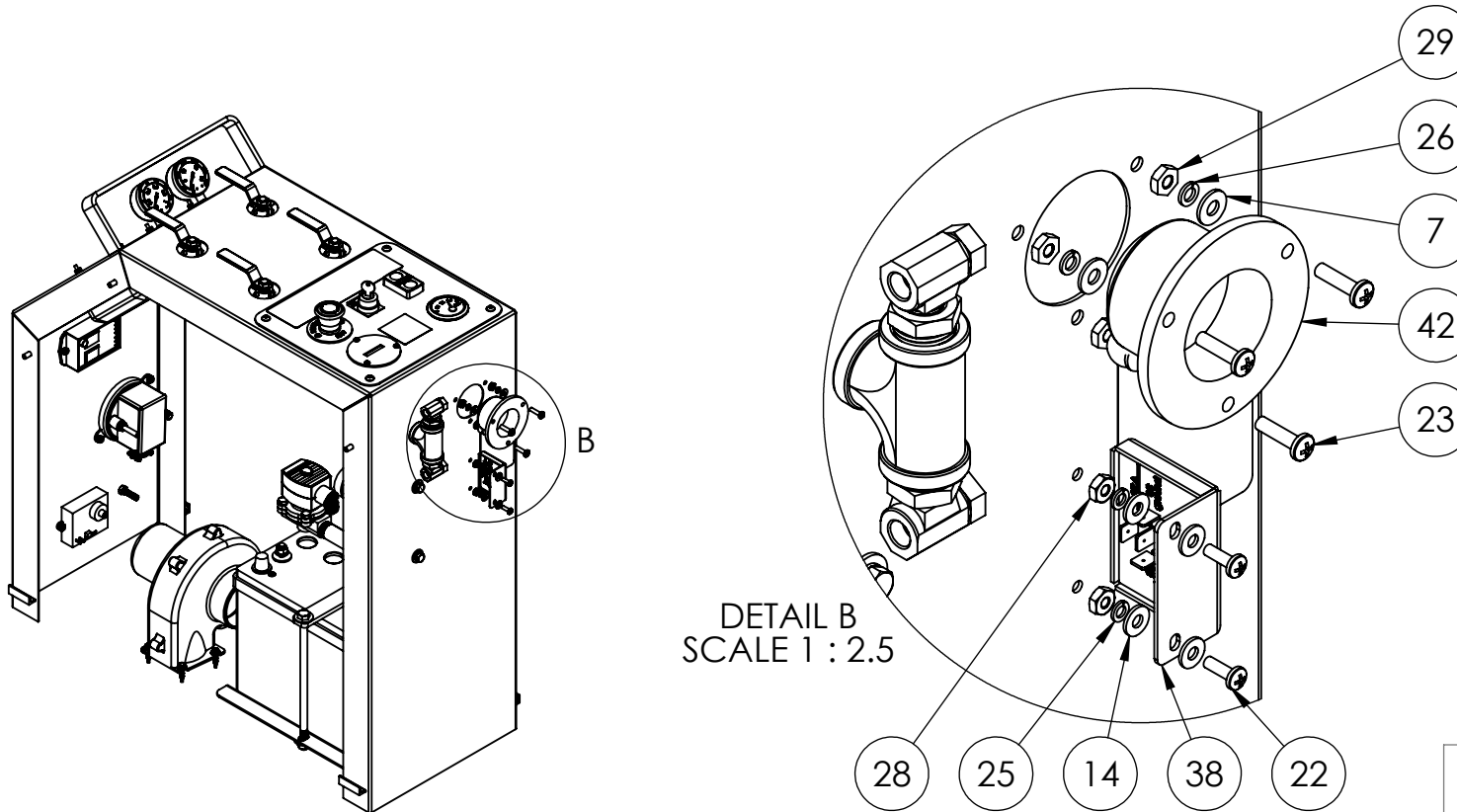
PART NO. KM1272-1

NOT TO SCALE

SHEET 8 OF 14

## AC PORT, 10 MINUTE TIMER

ITEM NO.	PART NUMBER	DESCRIPTION	QTY.
7	1133074	#10 SAE FLAT WASHER	3
14	1133072	#8 SAE FLAT WASHER	4
22	1128879	8-32 X1/2" PHIL PAN HEAD M/S	2
23	1129061	10-32 x 3/4" PHIL PAN HEAD M/S	3
25	1133612	#8 SPLIT LOCK WASHER	2
26	1133614	#10 SPLIT LOCK WASHER	3
28	1136024	#8-32 MACHINE SCREW NUT	2
29	1136030	#10-32 MACHINE SCREW NUT	3
38	VCM-05-10MF	ONE-SHOT TIMER RELAY, 10 MINUTES	1
42	GCP1	AC PORT PLUG; GENIUS, BLACK 13 AMP, 12V AC	1



### PROPRIETARY AND CONFIDENTIAL

THE INFORMATION CONTAINED IN THIS DRAWING IS THE SOLE PROPERTY OF KEIZER MORRIS INTERNATIONAL. ANY REPRODUCTION IN PART OR AS A WHOLE WITHOUT THE WRITTEN PERMISSION OF KEIZER MORRIS INTERNATIONAL IS PROHIBITED.

### PROJECT

KM 4-40/48

### NAME

### DATE

Wednesday,  
September 23,  
2020 3:09:21 PM

### MATERIAL

### DESCRIPTION:

CONTROL PANEL ASSEMBLY C1M1



TM

DWG. NO. KMI1173

PART NO. KMI1272-1

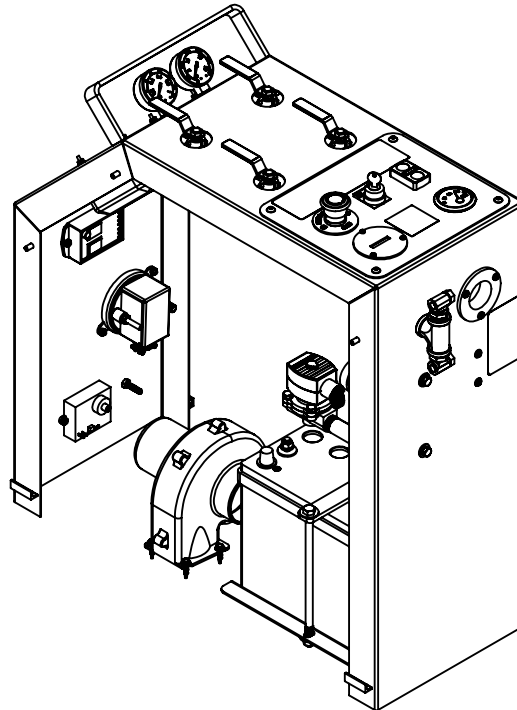
NOT TO SCALE

SHEET 9 OF 14



## CONTROL PANEL PLUMBING

ITEM NO.	PART NUMBER	DESCRIPTION	QTY.
4	110120300	1/4- 20 x 1/2" HEX CAP SCREW GR 5	2
13	1133004	1/4" USS FLAT WASHER	2
34	BV2103-C	3/8" FULL PORT BALL VALVE	4
35	66313	1/2" BLACK MALL TEE	3
36	66288	1/2" x 1/4" BLACK HEX BUSHING	2
37	PN 2000	1/4" INVFL X 1/4" MPT BRASS TEE 2 PIECE WITH CHECK	2
39	LV4403 TR4	FIRST STAGE HIGH PRESSURE REGULATOR, REGO (4-40/4-48)	1
40	4666430	1/2" X CLOSE BLACK STEEL NIPPLE	3
41	66289	1/2" X 3/8" BLACK HEX BUSHING	1
42	48-4C	1/4" X 3/8" MNPT MALE CONNECTOR	1
43	4666525	1/2" X 5 1/2" BLACK STEEL NIPPLE	1
44	8210G002-12/VDC	1/2" SOLENOID VALVE, ASCO 12VDC	1
45	11898-01898	1/2" BLACK MALL HEX CAP	1
63	1133618	1/4" SPLIT LOCK WASHER	2



**PROPRIETARY AND CONFIDENTIAL**

THE INFORMATION CONTAINED IN THIS DRAWING IS THE SOLE PROPERTY OF KEIZER MORRIS INTERNATIONAL. ANY REPRODUCTION IN PART OR AS A WHOLE WITHOUT THE WRITTEN PERMISSION OF KEIZER MORRIS INTERNATIONAL IS PROHIBITED.

**PROJECT**

**KM 4-40/48**

**NAME**

**DATE**

Wednesday,  
September 23,  
2020 3:09:21 PM

**DESCRIPTION:**

CONTROL PANEL ASSEMBLY C1M1

**MATERIAL**



**TM**

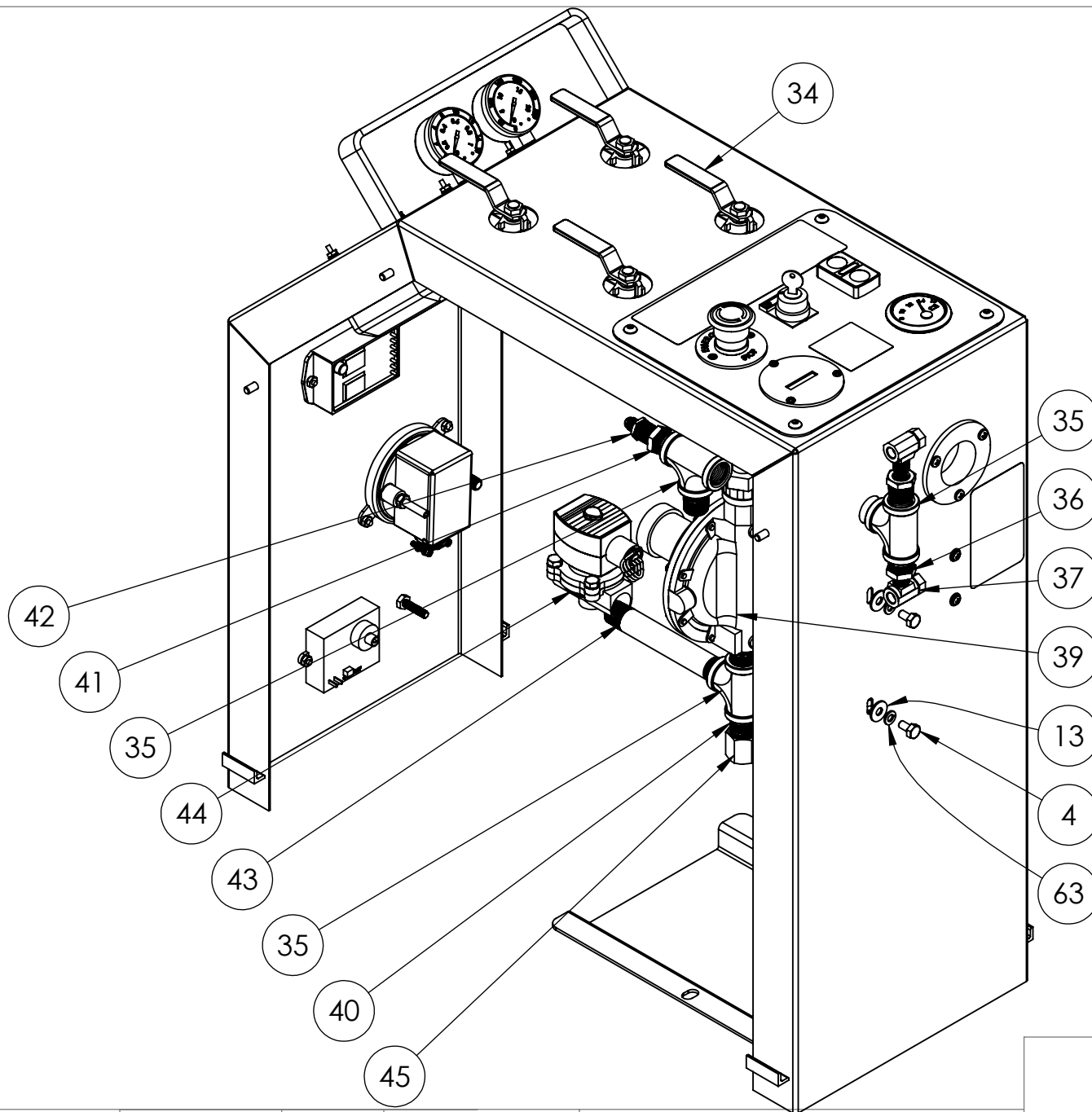
DWG. NO. KM1173

PART NO. KM1272-1

NOT TO SCALE

SHEET 10 OF 14





TM

DWG. NO. KMI1173

PART NO. KMI1272-1

NOT TO SCALE

SHEET 11 OF 14

PROPRIETARY AND CONFIDENTIAL

THE INFORMATION CONTAINED IN THIS DRAWING IS THE SOLE PROPERTY OF KEIZER MORRIS INTERNATIONAL. ANY REPRODUCTION IN PART OR AS A WHOLE WITHOUT THE WRITTEN PERMISSION OF KEIZER MORRIS INTERNATIONAL IS PROHIBITED.

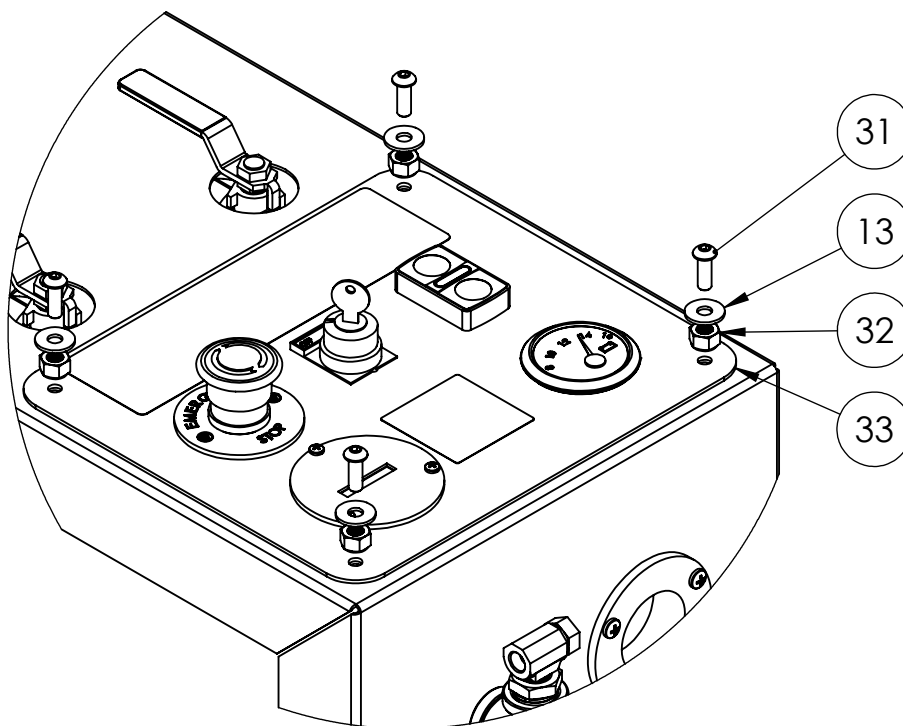
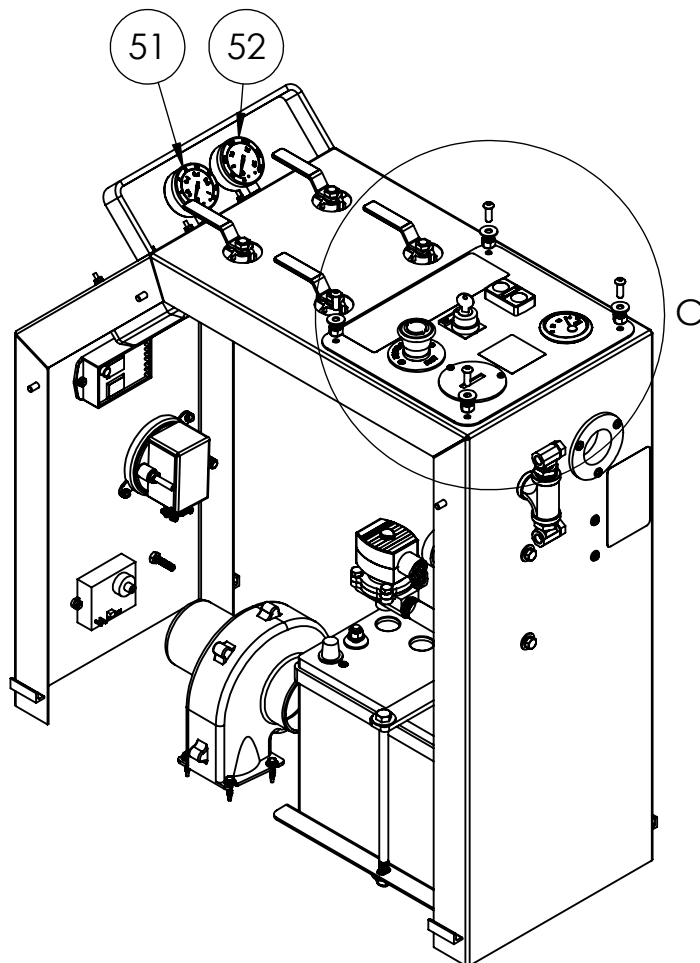
PROJECT	NAME	DATE
KM 4-40/48		Wednesday, September 23, 2020 3:09:21 PM
MATERIAL		

DESCRIPTION:

CONTROL PANEL ASSEMBLY C1M1

## CONTROL PANEL FACE PLATE

ITEM NO.	PART NUMBER	DESCRIPTION	QTY.
13	1133004	1/4" USS FLAT WASHER	6
31	1173754	1/4"-20 X 3/4" (ALLEN HEAD) BUTTON SOCKET CAP SCREW 18-8 SS	4
32	1137018	1/4- 20 NYLON INSERT LOCK NUT GR2	4
33	SPAHB	SWITCH PANEL ASSEMBLY AND HARNESS "BRAIDED"	1
51	SE-101D-204B	0-15 PSI BOTTOM MOUNT GAUGE (1/4" NPT)	1
52	SE-101D-204H	0-300 PSI BOTTOM MOUNT GAUGE (1/4" NPT)	1



DETAIL C  
SCALE 2 : 7

**PROPRIETARY AND CONFIDENTIAL**

THE INFORMATION CONTAINED IN THIS DRAWING IS THE SOLE PROPERTY OF KEIZER MORRIS INTERNATIONAL. ANY REPRODUCTION IN PART OR AS A WHOLE WITHOUT THE WRITTEN PERMISSION OF KEIZER MORRIS INTERNATIONAL IS PROHIBITED.

**PROJECT**

KM 4-40/48

**NAME**

**DATE**

Wednesday,  
September 23,  
2020 3:09:21 PM

**MATERIAL**

**DESCRIPTION:**

CONTROL PANEL ASSEMBLY C1M1



**TM**

DWG. NO. KMI1173

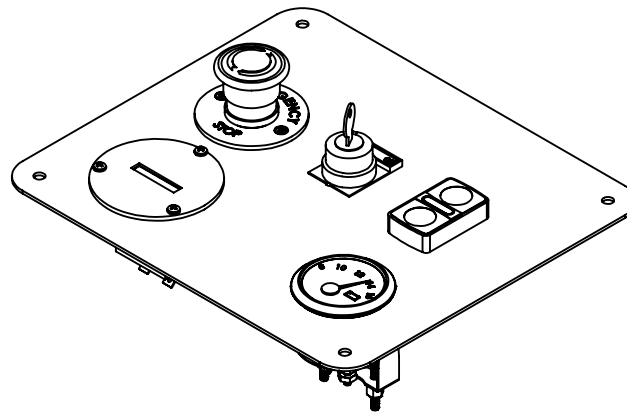
PART NO. KMI272-1

NOT TO SCALE

SHEET 12 OF 14

## SWITCH PANEL ASSEMBLY

ITEM NO.	PART NUMBER	DESCRIPTION	QTY.
2	1128804	6-32 X 1/2" PHIL PAN HEAD M/S	3
3	1133070	#6 SAE FLAT WASHER	3
4	1133610	#6 SPLIT LOCK WASHER	3
5	1136020	#6-32 MACHINE SCREW NUT	3
6	T14B517BC	HOUR METER, QUARTZ, 8-32 V	1
7	VDO 332-901	VDO 12V COCKPIT VOLTMETER, 8-16 V, 2 1/6" DIAMETER, SHORT SWEEP	1
11	ZB5 AW743	E STOP HEAD, ILLUM, PLASTIC, TWIST TO RELEASE, 40MM HEAD, 22MM MOUNT	1
12	ZB4 BW7A3741	START/STOP W/ PILOT LIGHT HEAD, METAL, 22MM	1
14	ZB4 BG2	KEYED SWITCH HEAD, METAL, 22MM	1
17	ZB5AZ009	BODY FIXING COLLAR FOR ELECTRICAL BLOCK, PLASTIC	1
18	ZBE-1025	NC CONTACT BLOCK FOR 22M HEAD, SPRING CLAMP TERMS-SCHNEIDER	2
19	ZBVB45	RED ILLUMINATED LED BLOCK FOR 22MM HEAD, 24V, SPRING CLAMP TERMS..	1
20	ZB4BZ009	BODY FIXING COLLAR FOR ELECTRICAL BLOCK, METAL	2
21	ZBE-1015	NO CONTACT BLOCK FOR 22MM HEAD, SPRING CLAMP TERMS..	4
22	ZBVB15	WHITE ILLUMINATED LED BLOCK FOR 22MM HEAD, 24V, SPRING CLAMP TERMS..	1



<b>PROPRIETARY AND CONFIDENTIAL</b> THE INFORMATION CONTAINED IN THIS DRAWING IS THE SOLE PROPERTY OF KEIZER MORRIS INTERNATIONAL. ANY REPRODUCTION IN PART OR AS A WHOLE WITHOUT THE WRITTEN PERMISSION OF KEIZER MORRIS INTERNATIONAL IS PROHIBITED.	PROJECT	NAME	DATE	DESCRIPTION: SWITCH PANEL ASSEMBLY AND HARNESS "BRAIDED"
	<b>KM 4-40/48</b>	DANIEL F.	Wednesday, September 23, 2020 3:09:20 PM	
	MATERIAL			



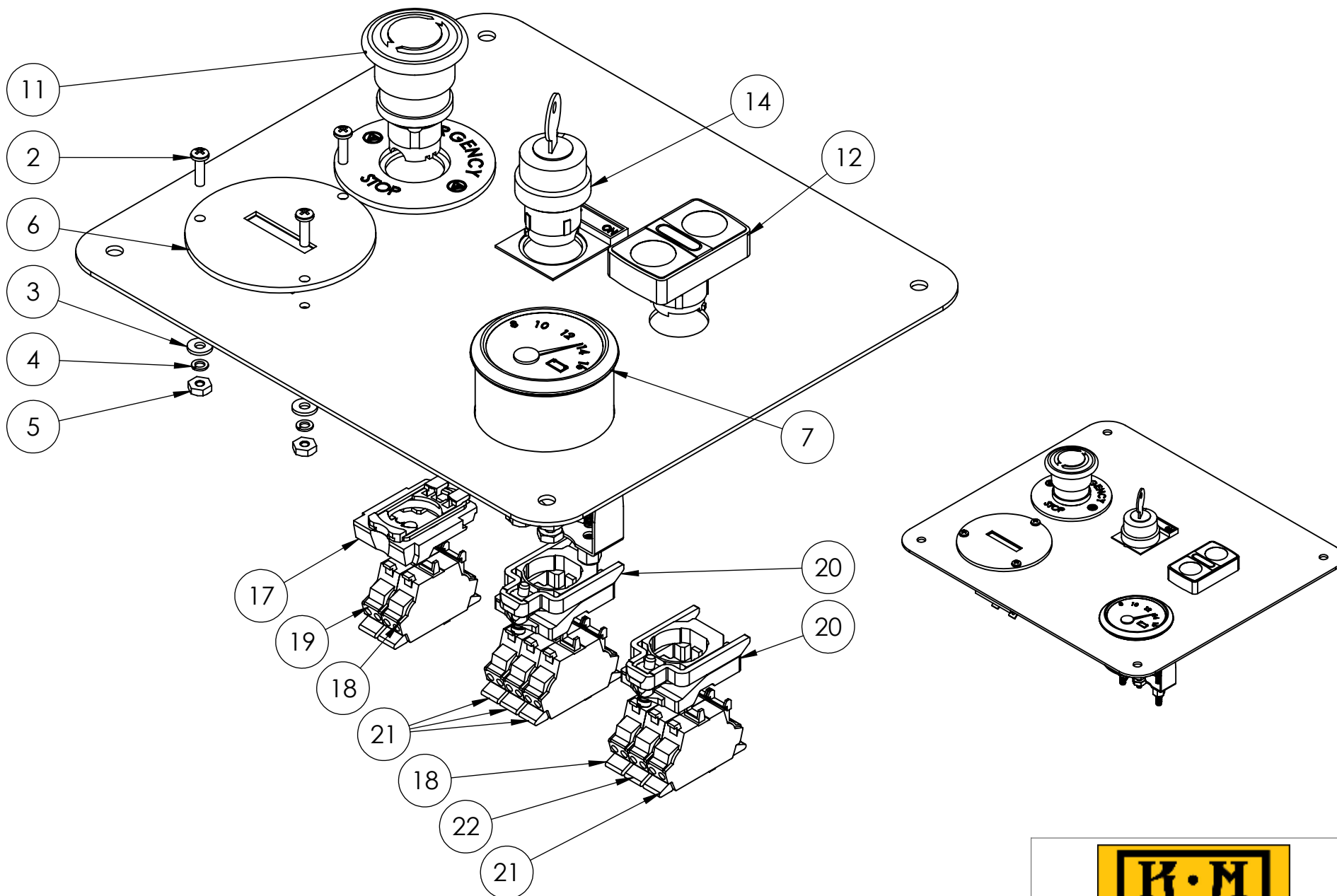
**TM**

DWG. NO.

PART NO. SPAHB

NOT TO SCALE

SHEET 13 OF 14



**PROPRIETARY AND CONFIDENTIAL**

THE INFORMATION CONTAINED IN THIS DRAWING IS THE SOLE PROPERTY OF KEIZER MORRIS INTERNATIONAL. ANY REPRODUCTION IN PART OR AS A WHOLE WITHOUT THE WRITTEN PERMISSION OF KEIZER MORRIS INTERNATIONAL IS PROHIBITED.

PROJECT

**KM 4-40/48**

NAME

DANIEL F.

DATE

Wednesday,  
September 23,  
2020 3:09:20 PM

DESCRIPTION:

SWITCH PANEL ASSEMBLY AND HARNESS  
"BRAIDED"

MATERIAL



**TM**

DWG. NO.

PART NO. SPAHB

NOT TO SCALE

SHEET 14 OF 14