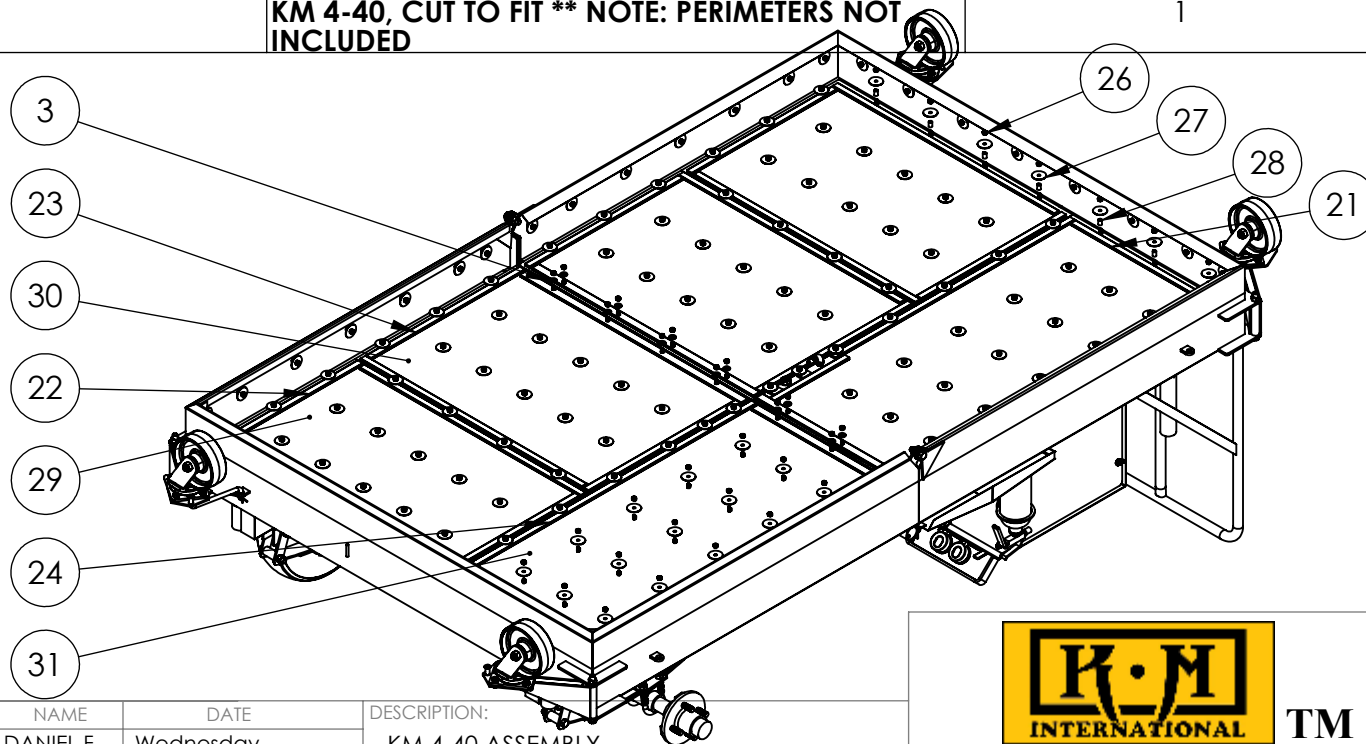


BLANKET AND BLANKET FRAMES

ITEM NO.	PART NUMBER	DESCRIPTION	QTY.
3	1133004	1/4" USS FLAT WASHER	14
21	KMI2565-0	BLANKET FRAME ZONE 2, FOR 4-40 / 4-48 IR, HEAT BLACK	1
22	KMI2563-0	BLANKET FRAME ZONE 1 CORNER, ZONE 3 CORNER, FOR 4-40 IR, HEAT BLACK	2
23	KMI2564-0	BLANKET FRAME ZONE 1 MIDDLE, ZONE 3 MIDDLE, FOR 4-40 IR, HEAT BLACK	2
24	KMI2576-0	BLANKET FRAME ZONE 4, FOR 4-40 / 4-48 IR, HEAT BLACK	1
26	70710	1/4-20 HEX FINISH NUT 18-8 SS	188
27	0172787	1/4" x 1 1/2" FENDER WASHER 18-8 SS	174
28	563398278	1/4"- 20 BUSHING FOR PERIMETERS (PLAIN, COLD ROLLED STEEL BUSHING)	38
29	KMI3114-0	CERAMIC BLANKET FOR ZONE 1 OR 3 CORNER PIECE - 34.5" X 23.25" (UNIT A)	2
30	KMI3115-0	CERAMIC BLANKET FOR ZONE 1 OR 3 MIDDLE PIECE - 34.5" X 24" (UNIT B)	2
31	KMI3116-0	CERAMIC BLANKET FOR ZONE 2 OR 4 - 47.25" X 23.75" (UNIT C)	2
32	KMI3122-0	COMPLETE SET OF BLANKETS FOR ALL ZONES OF KM 4-40, CUT TO FIT ** NOTE: PERIMETERS NOT INCLUDED	1

33
THE COMPLETE SET
OF BLANKET
INCLUDES ITEM
NUMBERS 30, 31, 32



PROPRIETARY AND CONFIDENTIAL

THE INFORMATION CONTAINED IN THIS DRAWING IS THE SOLE PROPERTY OF KEIZER MORRIS INTERNATIONAL. ANY REPRODUCTION IN PART OR AS A WHOLE WITHOUT THE WRITTEN PERMISSION OF KEIZER MORRIS INTERNATIONAL IS PROHIBITED.

PROJECT

KM 4-40

NAME

DANIEL F.

DATE

Wednesday,
September 23,
2020 11:36:26 AM

DESCRIPTION:

KM 4-40 ASSEMBLY

MATERIAL



TM

DWG. NO.

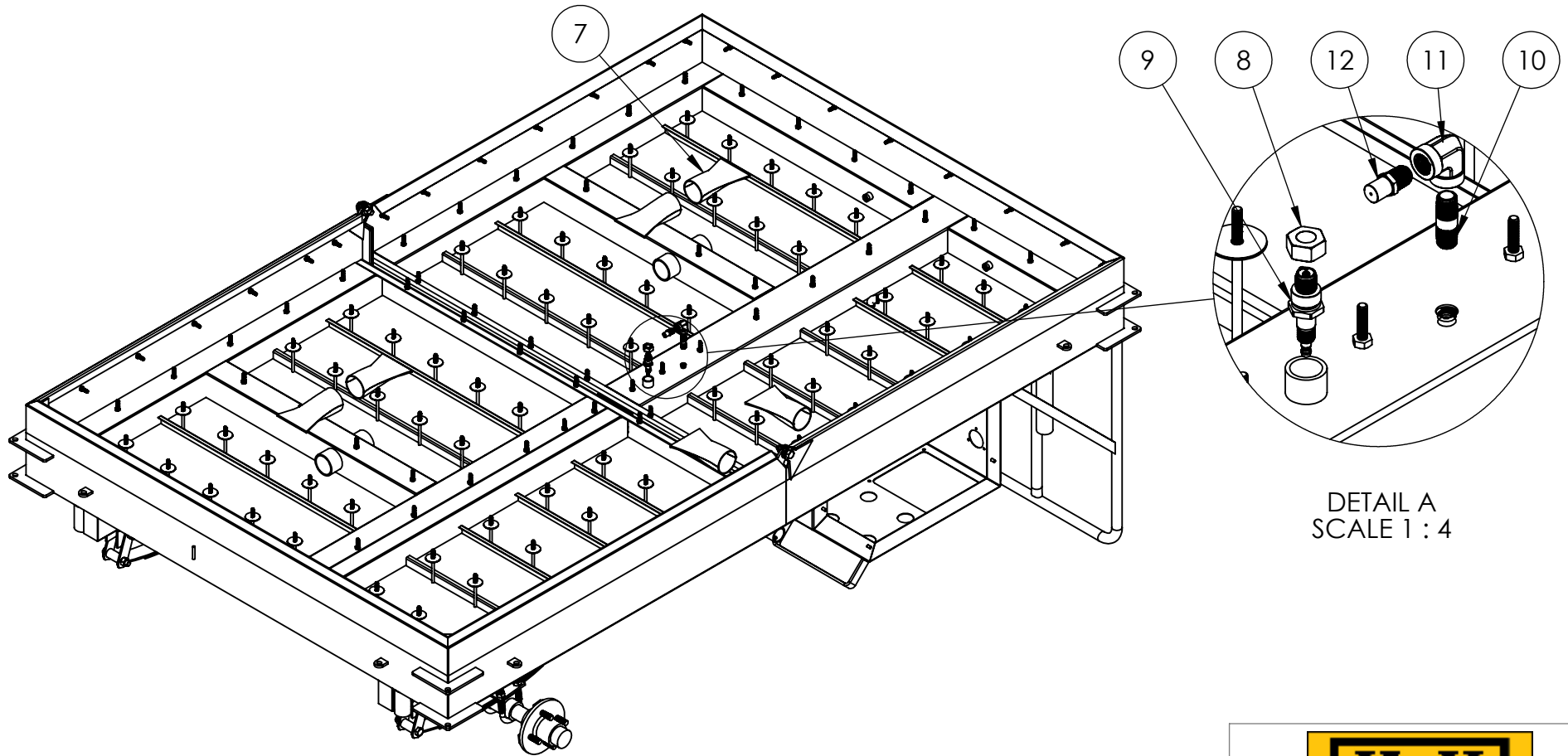
PART NO.

NOT TO SCALE

SHEET 5 OF 5

FLAME ARRESTER, SPARK PLUG, ORFICE

ITEM NO.	PART NUMBER	DESCRIPTION	QTY.
7	KMI0377-0	4-40/48 FLAME ARRESTER	6
8	KMI1169-0	BRASS SPARK PLUG NUT WITH OUTSOURCED MACHINING	1
9	RN12YC	SPARK PLUG 404_CHAMPION (RN12YC)	1
10	69870	1/4" X 1 1/2" BRASS NIPPLE	1
11	100-B	1/4" BRASS 90° ELBOW	1
12	24-078S-51	LB 2-16/2-18 PILOT ORFICE	1



DETAIL A
SCALE 1 : 4

PROPRIETARY AND CONFIDENTIAL

THE INFORMATION CONTAINED IN THIS DRAWING IS THE SOLE PROPERTY OF KEIZER MORRIS INTERNATIONAL. ANY REPRODUCTION IN PART OR AS A WHOLE WITHOUT THE WRITTEN PERMISSION OF KEIZER MORRIS INTERNATIONAL IS PROHIBITED.

PROJECT

KM 4-40/48

NAME

DANIEL F.

DATE

Wednesday,
September 23,
2020 11:50:53 AM

DESCRIPTION:

KM 4-40/48 ASSEMBLY

MATERIAL



TM

DWG. NO.

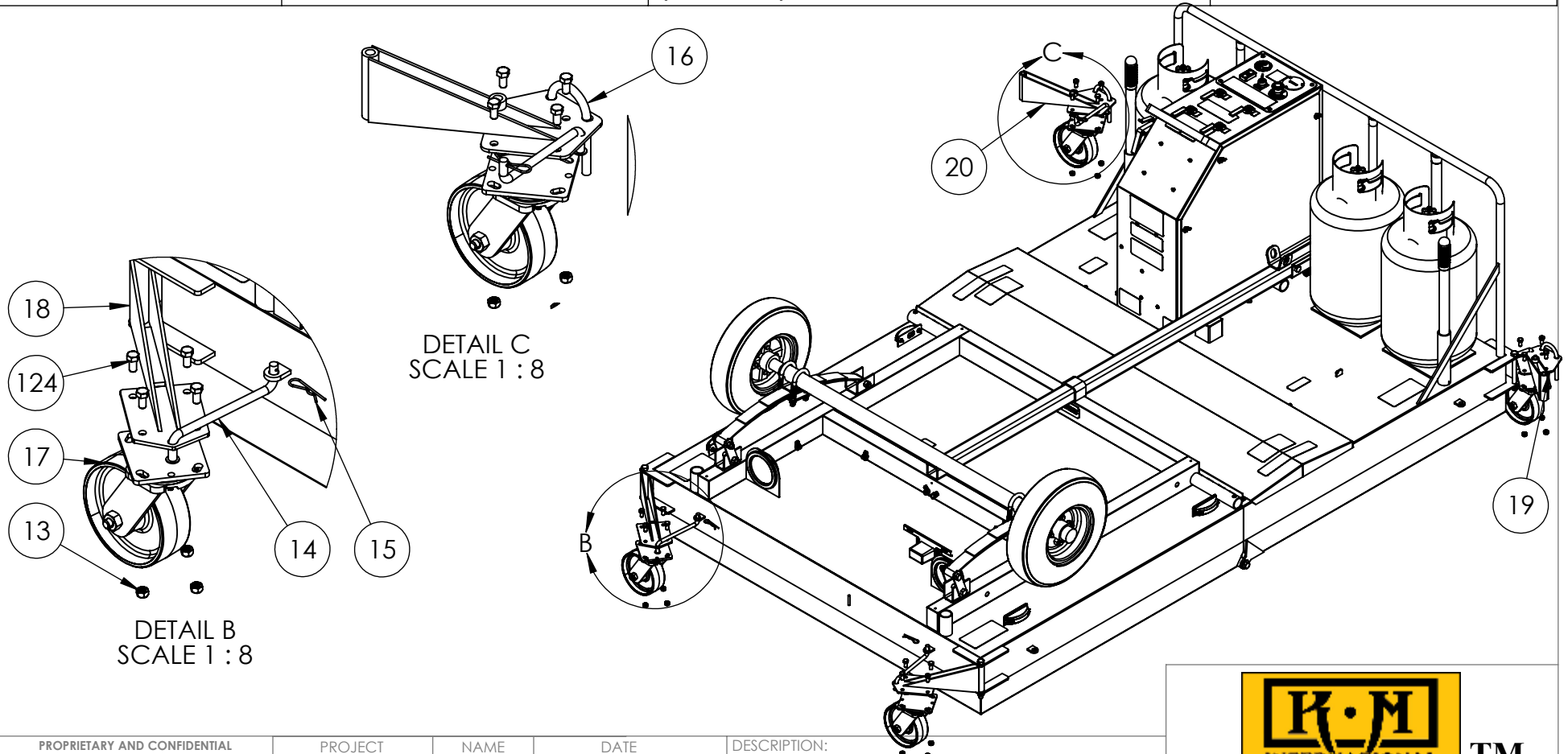
PART NO.

NOT TO SCALE

SHEET 3 OF 5

CASTERS

ITEM NO.	PART NUMBER	DESCRIPTION	QTY.
13	1137264	3/8-16 TOP LOCK NUT	4
14	KMI0165-0	CASTER PIN S TYPE	1
15	45287	.093" WIRE X 2 1/2" L HAIR COTTER PIN (3/8" - 3/4" SHAFT SIZE)	1
16	KMI0166-0	7/16" U-PIN FOR LOCKING CASTER	1
17	CW62SS-SLB-S	6" STEEL SWIVEL CASTERS W/BRAKE (4-40/48)	1
18	KMI1547-0	CASTER BRACKET NON-LOCKING (ZONE 3 & 4)	2
19	KMI1017-1-L	CASTER BRACKET ZONE 1	1
20	KMI1018-1-R	CASTER BRACKET ZONE 2	1
124	110120342	3/8"- 16 x 3/4" HEX CAP SCREW GR5	4



PROPRIETARY AND CONFIDENTIAL
THE INFORMATION CONTAINED IN THIS DRAWING IS THE SOLE PROPERTY OF KEIZER MORRIS INTERNATIONAL. ANY REPRODUCTION IN PART OR AS A WHOLE WITHOUT THE WRITTEN PERMISSION OF KEIZER MORRIS INTERNATIONAL IS PROHIBITED.

PROJECT	NAME	DATE
KM 4-40/48	DANIEL F.	Wednesday, September 23, 2020 11:50:53 AM
MATERIAL		

DESCRIPTION:
KM 4-40/48 ASSEMBLY



TM

DWG. NO.

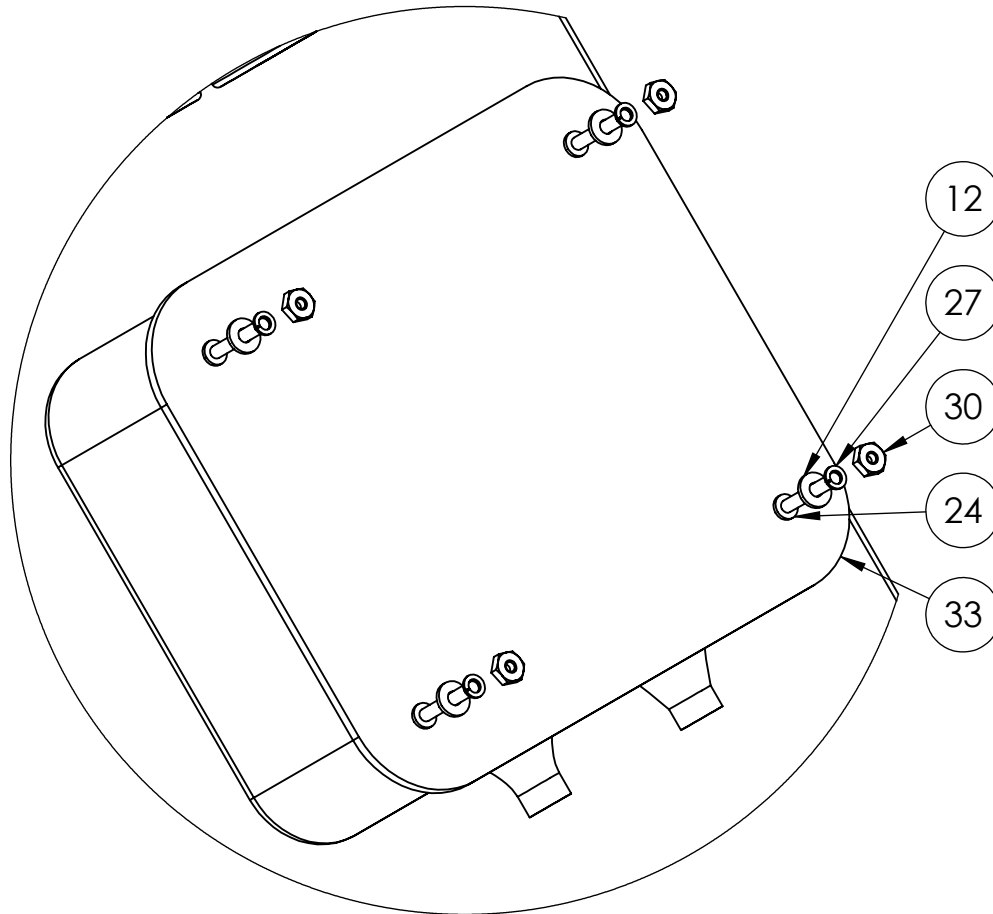
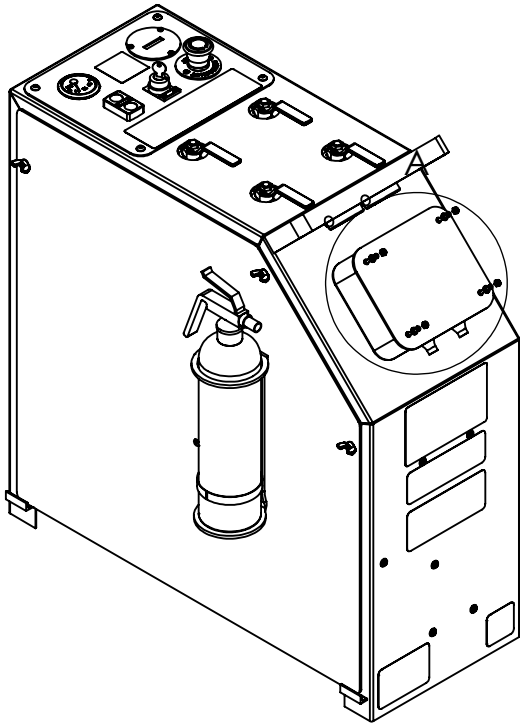
PART NO.

NOT TO SCALE

SHEET 4 OF 5

BATTERY CHARGER

ITEM NO.	PART NUMBER	DESCRIPTION	QTY.
12	1133070	#6 SAE FLAT WASHER	4
24	1128828	6-32 x 1" PHIL PAN HEAD M/S	4
27	1133610	#6 SPLIT LOCK WASHER	4
30	1136020	#6-32 MACHINE SCREW NUT	4
33	GEN 1	ON BOARD BATTERY CHARGER 10A, GEN 1 GENIUS SEALED MARINE TYPE	1



DETAIL A
SCALE 1 : 2

PROPRIETARY AND CONFIDENTIAL

THE INFORMATION CONTAINED IN THIS DRAWING IS THE SOLE PROPERTY OF KEIZER MORRIS INTERNATIONAL. ANY REPRODUCTION IN PART OR AS A WHOLE WITHOUT THE WRITTEN PERMISSION OF KEIZER MORRIS INTERNATIONAL IS PROHIBITED.

PROJECT

KM 4-40/48

NAME

DATE

Wednesday,
September 23,
2020 3:09:21 PM

DESCRIPTION:

CONTROL PANEL ASSEMBLY C1M1

MATERIAL



TM

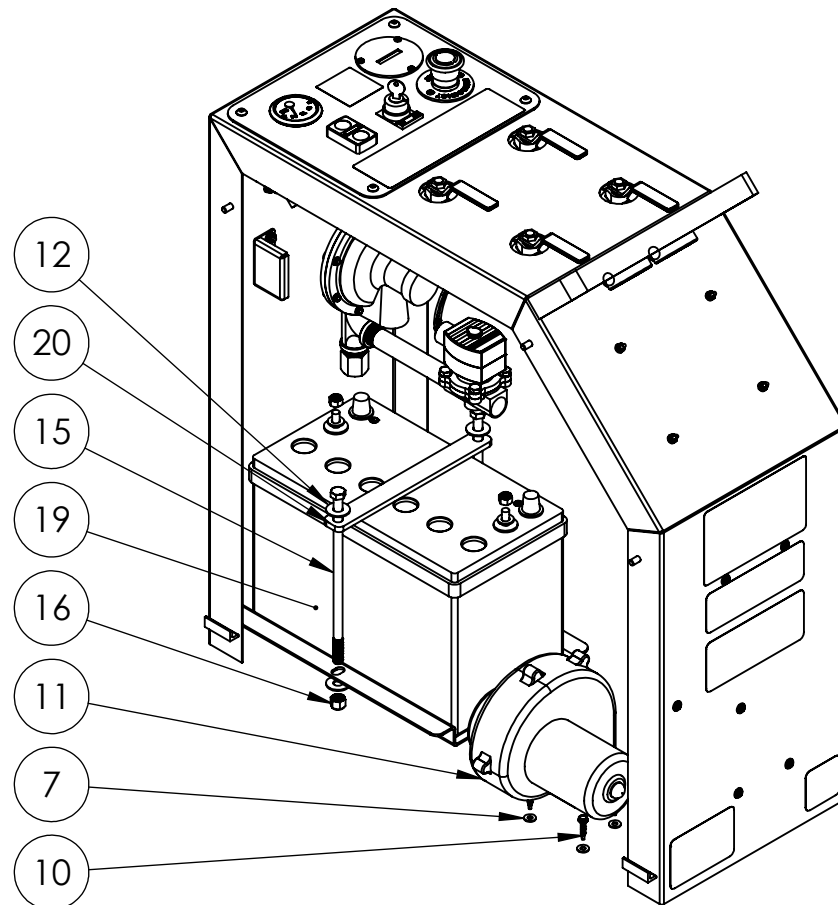
DWG. NO. KMI1173


PART NO. KMI1272-1

NOT TO SCALE

SHEET 6 OF 14

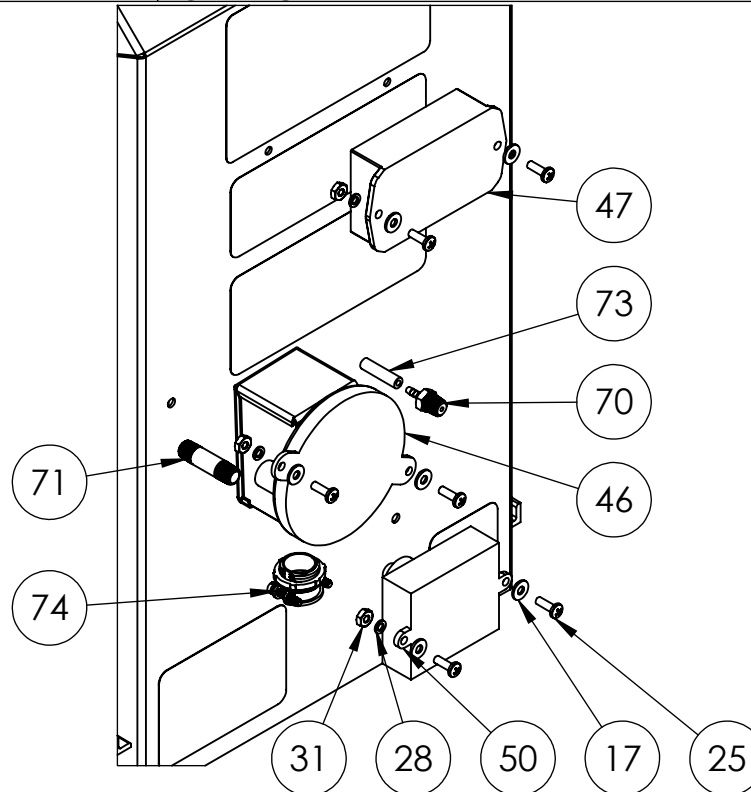
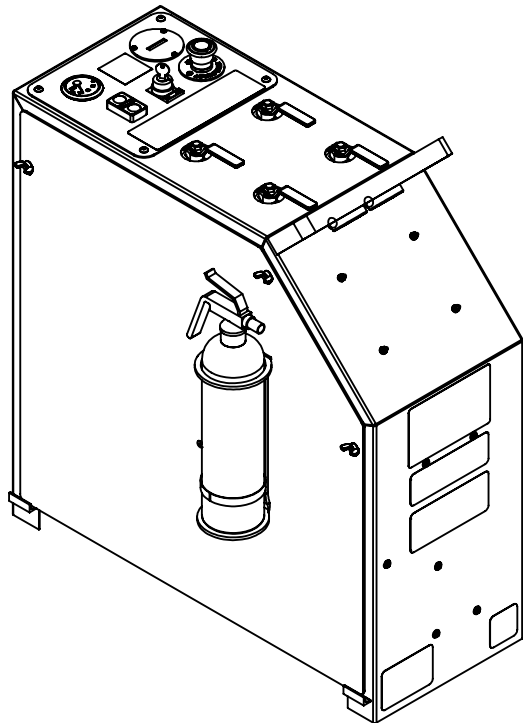
BATTERY AND BLOWER			
ITEM NO.	PART NUMBER	DESCRIPTION	QTY.
7	1133074	#10 SAE FLAT WASHER	4
10	1131813	10-16 X 1" HEX WASHER HEAD TEK SELF DRILLING SCREW	4
11	5PHC7	12 VDC BLOWER, JABSCO 250 CFM	1
12	1133008	3/8" USS FLAT WASHER	4
15	13130	3/8-16 X 8 1/2" HEX CAP SCREW GR 5	2
16	1137024	3/8-16 NYLON INSERT LOCKNUT GR 2	2
19	EV 27A-A-AM-PP	12V AGM DRY CELL #27 BATTERY	1
20	KMI0651-0	BATTERY HOLD DOWN STRAP, IR, LB2-16, KM 4-40, KM 4-48	1



<div>PROPRIETARY AND CONFIDENTIAL</div> <div>THE INFORMATION CONTAINED IN THIS DRAWING IS THE SOLE PROPERTY OF KEIZER MORRIS INTERNATIONAL. ANY REPRODUCTION IN PART OR AS A WHOLE WITHOUT THE WRITTEN PERMISSION OF KEIZER MORRIS INTERNATIONAL IS PROHIBITED.</div>	PROJECT	NAME	DATE	<div>DESCRIPTION:</div> <div>CONTROL PANEL ASSEMBLY C1M1</div>	<div> TM</div>		
	KM 4-40/48		Wednesday, September 23, 2020 3:09:21 PM		DWG. NO. KMI1173		
	MATERIAL				PART NO. KMI1272-1		
					NOT TO SCALE		SHEET 7 OF 14

PRESSURE SWITCH, BLOWER DELAY/CYCLE MODULE, 12V SPARKER

ITEM NO.	PART NUMBER	DESCRIPTION	QTY.
17	1133072	#8 SAE FLAT WASHER	6
25	1128879	8-32 X1/2" PHIL PAN HEAD M/S	6
28	1133612	#8 SPLIT LOCK WASHER	6
31	1136024	#8-32 MACHINE SCREW NUT	6
46	114029-10	SPDT AIR PRESSURE SWITCH (KM IR STD)	1
47	BD/CM	BLOWER DELAY/CYCLE MODULE	1
50	2010-12	12 V AUTOMATIC SPARKER (POTTED) FOR INFRAREDS	1
70	69917	1/8" HOSE BARB X 1/8" MNPT	1
71	69866	1/8" X 1 1/2" BRASS NIPPLE	1
73	5187K61	1/8" I.D. GENERAL PURPOSE HOSE; TYGON	1
74	NEEC500	3/8" x 1/2" KO BOX CONNECTOR, 2 SCREW ROMEX CLAMP	1



PROPRIETARY AND CONFIDENTIAL

THE INFORMATION CONTAINED IN THIS DRAWING IS THE SOLE PROPERTY OF KEIZER MORRIS INTERNATIONAL. ANY REPRODUCTION IN PART OR AS A WHOLE WITHOUT THE WRITTEN PERMISSION OF KEIZER MORRIS INTERNATIONAL IS PROHIBITED.

PROJECT

KM 4-40/48

NAME

DATE

Wednesday,
September 23,
2020 3:09:21 PM

DESCRIPTION:

CONTROL PANEL ASSEMBLY C1M1

MATERIAL



TM

DWG. NO. KM1173

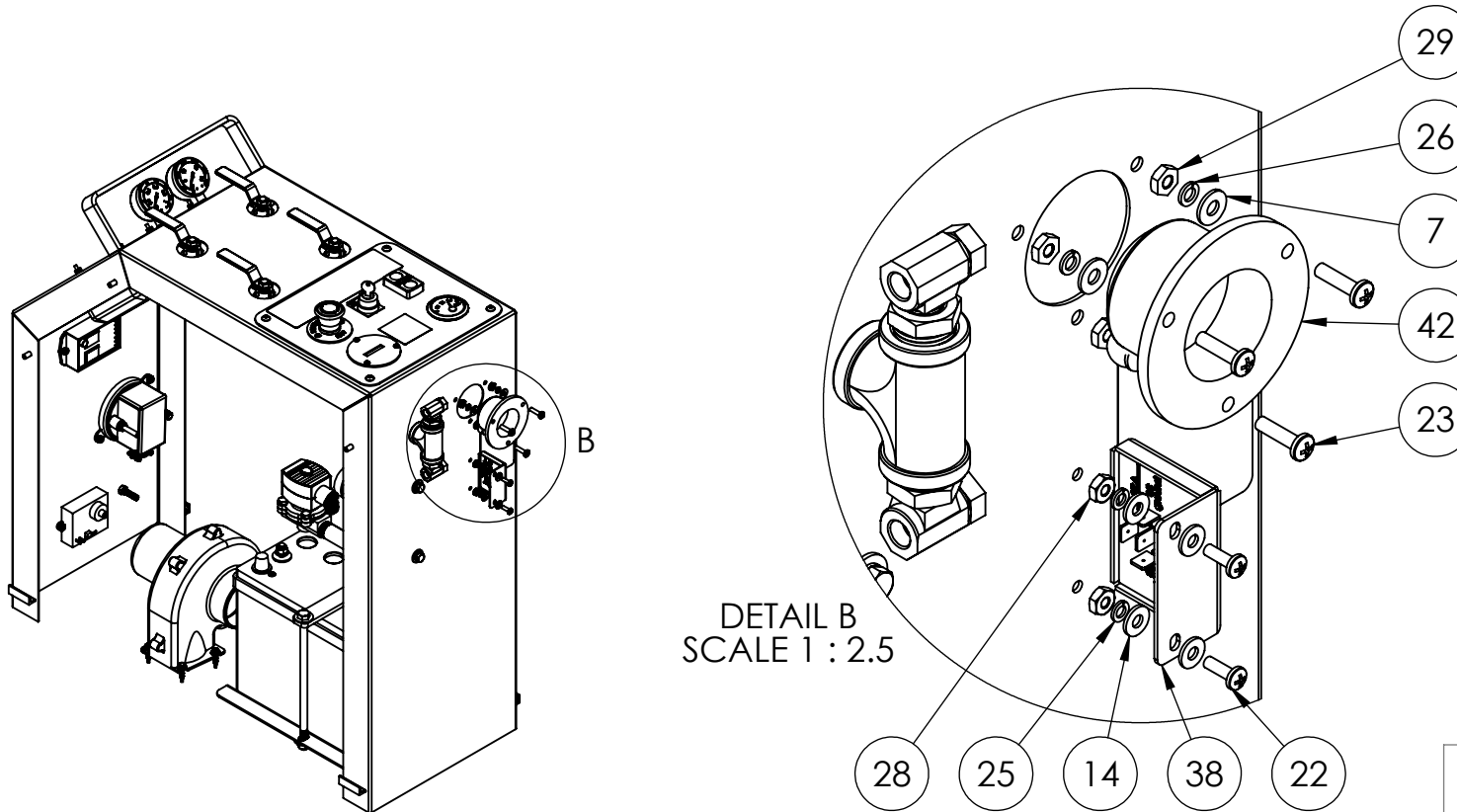
PART NO. KM1272-1

NOT TO SCALE

SHEET 8 OF 14

AC PORT, 10 MINUTE TIMER

ITEM NO.	PART NUMBER	DESCRIPTION	QTY.
7	1133074	#10 SAE FLAT WASHER	3
14	1133072	#8 SAE FLAT WASHER	4
22	1128879	8-32 X1/2" PHIL PAN HEAD M/S	2
23	1129061	10-32 x 3/4" PHIL PAN HEAD M/S	3
25	1133612	#8 SPLIT LOCK WASHER	2
26	1133614	#10 SPLIT LOCK WASHER	3
28	1136024	#8-32 MACHINE SCREW NUT	2
29	1136030	#10-32 MACHINE SCREW NUT	3
38	VCM-05-10MF	ONE-SHOT TIMER RELAY, 10 MINUTES	1
42	GCP1	AC PORT PLUG; GENIUS, BLACK 13 AMP, 12V AC	1



PROPRIETARY AND CONFIDENTIAL
THE INFORMATION CONTAINED IN THIS DRAWING IS THE SOLE PROPERTY OF KEIZER MORRIS INTERNATIONAL. ANY REPRODUCTION IN PART OR AS A WHOLE WITHOUT THE WRITTEN PERMISSION OF KEIZER MORRIS INTERNATIONAL IS PROHIBITED.

PROJECT	NAME	DATE
KM 4-40/48		Wednesday, September 23, 2020 3:09:21 PM
MATERIAL		

DESCRIPTION:
CONTROL PANEL ASSEMBLY C1M1



TM

DWG. NO. KMI1173

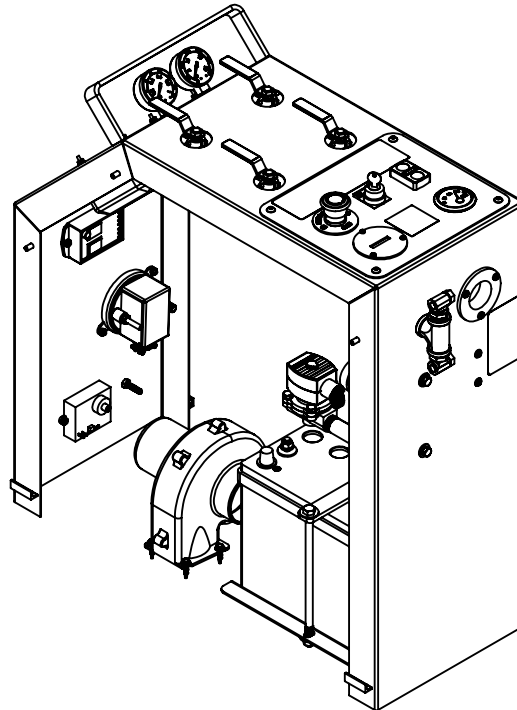
PART NO. KMI1272-1

NOT TO SCALE

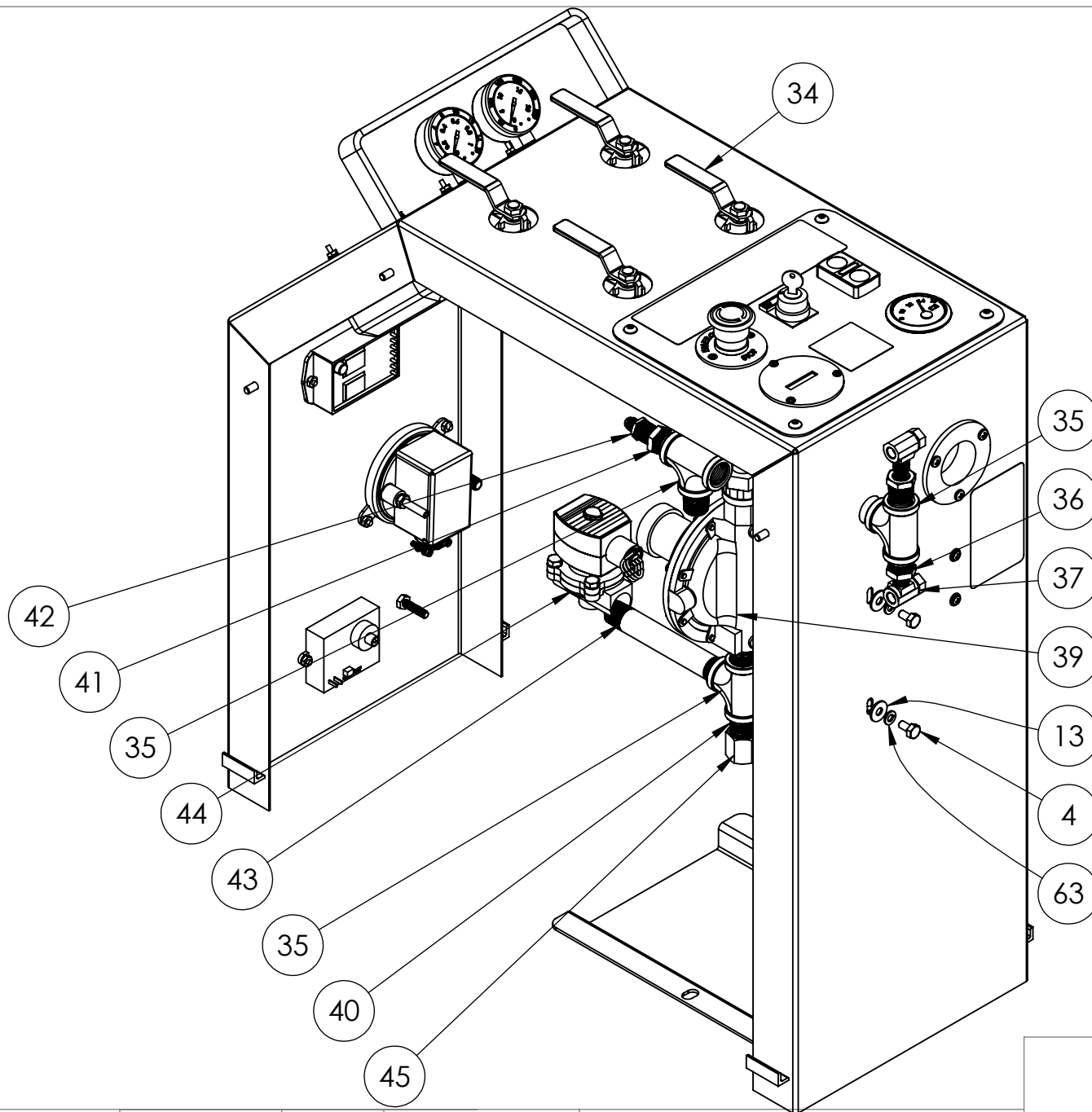
SHEET 9 OF 14

CONTROL PANEL PLUMBING

ITEM NO.	PART NUMBER	DESCRIPTION	QTY.
4	110120300	1/4- 20 x 1/2" HEX CAP SCREW GR 5	2
13	1133004	1/4" USS FLAT WASHER	2
34	BV2103-C	3/8" FULL PORT BALL VALVE	4
35	66313	1/2" BLACK MALL TEE	3
36	66288	1/2" x 1/4" BLACK HEX BUSHING	2
37	PN 2000	1/4" INVFL X 1/4" MPT BRASS TEE 2 PIECE WITH CHECK	2
39	LV4403 TR4	FIRST STAGE HIGH PRESSURE REGULATOR, REGO (4-40/4-48)	1
40	4666430	1/2" X CLOSE BLACK STEEL NIPPLE	3
41	66289	1/2" X 3/8" BLACK HEX BUSHING	1
42	48-4C	1/4" X 3/8" MNPT MALE CONNECTOR	1
43	4666525	1/2" X 5 1/2" BLACK STEEL NIPPLE	1
44	8210G002-12/VDC	1/2" SOLENOID VALVE, ASCO 12VDC	1
45	11898-01898	1/2" BLACK MALL HEX CAP	1
63	1133618	1/4" SPLIT LOCK WASHER	2



<div>PROPRIETARY AND CONFIDENTIAL</div> <div>THE INFORMATION CONTAINED IN THIS DRAWING IS THE SOLE PROPERTY OF KEIZER MORRIS INTERNATIONAL. ANY REPRODUCTION IN PART OR AS A WHOLE WITHOUT THE WRITTEN PERMISSION OF KEIZER MORRIS INTERNATIONAL IS PROHIBITED.</div>	PROJECT	NAME	DATE	<div>DESCRIPTION:</div> <div>CONTROL PANEL ASSEMBLY C1M1</div>	<div><div><div><div></div></div><div>INTERNATIONAL</div></div><div>TM</div></div>
	KM 4-40/48		Wednesday, September 23, 2020 3:09:21 PM		
	MATERIAL				
<div>DWG. NO. KMI1173</div> <div>PART NO. KMI1272-1</div> <div>NOT TO SCALE</div>					<div>SHEET 10 OF 14</div>



PROPRIETARY AND CONFIDENTIAL

THE INFORMATION CONTAINED IN THIS DRAWING IS THE SOLE PROPERTY OF KEIZER MORRIS INTERNATIONAL. ANY REPRODUCTION IN PART OR AS A WHOLE WITHOUT THE WRITTEN PERMISSION OF KEIZER MORRIS INTERNATIONAL IS PROHIBITED.

PROJECT	NAME	DATE
KM 4-40/48		Wednesday, September 23, 2020 3:09:21 PM
MATERIAL		

DESCRIPTION:

CONTROL PANEL ASSEMBLY C1M1



TM

DWG. NO. KMI1173

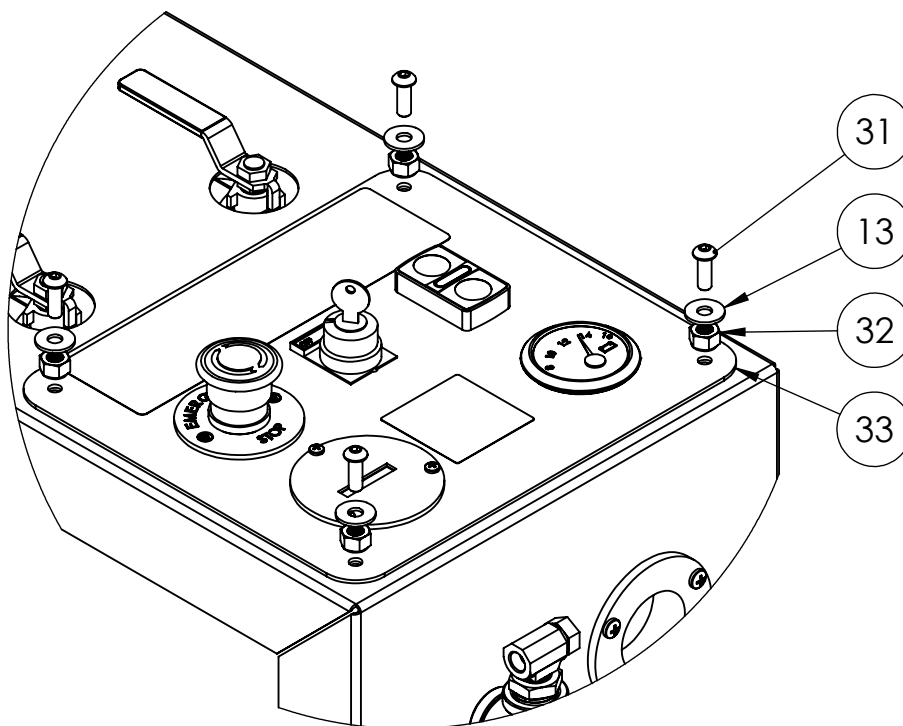
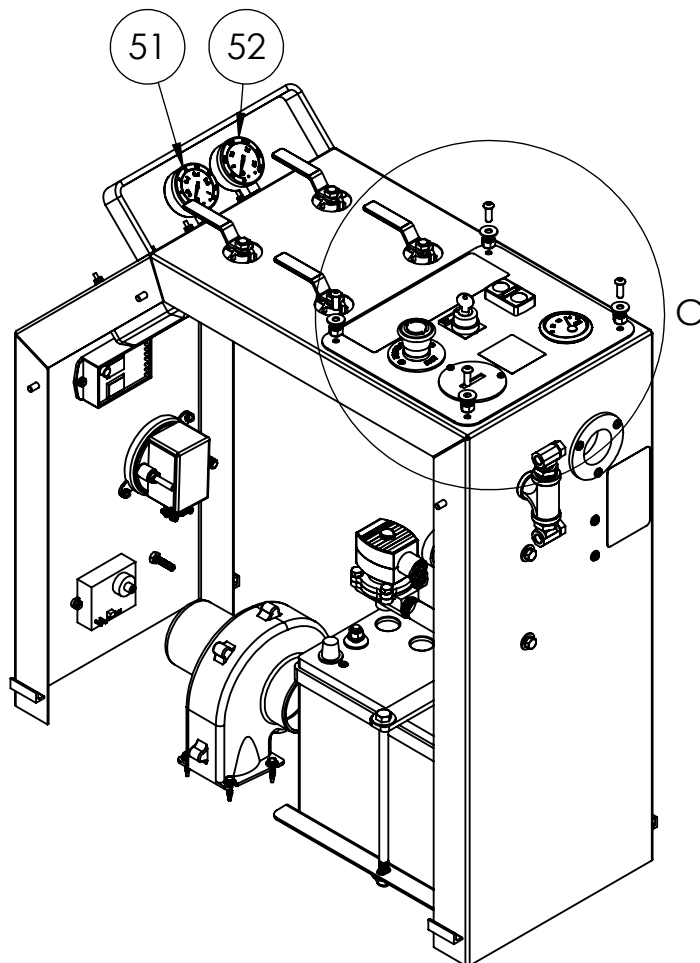
PART NO. KMI1272-1

NOT TO SCALE

SHEET 11 OF 14

CONTROL PANEL FACE PLATE

ITEM NO.	PART NUMBER	DESCRIPTION	QTY.
13	1133004	1/4" USS FLAT WASHER	6
31	1173754	1/4"-20 X 3/4" (ALLEN HEAD) BUTTON SOCKET CAP SCREW 18-8 SS	4
32	1137018	1/4- 20 NYLON INSERT LOCK NUT GR2	4
33	SPAHB	SWITCH PANEL ASSEMBLY AND HARNESS "BRAIDED"	1
51	SE-101D-204B	0-15 PSI BOTTOM MOUNT GAUGE (1/4" NPT)	1
52	SE-101D-204H	0-300 PSI BOTTOM MOUNT GAUGE (1/4" NPT)	1



DETAIL C
SCALE 2 : 7

PROPRIETARY AND CONFIDENTIAL

THE INFORMATION CONTAINED IN THIS DRAWING IS THE SOLE PROPERTY OF KEIZER MORRIS INTERNATIONAL. ANY REPRODUCTION IN PART OR AS A WHOLE WITHOUT THE WRITTEN PERMISSION OF KEIZER MORRIS INTERNATIONAL IS PROHIBITED.

PROJECT

KM 4-40/48

NAME

DATE

Wednesday,
September 23,
2020 3:09:21 PM

MATERIAL

DESCRIPTION:

CONTROL PANEL ASSEMBLY C1M1



TM

DWG. NO. KMI1173

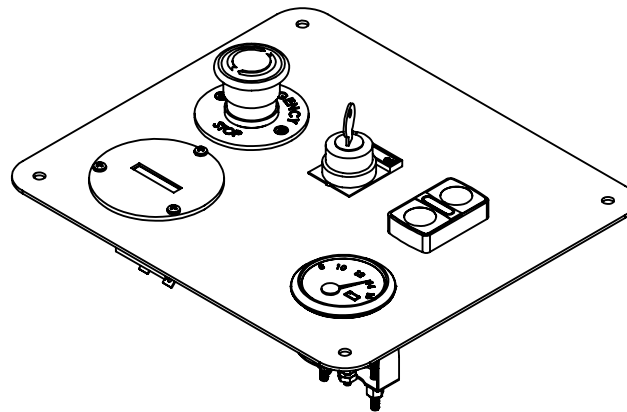
PART NO. KMI1272-1


NOT TO SCALE

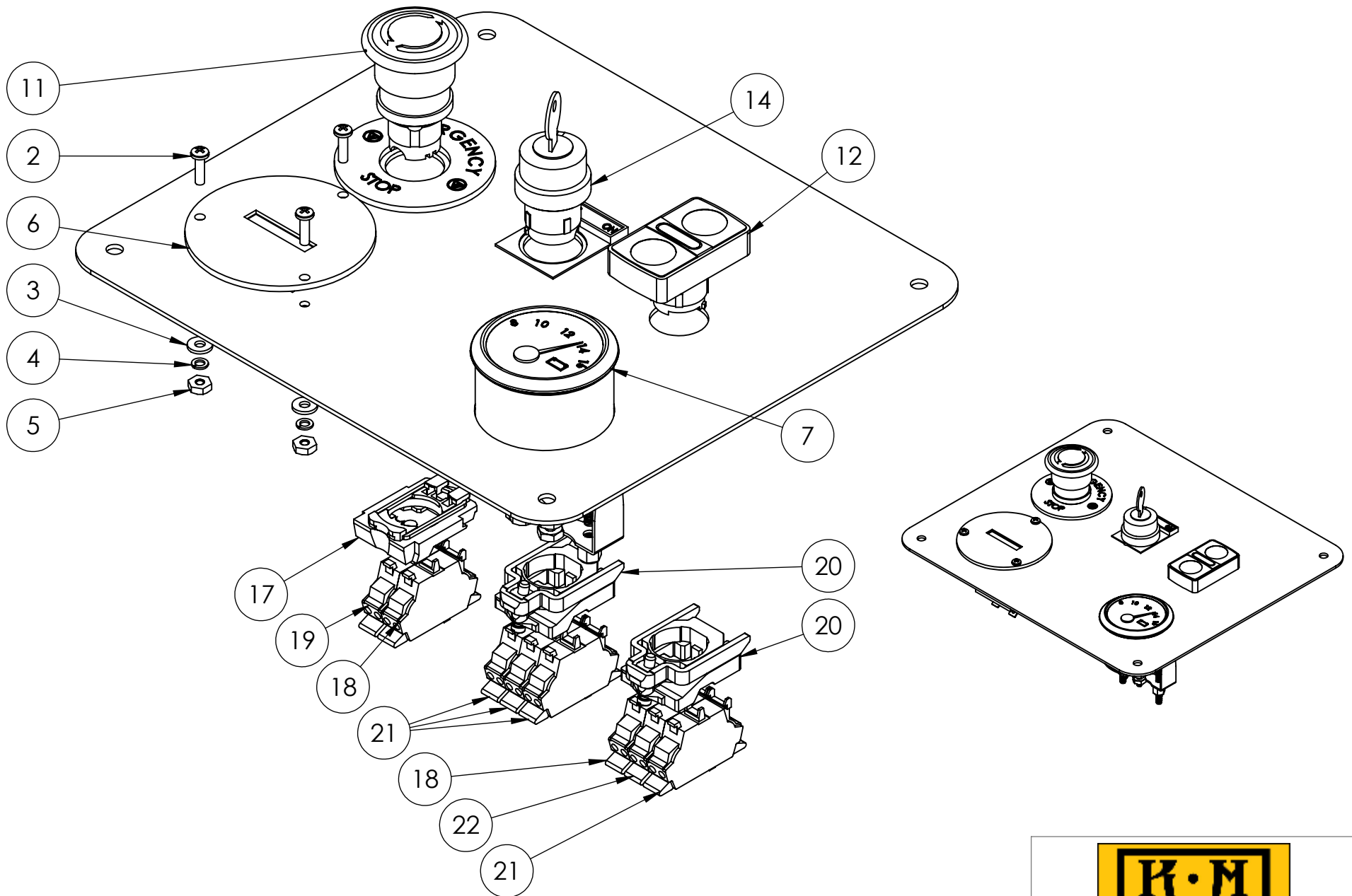
SHEET 12 OF 14

SWITCH PANEL ASSEMBLY

ITEM NO.	PART NUMBER	DESCRIPTION	QTY.
2	1128804	6-32 X 1/2" PHIL PAN HEAD M/S	3
3	1133070	#6 SAE FLAT WASHER	3
4	1133610	#6 SPLIT LOCK WASHER	3
5	1136020	#6-32 MACHINE SCREW NUT	3
6	T14B517BC	HOUR METER, QUARTZ, 8-32 V	1
7	VDO 332-901	VDO 12V COCKPIT VOLTMETER, 8-16 V, 2 1/6" DIAMETER, SHORT SWEEP	1
11	ZB5 AW743	E STOP HEAD, ILLUM, PLASTIC, TWIST TO RELEASE, 40MM HEAD, 22MM MOUNT	1
12	ZB4 BW7A3741	START/STOP W/ PILOT LIGHT HEAD, METAL, 22MM	1
14	ZB4 BG2	KEYED SWITCH HEAD, METAL, 22MM	1
17	ZB5AZ009	BODY FIXING COLLAR FOR ELECTRICAL BLOCK, PLASTIC	1
18	ZBE-1025	NC CONTACT BLOCK FOR 22M HEAD, SPRING CLAMP TERMS-SCHNEIDER	2
19	ZBVB45	RED ILLUMINATED LED BLOCK FOR 22MM HEAD, 24V, SPRING CLAMP TERMS..	1
20	ZB4BZ009	BODY FIXING COLLAR FOR ELECTRICAL BLOCK, METAL	2
21	ZBE-1015	NO CONTACT BLOCK FOR 22MM HEAD, SPRING CLAMP TERMS..	4
22	ZBVB15	WHITE ILLUMINATED LED BLOCK FOR 22MM HEAD, 24V, SPRING CLAMP TERMS..	1



PROPRIETARY AND CONFIDENTIAL THE INFORMATION CONTAINED IN THIS DRAWING IS THE SOLE PROPERTY OF KEIZER MORRIS INTERNATIONAL. ANY REPRODUCTION IN PART OR AS A WHOLE WITHOUT THE WRITTEN PERMISSION OF KEIZER MORRIS INTERNATIONAL IS PROHIBITED.	PROJECT	NAME	DATE	DESCRIPTION: SWITCH PANEL ASSEMBLY AND HARNESS "BRAIDED"	<div style="text-align: center;">  TM </div>
	KM 4-40/48	DANIEL F.	Wednesday, September 23, 2020 3:09:20 PM		
	MATERIAL				
					DWG. NO. PART NO. SPAHB NOT TO SCALE



PROPRIETARY AND CONFIDENTIAL

THE INFORMATION CONTAINED IN THIS DRAWING IS THE SOLE PROPERTY OF KEIZER MORRIS INTERNATIONAL. ANY REPRODUCTION IN PART OR AS A WHOLE WITHOUT THE WRITTEN PERMISSION OF KEIZER MORRIS INTERNATIONAL IS PROHIBITED.

PROJECT	NAME	DATE
KM 4-40/48	DANIEL F.	Wednesday, September 23, 2020 3:09:20 PM
MATERIAL		

DESCRIPTION:

SWITCH PANEL ASSEMBLY AND HARNESS
"BRAIDED"



TM

DWG. NO.

PART NO. SPAHB

NOT TO SCALE

SHEET 14 OF 14