

PROPRIETARY AND CONFIDENTIAL
 THE INFORMATION CONTAINED IN THIS DRAWING IS THE SOLE PROPERTY OF KEIZER MORRIS INTERNATIONAL. ANY REPRODUCTION IN PART OR AS A WHOLE WITHOUT THE WRITTEN PERMISSION OF KEIZER MORRIS INTERNATIONAL IS PROHIBITED.

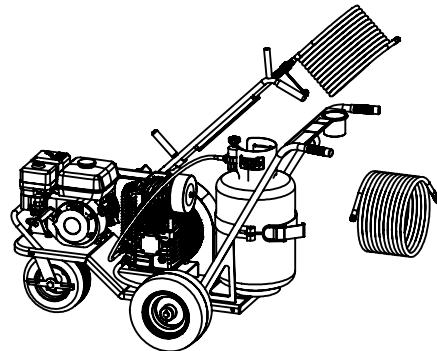
PROJECT	NAME	DATE
KM CRACK JET II	Gary R.	Wednesday, November 4, 2020 3:39:57 PM
MATERIAL		

DESCRIPTION:
CRACK JET II ASSEMBLY PARTS BREAKDOWN



DWG. NO. **CRACK JET II ASSEMBLY**
 PART NO. **CRACK JET II ASSEMBLY**
 NOT TO SCALE | SHEET 3 OF 5

ITEM NO.	PART NUMBER	DESCRIPTION	QTY.
32	K-17	K_17 COMPRESSOR WITH 12 1/2" FLYWHEEL_AIR FILTER ASSEMBLY	1
33	GCUP-104	CUP HOLDER-ALUMINUM-BLACK	1
40	5UHD6	4 3/4" OD SHEAVE ONE GROOVE, 4" PD	1
41	5UJA2	H 3/4" BUSHING SPLIT TAPER FOR PULLEY	1
42	656640	GX160 HONDA ENGINE 5.5 HP	1
43	9282K19	RUBBER GRIP CRACK JET	2
46	67CH-742	REGULATOR W/HANDWHEEL 1/4"FPT 30-60 PSI	1
52	356DC-4-SWL-31	410/350-6, 12 1/2" PNEUMATIC TIRE AND WHEEL	2
53	100CS354FP	10" PNEUMATIC TIRE SWIVEL CASTER WITH SIDE BRAKE	1
55	KMI2042-0	TOW BAR ASSEMBLY	1
57	KMI1023-0	COMPLETE WAND ASSEMBLY	1
59	KMI3079-0	3/8" LP HOSE ASSEMBLY 36', CJII	1
61	FS10052	AIR FILTER ASSEMBLY 1/2" METAL W/ELEMENT 4" DIA.	1
66	A51	V-BELT 53"	1
67	KMI3083-0	3/8" LP HOSE ASSEMBLY 50', CJII	1
70	2712T45.063	FLOW CONTROL ORFICE 1/4" NPT MALE X FEMALE .063 DIA	1
71	5A708	AIR PRESSURE RELIEF VALVE	1
83	433	AIR FILTER ELEMENT 4" CANISTER	1
77	KMI3082-0	1/4" LP HOSE ASSEMBLY 36", CJ II REGULATOR TO TEE	1
78	0701890	1/2" EMT MEDIUM DUTY 1 HOLE CONDUIT STRAP	3



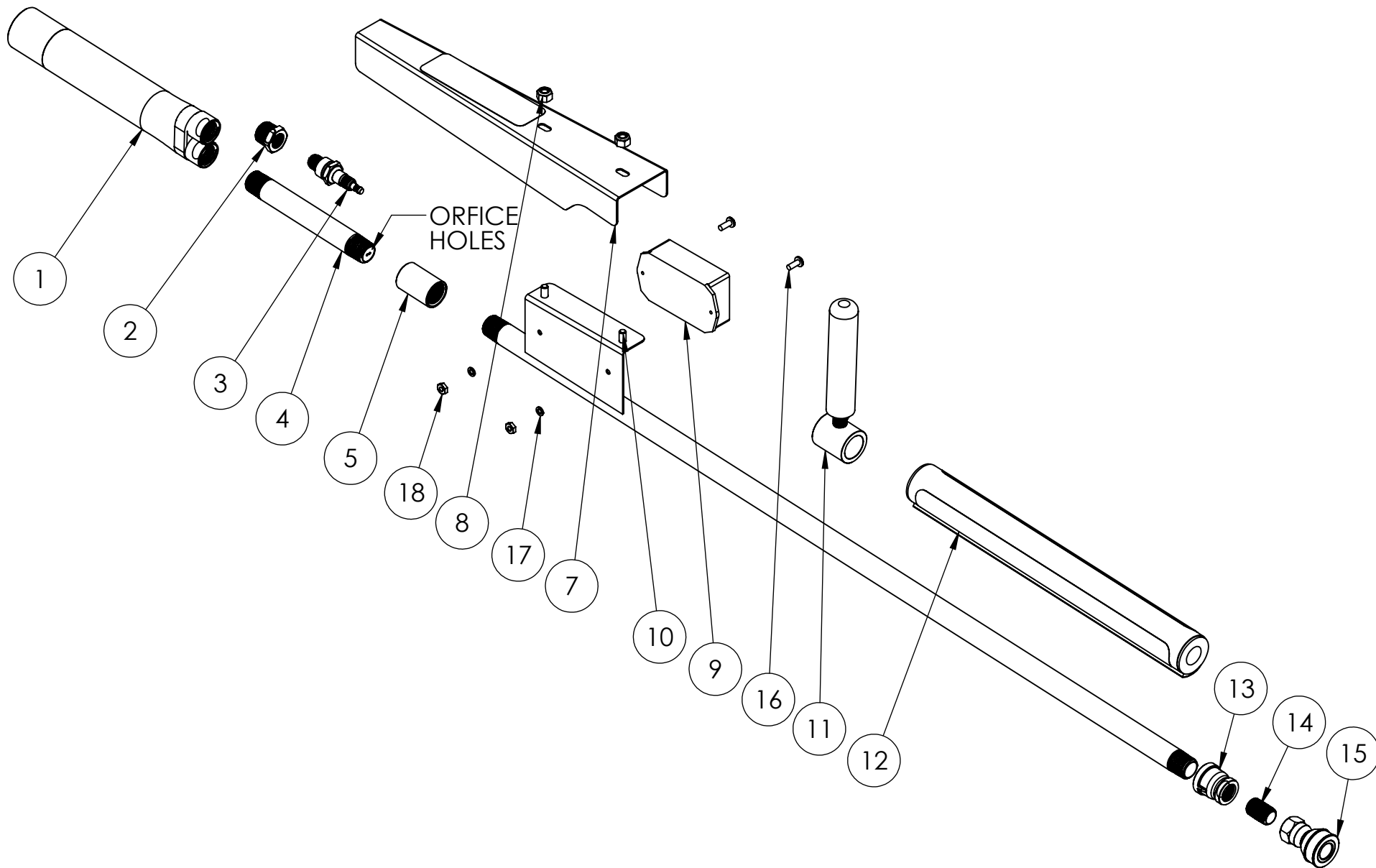
PROPRIETARY AND CONFIDENTIAL THE INFORMATION CONTAINED IN THIS DRAWING IS THE SOLE PROPERTY OF KEIZER MORRIS INTERNATIONAL. ANY REPRODUCTION IN PART OR AS A WHOLE WITHOUT THE WRITTEN PERMISSION OF KEIZER MORRIS INTERNATIONAL IS PROHIBITED.	PROJECT	NAME	DATE	DESCRIPTION: CRACK JET II ASSEMBLY PARTS BREAKDOWN BOM
	KM CRACK JET II	Gary R.	Wednesday, November 4, 2020 3:39:57 PM	
	MATERIAL			



DWG. NO. CRACK JET II ASSEMBLY

PART NO. CRACK JET II ASSEMBLY

NOT TO SCALE | SHEET 4 OF 5



PROPRIETARY AND CONFIDENTIAL
 THE INFORMATION CONTAINED IN THIS DRAWING IS THE SOLE PROPERTY OF KEIZER MORRIS INTERNATIONAL. ANY REPRODUCTION IN PART OR AS A WHOLE WITHOUT THE WRITTEN PERMISSION OF KEIZER MORRIS INTERNATIONAL IS PROHIBITED.

PROJECT	NAME	DATE
CRACK JET	GARY R.	Monday, September 19, 2022 8:32:41 AM
MATERIAL		

DESCRIPTION:
 COMPLETE WAND ASSEMBLY

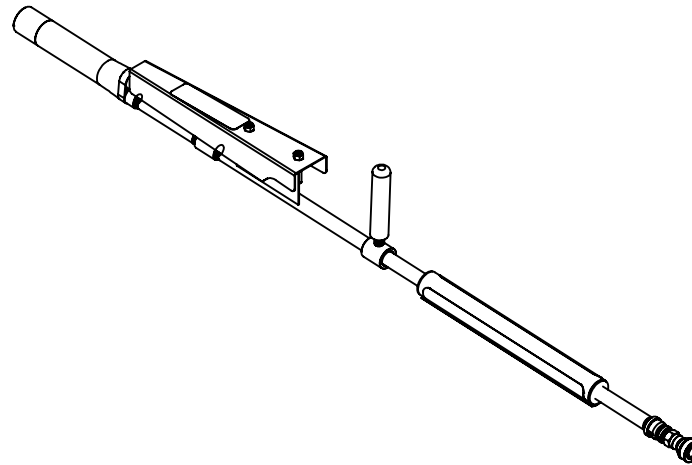


TM

DWG. NO. KMI0924
PART NO. KMI1023-0
NOT TO SCALE

WAND FOR CRACK JET II

ITEM NO.	PARTNO	DESCRIPTION	QTY.
1	KMI1412-0	S.S. BARREL ASSEMBLY FOR CRACK JET II	1
2	KMI1413-0	SPARK PLUG BUSHING FOR CJII BRASS	1
3	RN12YC	SPARK PLUG 404_CHAMPION (RN12YC)	1
4	KMI1418-0	STAINLESS MIXER NIPPLE	1
5	66273	1/2" STD STEEL BLACK COUPLING	1
7	KMI0255-2	CJ WAND COVER	1
8	1137018	1/4- 20 NYLON INSERT LOCK NUT GR2	2
9	800A0601	9V ELECTRONIC IGNITER PER KMI SPECIFICATION	1
10	110120300	1/4- 20 x 1/2" HEX CAP SCREW GR 5	2
11	KMI1408-0	ADJUSTABLE SLIDE HANDLE FOR CRACK JET	1
12	KMI2072-0	BLACK VINYL CRACKJET WAND COVER	1
13	66253	1/2" x 3/8 REDUCER COUPLING	1
14	4666420	3/8" x CLOSE BLACK STEEL NIPPLE	1
15	KMI2046-0	3/8" MPT x 3/8" FPT QUICK DISCONNECT LP OR NG (FEMALE SIDE)	1
16	1129049	10- 32 x 1/2" PHIL PAN HEAD M/S	2
17	1133614	#10 SPLIT LOCK WASHER	2
18	1136030	#10-32 MACHINE SCREW NUT	2



PROPRIETARY AND CONFIDENTIAL THE INFORMATION CONTAINED IN THIS DRAWING IS THE SOLE PROPERTY OF KEIZER MORRIS INTERNATIONAL. ANY REPRODUCTION IN PART OR AS A WHOLE WITHOUT THE WRITTEN PERMISSION OF KEIZER MORRIS INTERNATIONAL IS PROHIBITED.	PROJECT	NAME	DATE	DESCRIPTION: COMPLETE WAND ASSEMBLY	DWG. NO. KMI0924
	CRACK JET	GARY R.	Monday, September 19, 2022 8:32:41 AM		PART NO. KMI1023-0
	MATERIAL				NOT TO SCALE